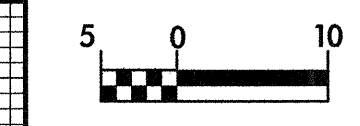


BM \*3 RR SPIKE IN BASE OF 450mm PINE  
7.513 RT OF -YI- STA.10+21.098 EL= 40.828

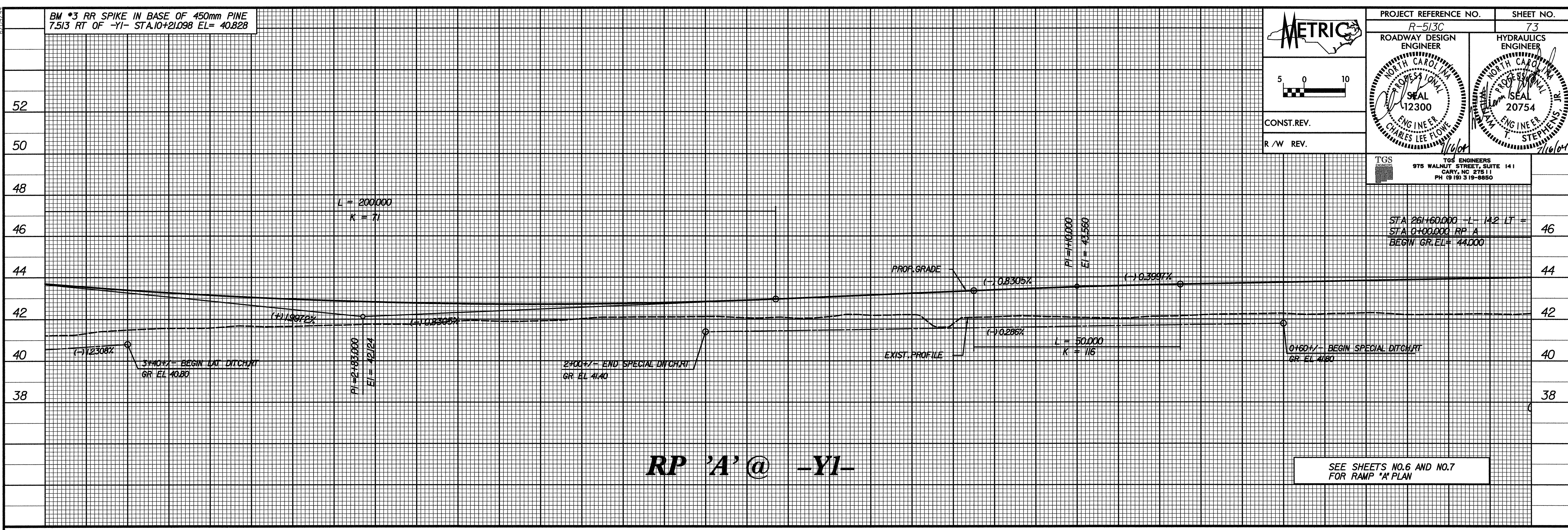


PROJECT REFERENCE NO. R-513C	SHEET NO. 73
ROADWAY DESIGN ENGINEER NORTH CAROLINA SEAL 12300 CHARLES LEE FLORE	HYDRAULICS ENGINEER NORTH CAROLINA SEAL 20754 STEPHENS
CONST. REV.	R/W REV.

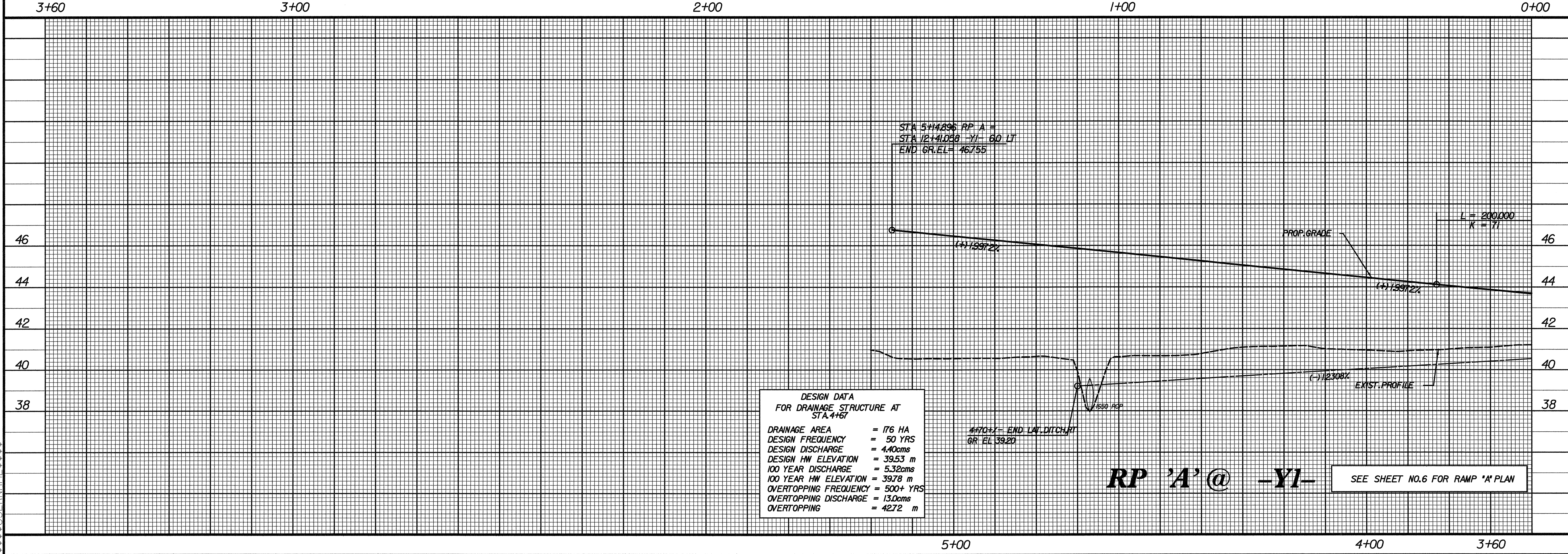


TGS  
TOS ENGINEERS  
975 WALNUT STREET, SUITE 141  
CARY, NC 27511  
PH (919) 319-8850

STA 26+60.000 -L- 14.2 LT =  
STA 0+00.000 RP A  
BEGIN GR. EL = 44.000



SEE SHEETS NO.6 AND NO.7  
FOR RAMP 'A' PLAN



DESIGN DATA  
FOR DRAINAGE STRUCTURE AT  
STA. 4+67

DRAINAGE AREA	= 176 HA
DESIGN FREQUENCY	= 50 YRS
DESIGN DISCHARGE	= 4.40cms
DESIGN HW ELEVATION	= 39.53 m
100 YEAR DISCHARGE	= 5.32cms
100 YEAR HW ELEVATION	= 39.78 m
OVERTOPPING FREQUENCY	= 500+ YRS
OVERTOPPING DISCHARGE	= 13.0cms
OVERTOPPING	= 4272 m

SEE SHEET NO.6 FOR RAMP 'A' PLAN

\$\$\$\$\$ SYSTEM\$\$\$\$\$  
\$\$\$\$\$ DGN\$\$\$\$\$  
\$\$\$\$\$ DRAWING\$\$\$\$\$