

BM *4 RR SPIKE IN BASE OF 750mm PINE
86.610 RT OF -L- STA.284+93.432 EL= 42.011

BM *4 RR SPIKE IN BASE OF 750mm PINE
86.610 RT OF -L- STA.284+93.432 EL= 42.011

METRIC

CONST. REV.
R / W REV.

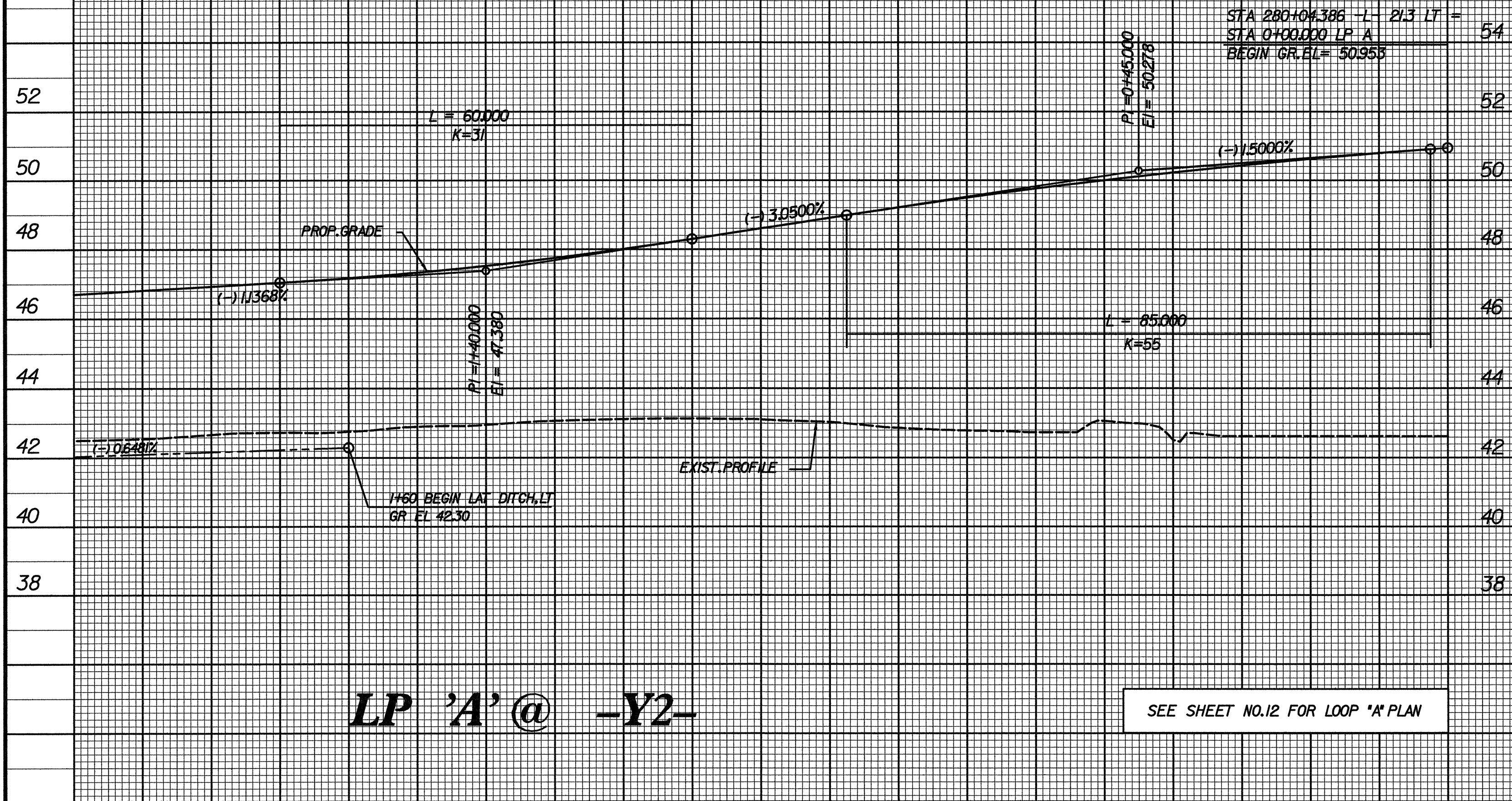
PROJECT REFERENCE NO. R-513C
ROADWAY DESIGN ENGINEER
HYDRAULICS ENGINEER

SHEET NO. 78

Professional Engineer Seal: NORTH CAROLINA PROFESSIONAL ENGINEERS BOARD, YEAR 12300, ENGINEER CHARLES LEE FLOWE, 7/10/04

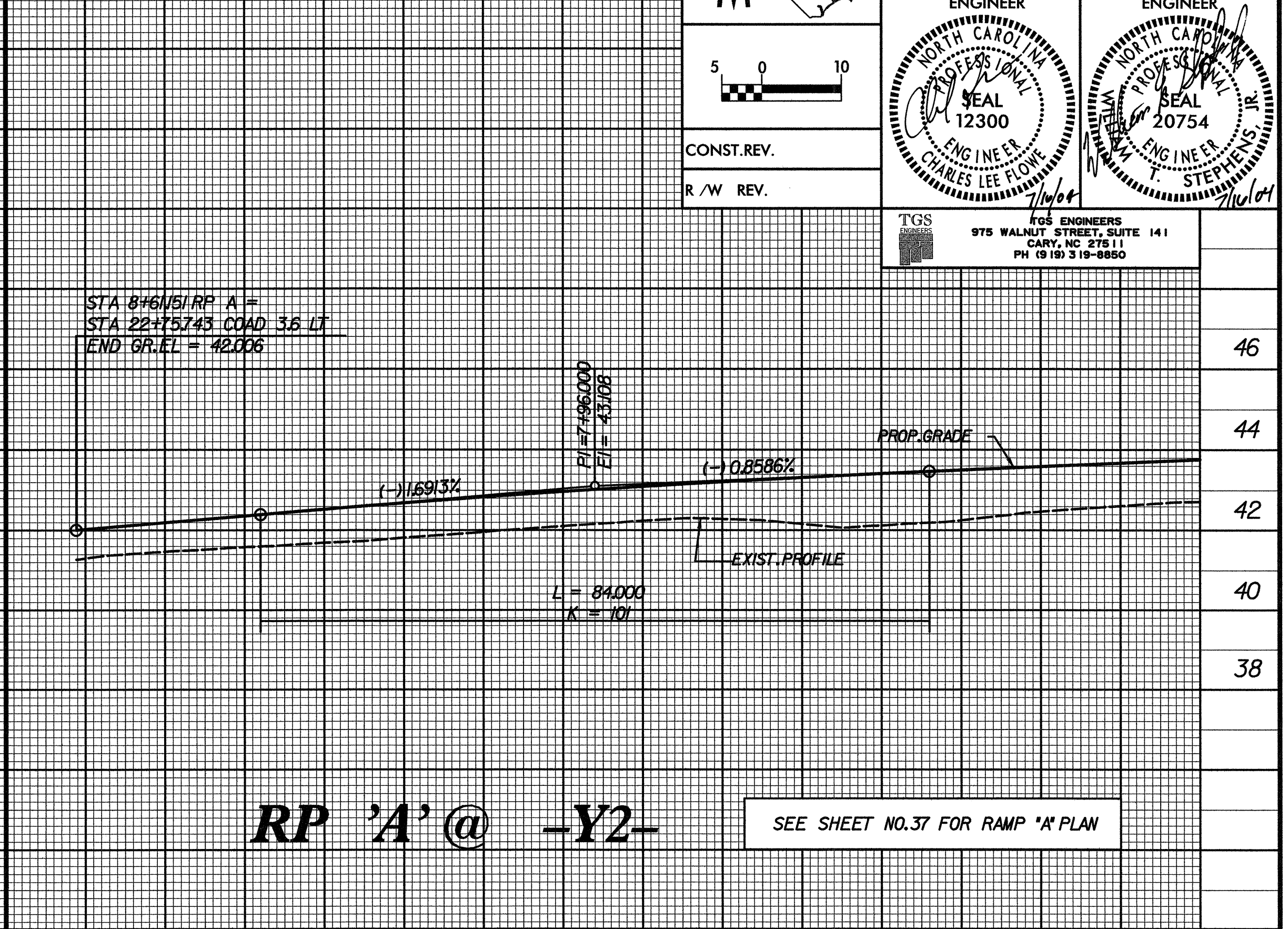
Professional Engineer Seal: NORTH CAROLINA PROFESSIONAL ENGINEERS BOARD, YEAR 20754, ENGINEER T. STEPHENS, 7/10/04

TGS ENGINEERS
975 WALNUT STREET, SUITE 141
CARY, NC 27511
PH (919) 319-8850



LP 'A' @ -Y2-

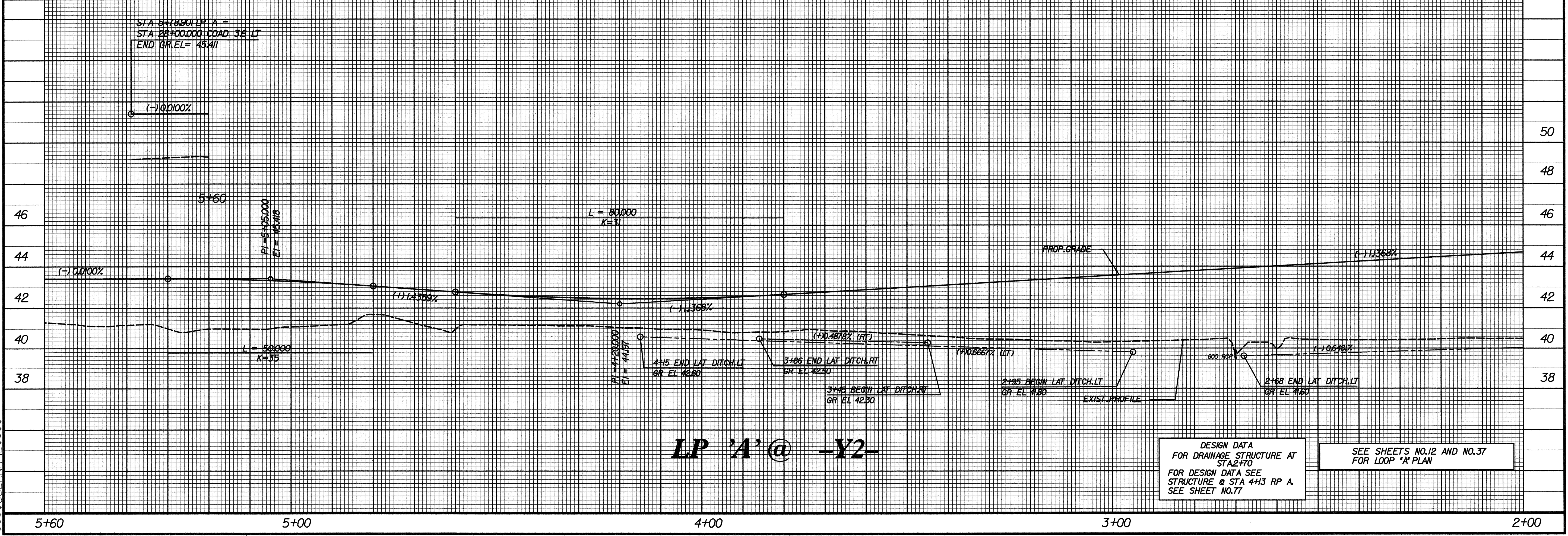
SEE SHEET NO.12 FOR LOOP 'A' PLAN



RP 'A' @ -Y2-

SEE SHEET NO.37 FOR RAMP 'A' PLAN

2+00 1+00 0+00 8+00 7+20



LP 'A' @ -Y2-

DESIGN DATA FOR DRAINAGE STRUCTURE AT STA 2+70 FOR DESIGN DATA SEE STRUCTURE @ STA 4+13 RP A. SEE SHEET NO.77

SEE SHEETS NO.12 AND NO.37 FOR LOOP 'A' PLAN

5+60 5+00 4+00 3+00 2+00

SYSTEMS DESIGN