

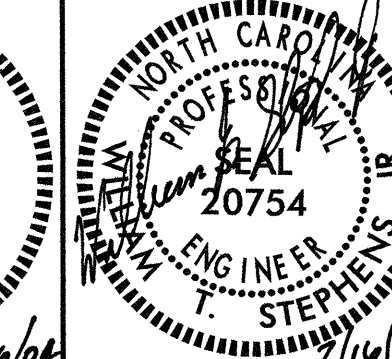
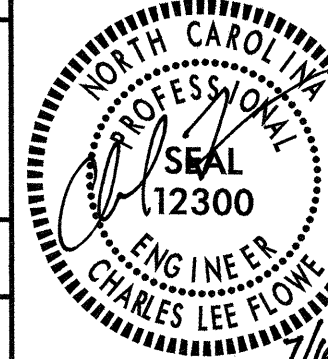
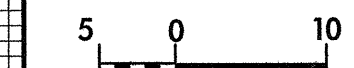
BM #4 RR SPIKE IN BASE OF 750mm PINE
86.610 RT OF -L- STA.284+93.432 EL= 42.011



PROJECT REFERENCE NO. R-513C SHEET NO. 79

ROADWAY DESIGN ENGINEER

HYDRAULICS ENGINEER

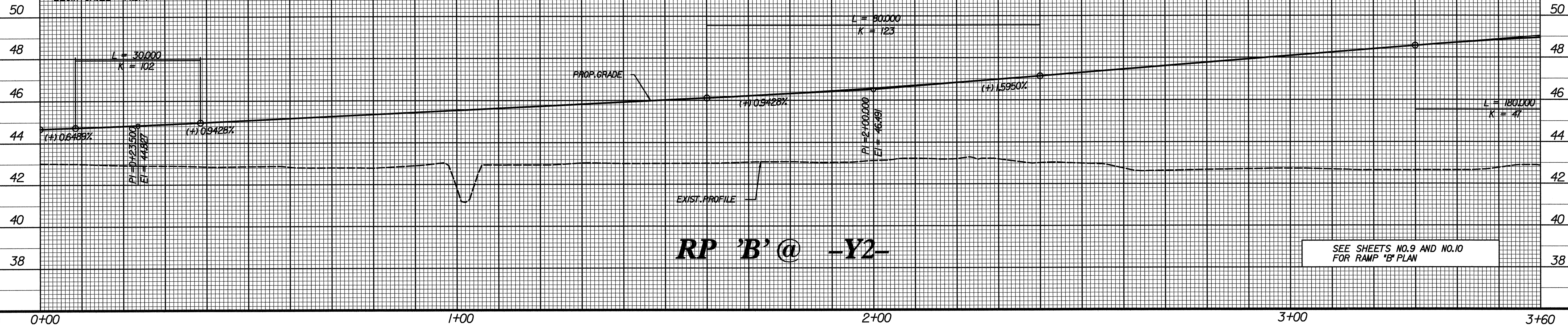


CONST. REV.

R / W REV.

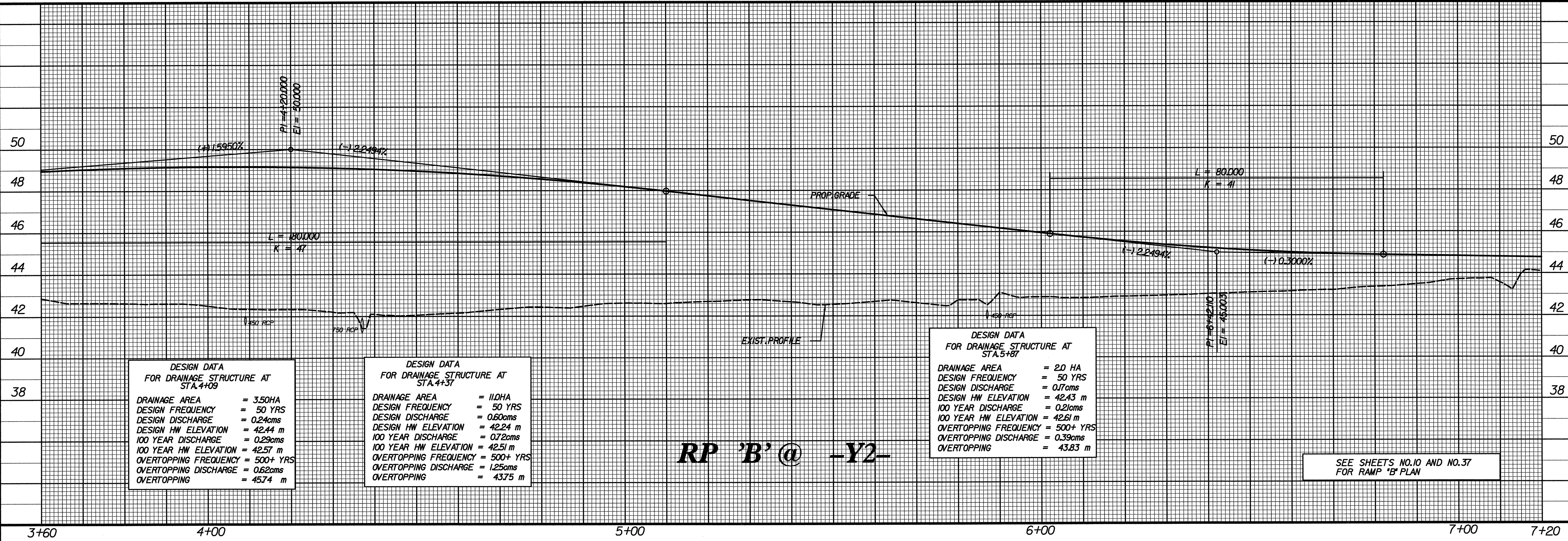
TGS ENGINEERS
975 WALNUT STREET, SUITE 141
CARY, NC 27511
PH (919) 319-8850

STA 271+71.988 -L- 17.7 UJ =
STA 0+00.000 RP B
BEGIN GR. EL= 44.674



RP 'B' @ -Y2-

SEE SHEETS NO.9 AND NO.10 FOR RAMP 'B' PLAN



RP 'B' @ -Y2-

SEE SHEETS NO.10 AND NO.37 FOR RAMP 'B' PLAN

DESIGN DATA FOR DRAINAGE STRUCTURE AT STA. 4+09

- DRAINAGE AREA = 3.50HA
- DESIGN FREQUENCY = 50 YRS
- DESIGN DISCHARGE = 0.24cms
- DESIGN HW ELEVATION = 42.44 m
- 100 YEAR DISCHARGE = 0.29cms
- 100 YEAR HW ELEVATION = 42.57 m
- OVERTOPPING FREQUENCY = 500+ YRS
- OVERTOPPING DISCHARGE = 0.62cms
- OVERTOPPING = 45.74 m

DESIGN DATA FOR DRAINAGE STRUCTURE AT STA. 4+37

- DRAINAGE AREA = 11.0HA
- DESIGN FREQUENCY = 50 YRS
- DESIGN DISCHARGE = 0.60cms
- DESIGN HW ELEVATION = 42.24 m
- 100 YEAR DISCHARGE = 0.72cms
- 100 YEAR HW ELEVATION = 42.51 m
- OVERTOPPING FREQUENCY = 500+ YRS
- OVERTOPPING DISCHARGE = 1.25cms
- OVERTOPPING = 43.75 m

DESIGN DATA FOR DRAINAGE STRUCTURE AT STA. 5+87

- DRAINAGE AREA = 2.0 HA
- DESIGN FREQUENCY = 50 YRS
- DESIGN DISCHARGE = 0.17cms
- DESIGN HW ELEVATION = 42.43 m
- 100 YEAR DISCHARGE = 0.21cms
- 100 YEAR HW ELEVATION = 42.61 m
- OVERTOPPING FREQUENCY = 500+ YRS
- OVERTOPPING DISCHARGE = 0.39cms
- OVERTOPPING = 43.83 m

07/14/04 10:54:22 AM
 I:\BES\WORK\95135-RP-P\071404_10:54:22 AM