

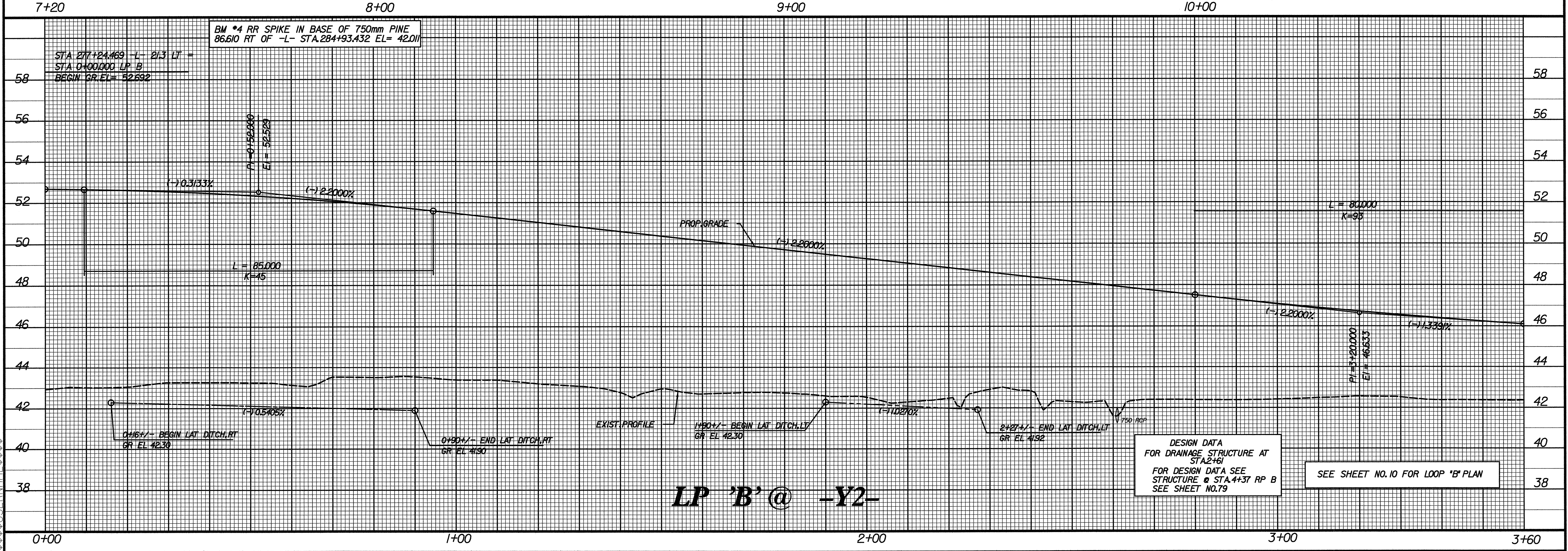
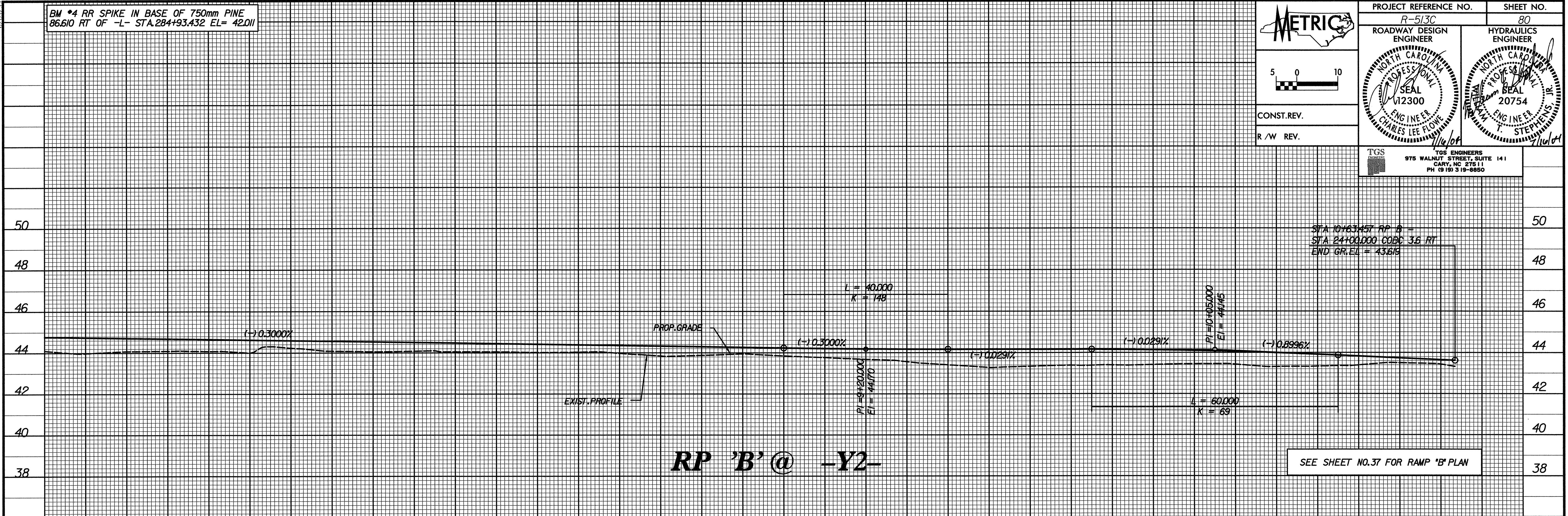
BM \*4 RR SPIKE IN BASE OF 750mm PINE  
86.610 RT OF -L- STA.284+93.432 EL= 42.011

**METRIC**

CONST. REV.  
R / W REV.

PROJECT REFERENCE NO. R-513C	SHEET NO. 80
ROADWAY DESIGN ENGINEER CHARLES LEE FLOWERS	HYDRAULICS ENGINEER T. STEPHENS

TGS ENGINEERS  
975 WALNUT STREET, SUITE 141  
CARY, NC 27511  
PH (919) 319-8850



SYSTEME 3D/CAD/US/FRANCE