
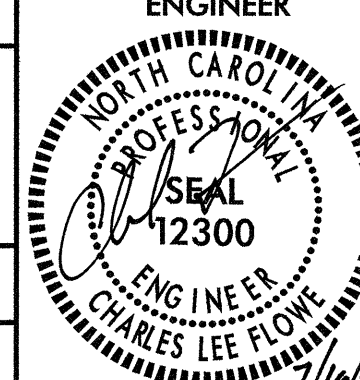
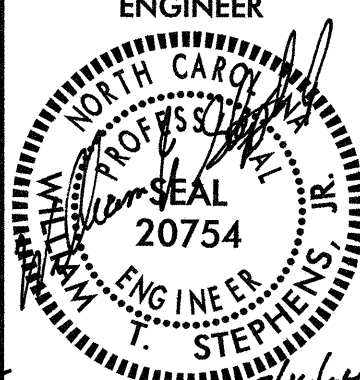
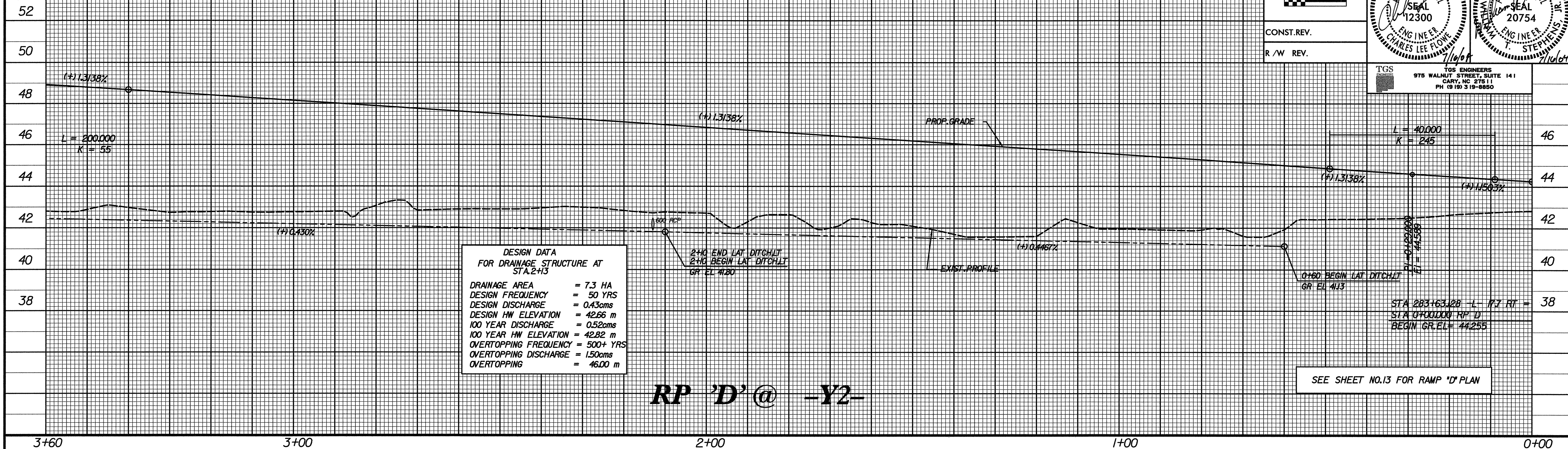


BM \*4 RR SPIKE IN BASE OF 750mm PINE  
86.610 RT OF -L- STA.284+93.432 EL= 42.011

|   |                                 |   |
|---|---------------------------------|---|
| <br>5 0 10<br>CONST. REV.<br>R/W REV. | PROJECT REFERENCE NO.<br>R-513C | SHEET NO.<br>83   |
|   | ROADWAY DESIGN ENGINEER         | HYDRAULICS ENGINEER   |
|                                      |                                 |  |
| TGS<br>TGS ENGINEERS<br>975 WALNUT STREET, SUITE 141<br>CARY, NC 27511<br>PH (919) 319-8850                             |                                 |   |

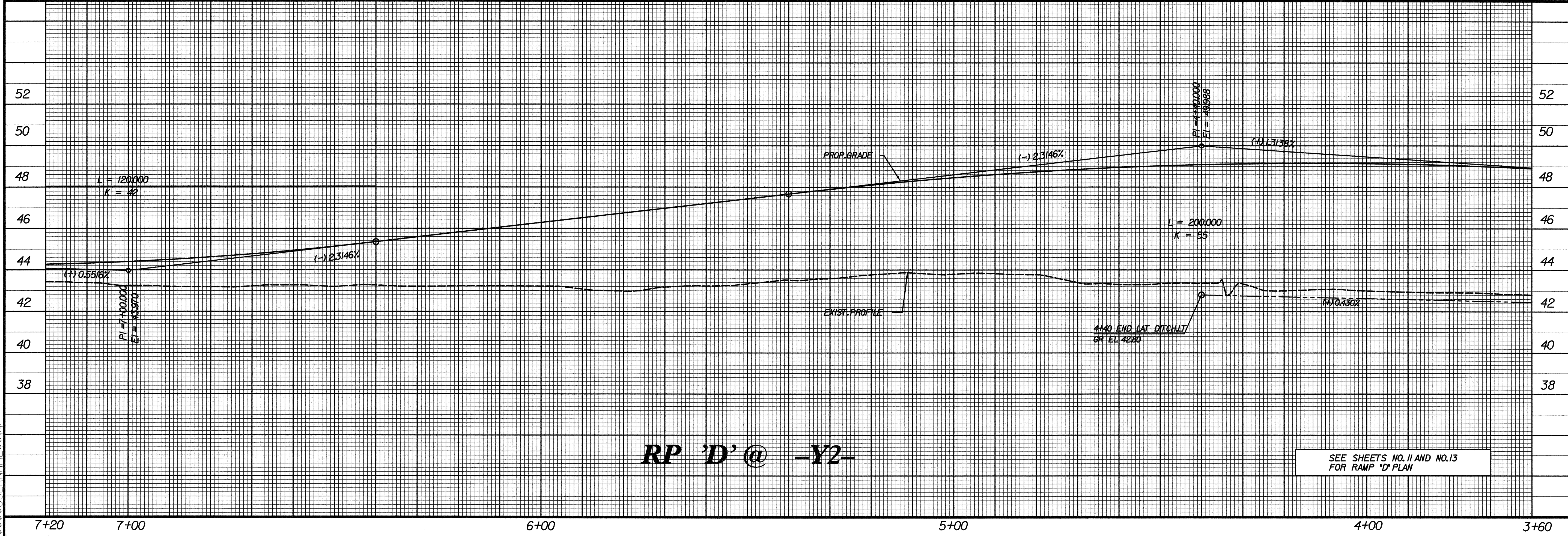


DESIGN DATA  
FOR DRAINAGE STRUCTURE AT  
STA.2+13

DRAINAGE AREA = 7.3 HA  
DESIGN FREQUENCY = 50 YRS  
DESIGN DISCHARGE = 0.43cms  
DESIGN HW ELEVATION = 42.66 m  
100 YEAR DISCHARGE = 0.52cms  
100 YEAR HW ELEVATION = 42.82 m  
OVERTOPPING FREQUENCY = 500+ YRS  
OVERTOPPING DISCHARGE = 1.50cms  
OVERTOPPING = 46.00 m

**RP 'D' @ -Y2-**

SEE SHEET NO.13 FOR RAMP 'D' PLAN



**RP 'D' @ -Y2-**

SEE SHEETS NO. 11 AND NO.13 FOR RAMP 'D' PLAN

\$\$\$ SYSTEM \$\$\$  
\$\$\$ DGN \$\$\$  
\$\$\$ US \$\$\$  
\$\$\$ REVISIONS \$\$\$