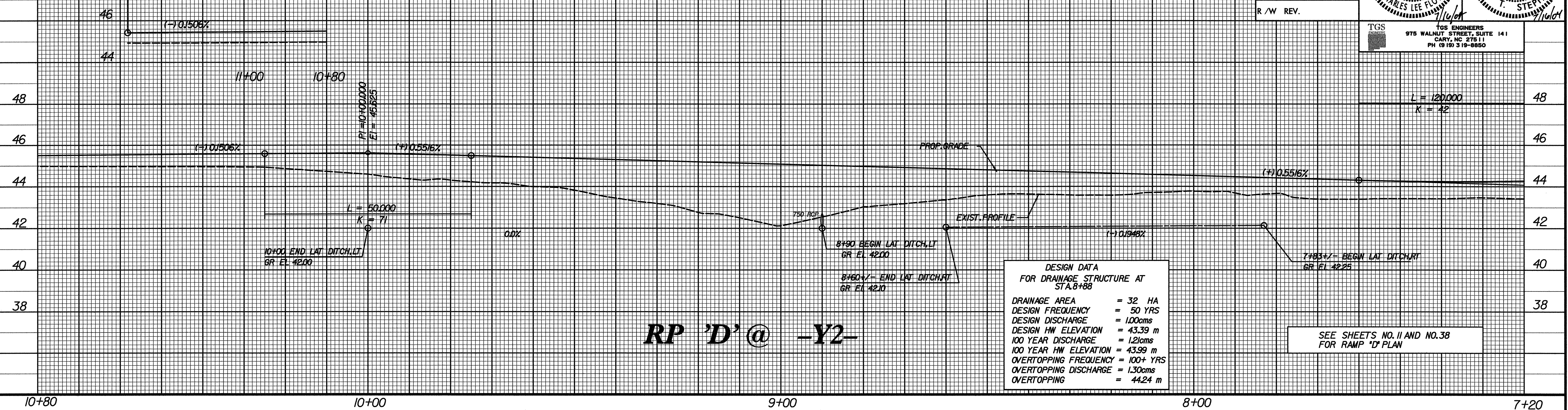


PROJECT REFERENCE NO. R-513C	SHEET NO. 84
ROADWAY DESIGN ENGINEER	HYDRAULICS ENGINEER
CONST. REV.	
R / W REV.	

TGS ENGINEERS  
975 WALNUT STREET, SUITE 141  
CARY, NC 27511  
PH (919) 319-8850

BM \*4 RR SPIKE IN BASE OF 750mm PINE  
86.610 RT OF -L- STA.284+93.432 EL= 42.011

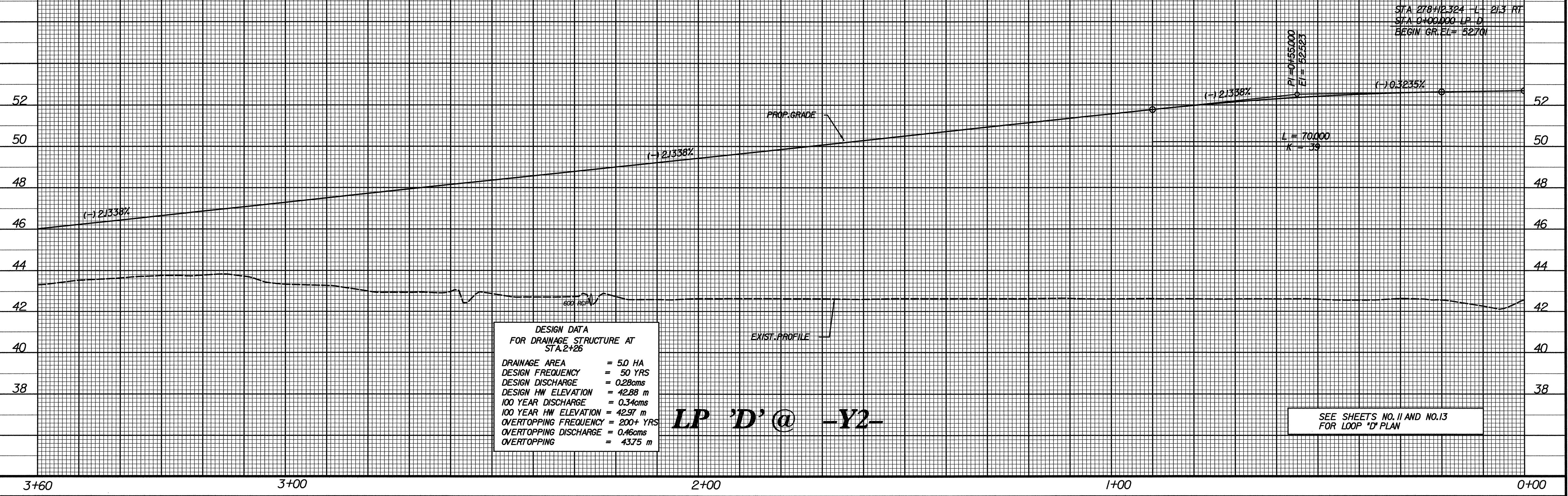
STA. 11+28.82 RP 'D'  
STA. 36+40.000 ROAD 3/4 LT  
END GR. EL = 45.432



**RP 'D' @ -Y2-**

BM \*4 RR SPIKE IN BASE OF 750mm PINE  
86.610 RT OF -L- STA.284+93.432 EL= 42.011

STA. 278+42.324 -L- 21.3 FT  
STA. 0+00.000 LP 'D'  
BEGIN GR. EL = 52.701



**LP 'D' @ -Y2-**

SYSTEM \$\$\$\$\$\$  
 TIME \$\$\$\$\$\$  
 DGN \$\$\$\$\$\$  
 USER \$\$\$\$\$\$