

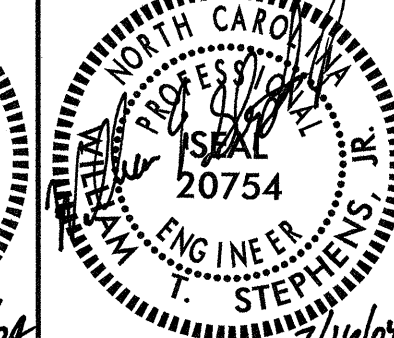
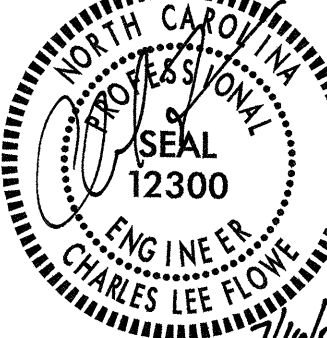
BM *4 RR SPIKE IN BASE OF 750mm PINE
86.610 RT OF -L- STA.284+93.432 EL= 42.011



PROJECT REFERENCE NO. R-513C SHEET NO. 92

ROADWAY DESIGN ENGINEER

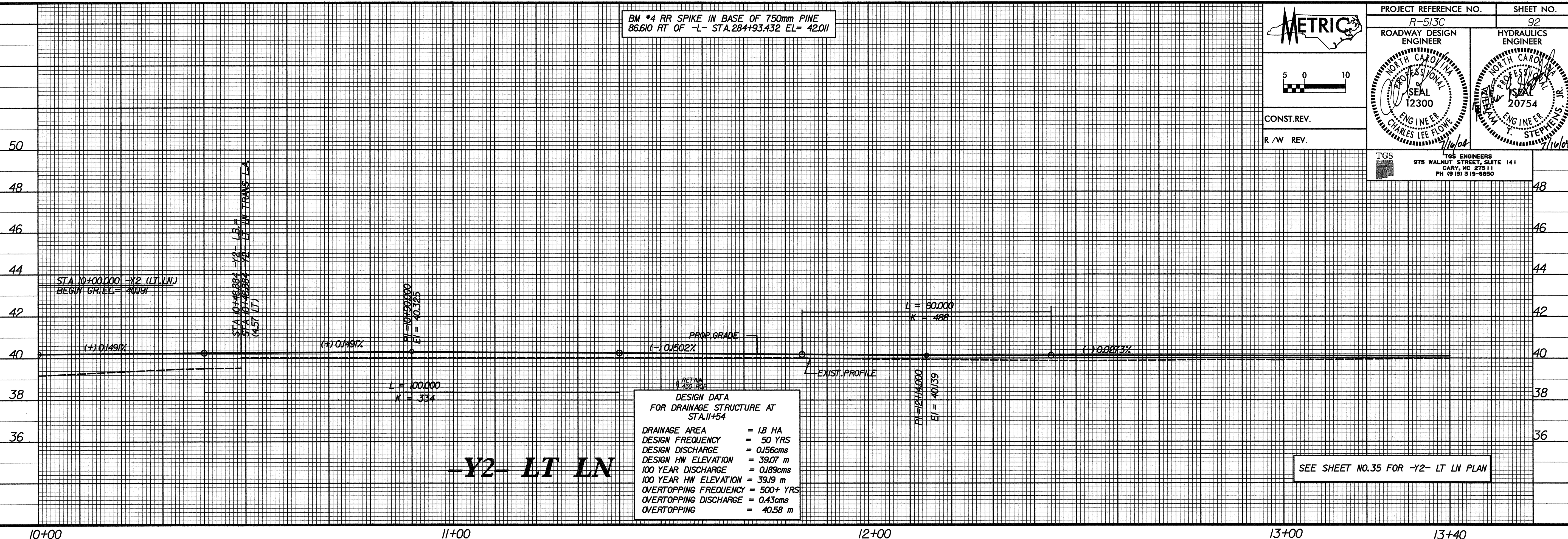
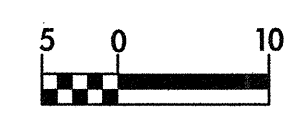
HYDRAULICS ENGINEER



CONST. REV.

R/W REV.

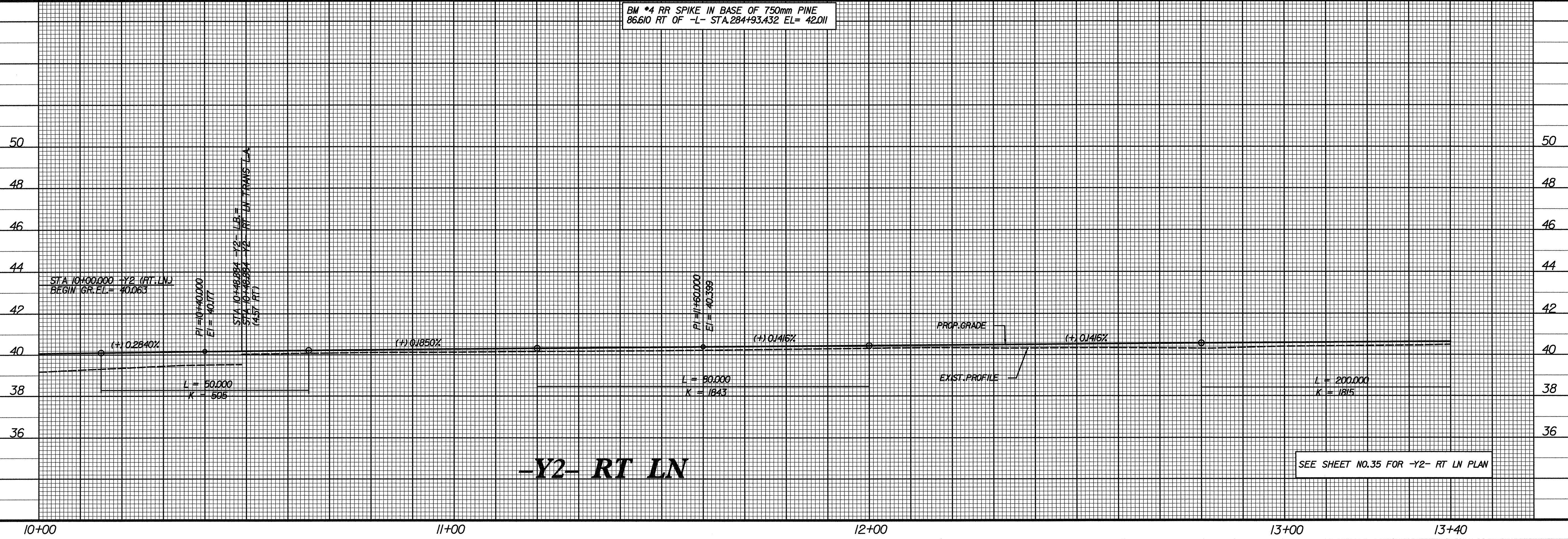
TGS ENGINEERS
975 WALNUT STREET, SUITE 141
CARY, NC 27511
PH (919) 319-8850



DESIGN DATA
FOR DRAINAGE STRUCTURE AT
STA.11+54

DRAINAGE AREA	= 1.8 HA
DESIGN FREQUENCY	= 50 YRS
DESIGN DISCHARGE	= 0.156cms
DESIGN HW ELEVATION	= 39.07 m
100 YEAR DISCHARGE	= 0.189cms
100 YEAR HW ELEVATION	= 39.19 m
OVERTOPPING FREQUENCY	= 500+ YRS
OVERTOPPING DISCHARGE	= 0.43cms
OVERTOPPING	= 40.58 m

SEE SHEET NO.35 FOR -Y2- LT LN PLAN



BM *4 RR SPIKE IN BASE OF 750mm PINE
86.610 RT OF -L- STA.284+93.432 EL= 42.011

SEE SHEET NO.35 FOR -Y2- RT LN PLAN

\$\$\$\$\$SYTIME\$\$\$\$\$
\$\$\$\$\$DGN\$\$\$\$\$
\$\$\$\$\$USERAM\$\$\$\$\$