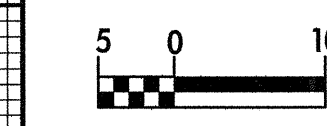


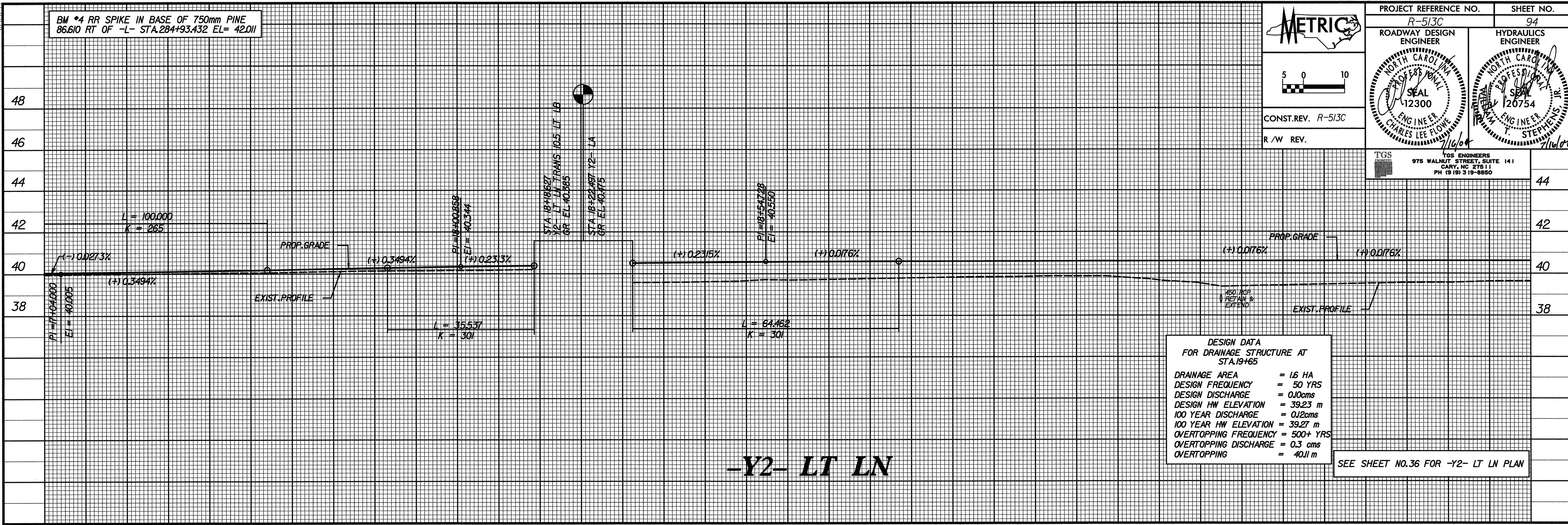
BM *4 RR SPIKE IN BASE OF 750mm PINE
86.610 RT OF -L- STA.284+93.432 EL= 42.011



PROJECT REFERENCE NO. R-513C	SHEET NO. 94
ROADWAY DESIGN ENGINEER	HYDRAULICS ENGINEER
CONST. REV. R-513C	R / W REV.



TGS ENGINEERS
975 WALNUT STREET, SUITE 141
CARY, NC 27511
PH (919) 319-8850



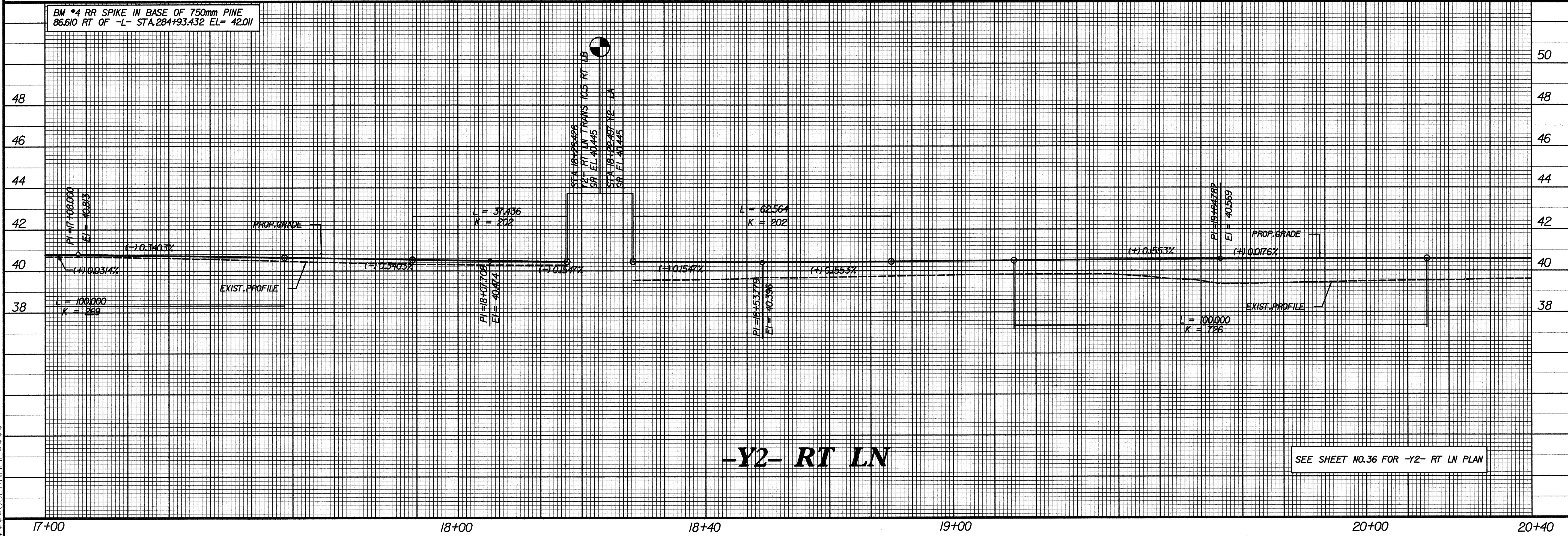
DESIGN DATA
FOR DRAINAGE STRUCTURE AT
STA.19+65

DRAINAGE AREA	= 16 HA
DESIGN FREQUENCY	= 50 YRS
DESIGN DISCHARGE	= 0.10cms
DESIGN HW ELEVATION	= 39.23 m
100 YEAR DISCHARGE	= 0.12cms
100 YEAR HW ELEVATION	= 39.27 m
OVERTOPPING FREQUENCY	= 500+ YRS
OVERTOPPING DISCHARGE	= 0.3 cms
OVERTOPPING	= 4011 m

SEE SHEET NO.36 FOR -Y2- LT LN PLAN

-Y2- LT LN

BM *4 RR SPIKE IN BASE OF 750mm PINE
86.610 RT OF -L- STA.284+93.432 EL= 42.011



SEE SHEET NO.36 FOR -Y2- RT LN PLAN

-Y2- RT LN

SYSTEMS
 DGN
 FINISH
 07/14/04 12:53:55 PM