
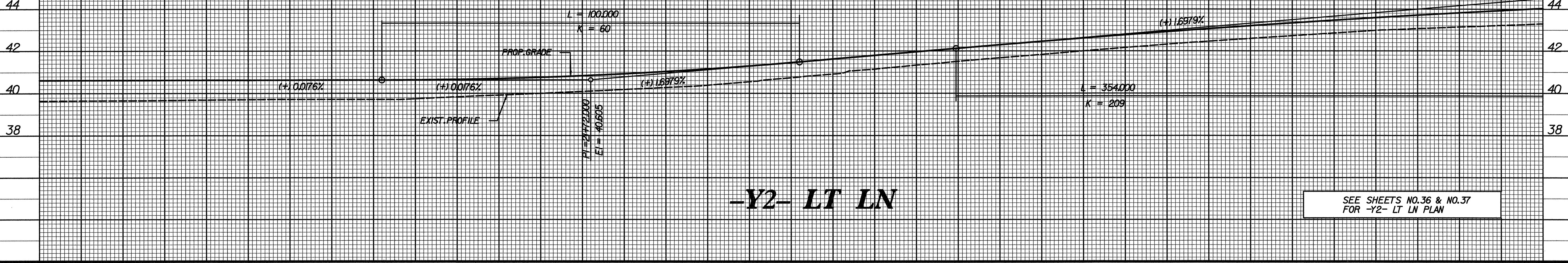


BM *4 RR SPIKE IN BASE OF 750mm PINE
86.610 RT OF -L- STA.284+93.432 EL= 42.011

 5 0 10 CONST. REV. R/W REV.	PROJECT REFERENCE NO. R-513C	SHEET NO. 95
	ROADWAY DESIGN ENGINEER NORTH CAROLINA PROFESSIONAL SEAL 12300 CHARLES LEE FLOWE	HYDRAULICS ENGINEER NORTH CAROLINA PROFESSIONAL SEAL 20754 T. STEPHENS
TGS ENGINEERS 975 WALNUT STREET, SUITE 141 CARY, NC 27511 PH (919) 319-8850		

52
50
48
46
44
42
40
38

48
46
44
42
40
38



20+40 21+00 22+00 23+00 24+00

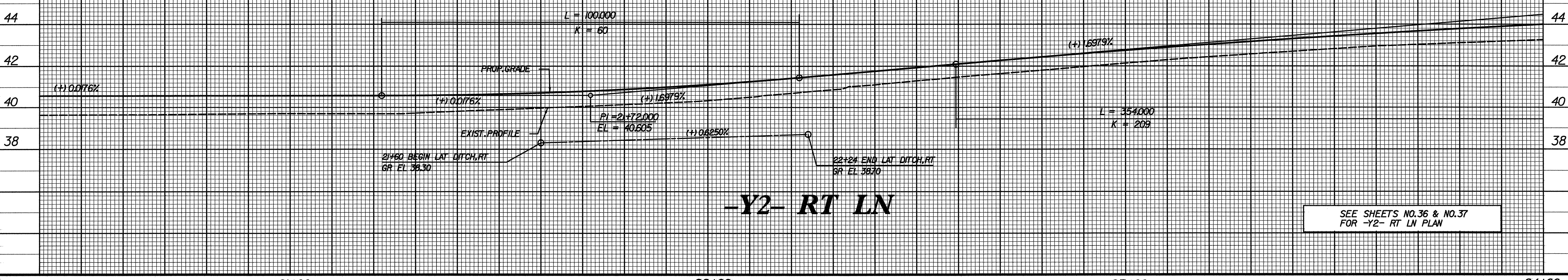
BM *4 RR SPIKE IN BASE OF 750mm PINE
86.610 RT OF -L- STA.284+93.432 EL= 42.011

\$\$\$SYTIME\$\$\$\$
\$\$\$DESIGN\$\$\$\$
\$\$\$USFRNML\$\$\$\$

SEE SHEETS NO.36 & NO.37 FOR -Y2-RT LN PLAN

52
50
48
46
44
42
40
38

52
50
48
46
44
42
40
38



20+40 21+00 22+00 23+00 24+00