

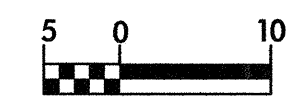
BM *4 RR SPIKE IN BASE OF 750mm PINE
86610 RT OF -L- STA.284+93.432 EL= 42.011



PROJECT REFERENCE NO. R-513C SHEET NO. 98

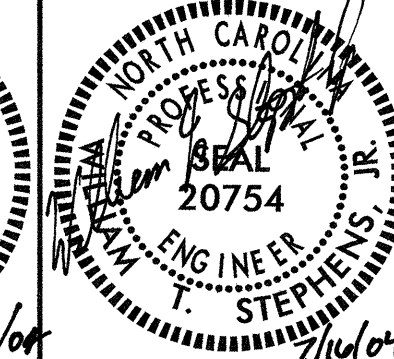
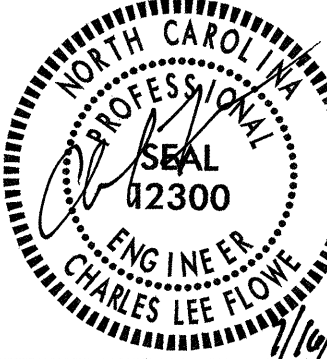
ROADWAY DESIGN ENGINEER

HYDRAULICS ENGINEER

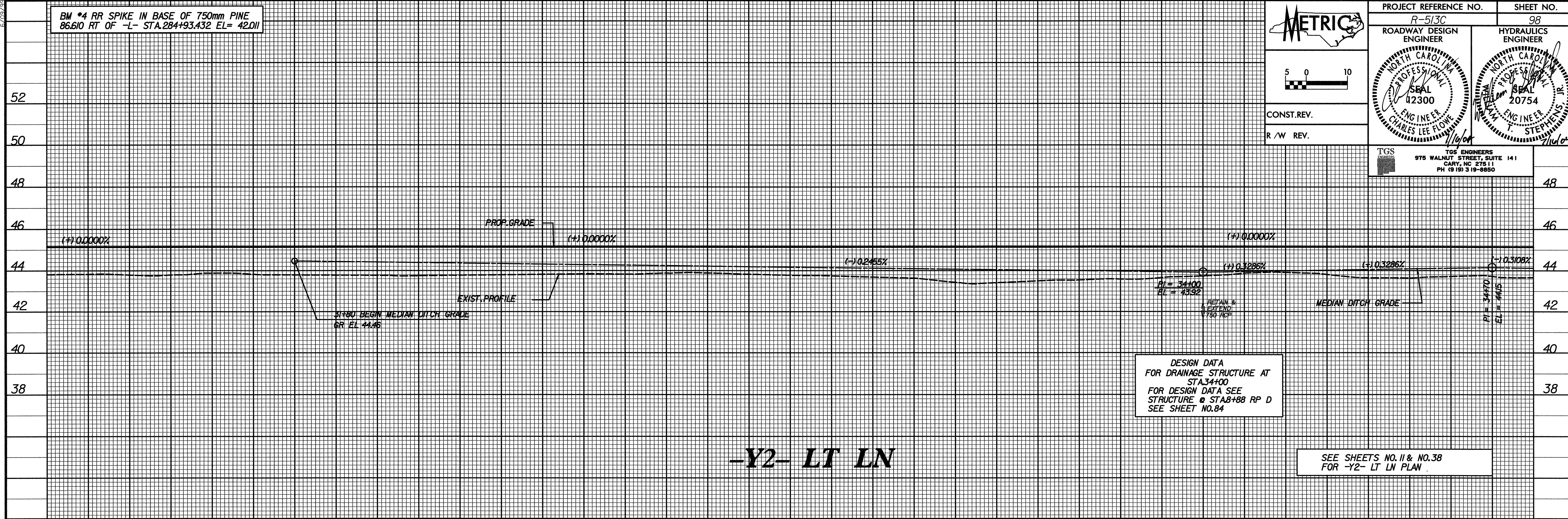


CONST. REV.

R / W REV.



TGS ENGINEERS
975 WALNUT STREET, SUITE 141
CARY, NC 27511
PH (919) 315-8850



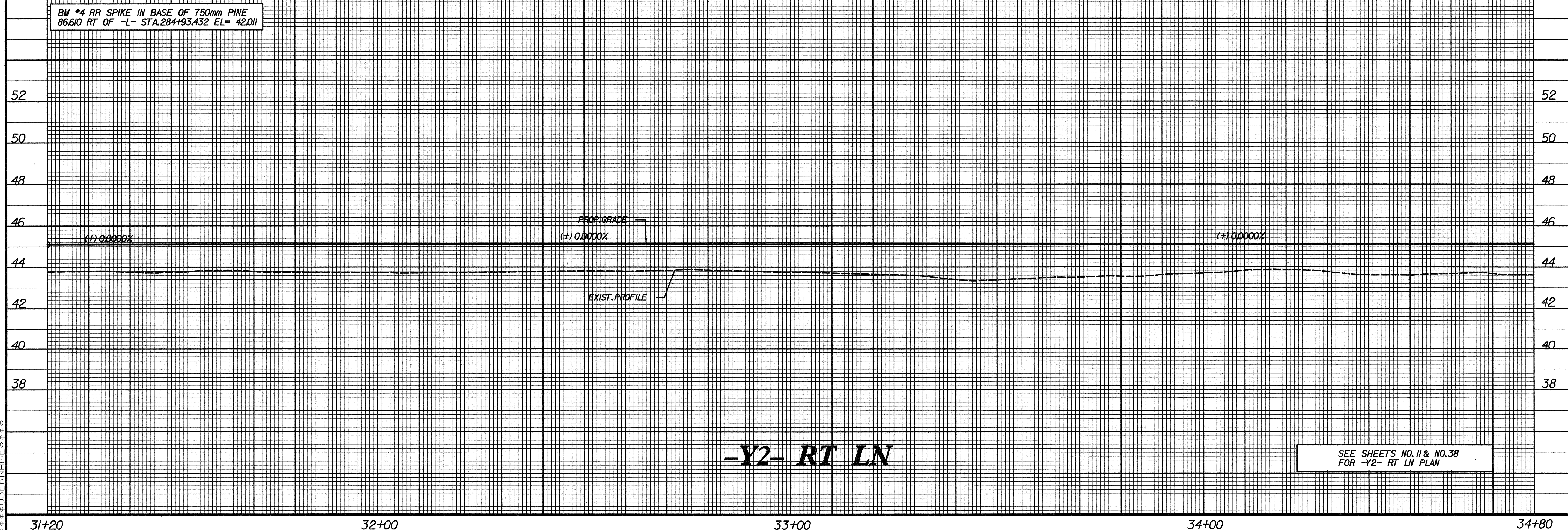
DESIGN DATA
FOR DRAINAGE STRUCTURE AT
STA. 34+00
FOR DESIGN DATA SEE
STRUCTURE @ STA. 8+88 RP D
SEE SHEET NO. 84

SEE SHEETS NO. 11 & NO. 38
FOR -Y2- LT LN PLAN

-Y2- LT LN

31+20 32+00 33+00 34+00 34+80

BM *4 RR SPIKE IN BASE OF 750mm PINE
86610 RT OF -L- STA.284+93.432 EL= 42.011



SEE SHEETS NO. 11 & NO. 38
FOR -Y2- RT LN PLAN

-Y2- RT LN

31+20 32+00 33+00 34+00 34+80

\$\$\$\$\$SYTIME\$\$\$\$\$
\$\$\$\$\$UNGN\$\$\$\$\$
\$\$\$\$\$USRNAM\$\$\$\$\$