
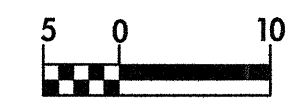
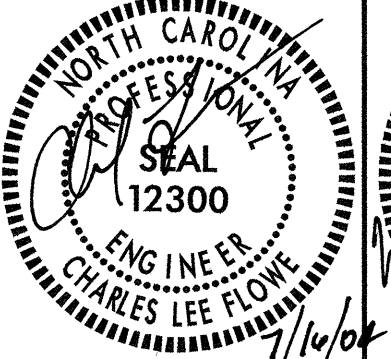
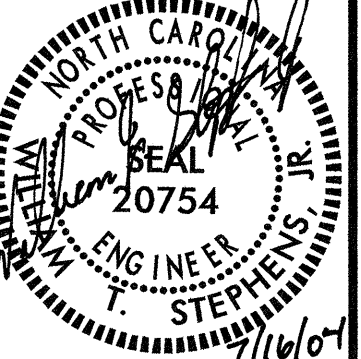

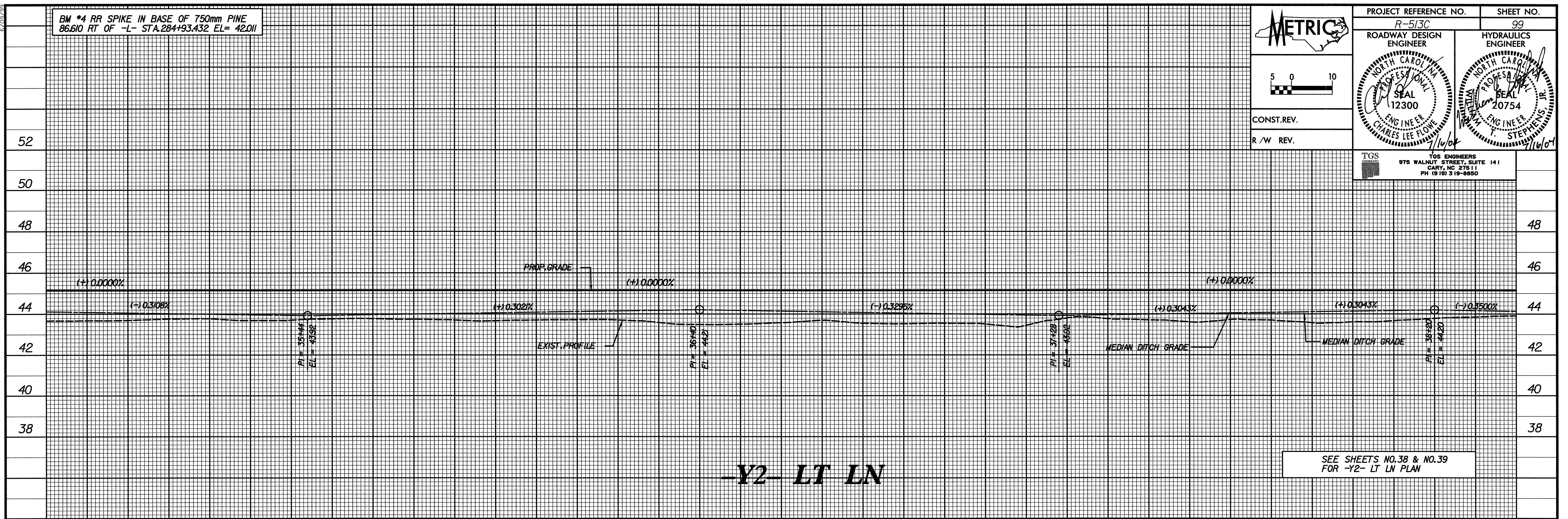


BM *4 RR SPIKE IN BASE OF 750mm PINE
86.610 RT OF -L- STA.284+93.432 EL= 42.011

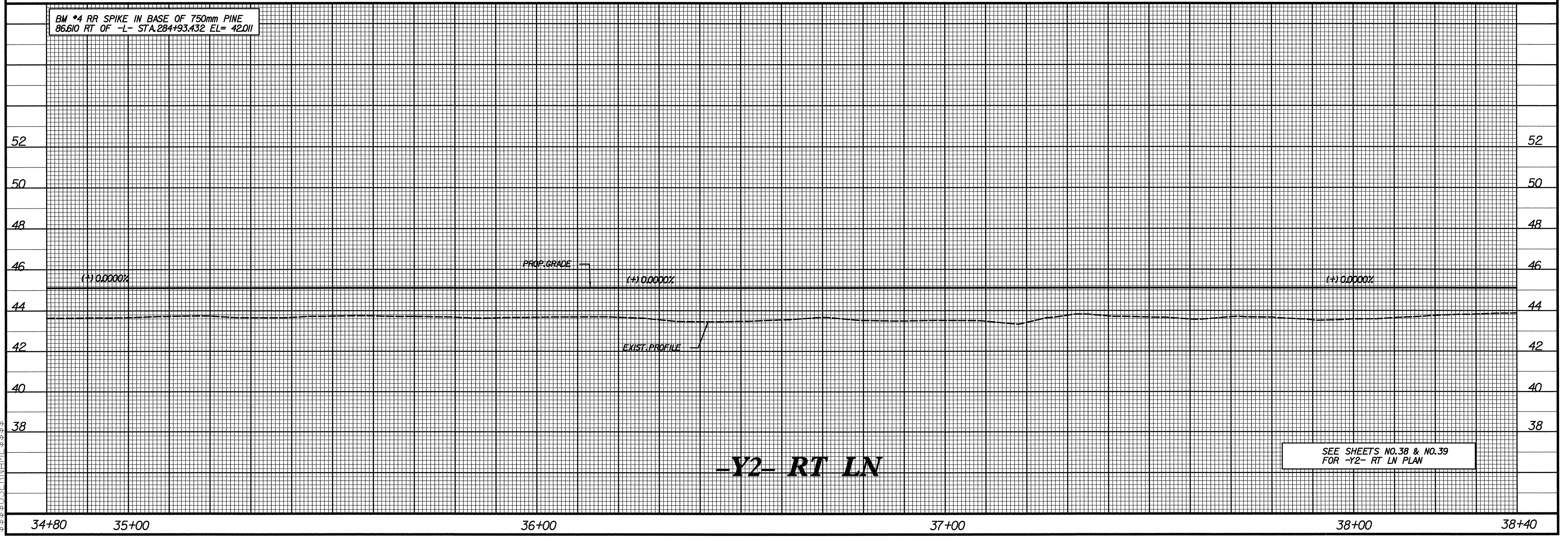
  CONST. REV. R / W REV.	PROJECT REFERENCE NO. R-513C ROADWAY DESIGN ENGINEER	SHEET NO. 99 HYDRAULICS ENGINEER
		
 TGS ENGINEERS 975 WALNUT STREET, SUITE 141 CARY, NC 27511 PH (919) 315-8850		



SEE SHEETS NO.38 & NO.39
FOR -Y2- LT LN PLAN

BM *4 RR SPIKE IN BASE OF 750mm PINE
86.610 RT OF -L- STA.284+93.432 EL= 42.011

\$\$\$\$\$SYTIME\$\$\$\$\$
\$\$\$\$\$SY\$\$\$\$\$
\$\$\$\$\$DGN\$\$\$\$\$
\$\$\$\$\$USFRNAM\$\$\$\$\$



SEE SHEETS NO.38 & NO.39
FOR -Y2- RT LN PLAN