

BM *4 RR SPIKE IN BASE OF 750mm PINE
86.610 RT OF -L- STA.284+93.432 EL= 42.011

PROJECT REFERENCE NO. R-513C SHEET NO. 100

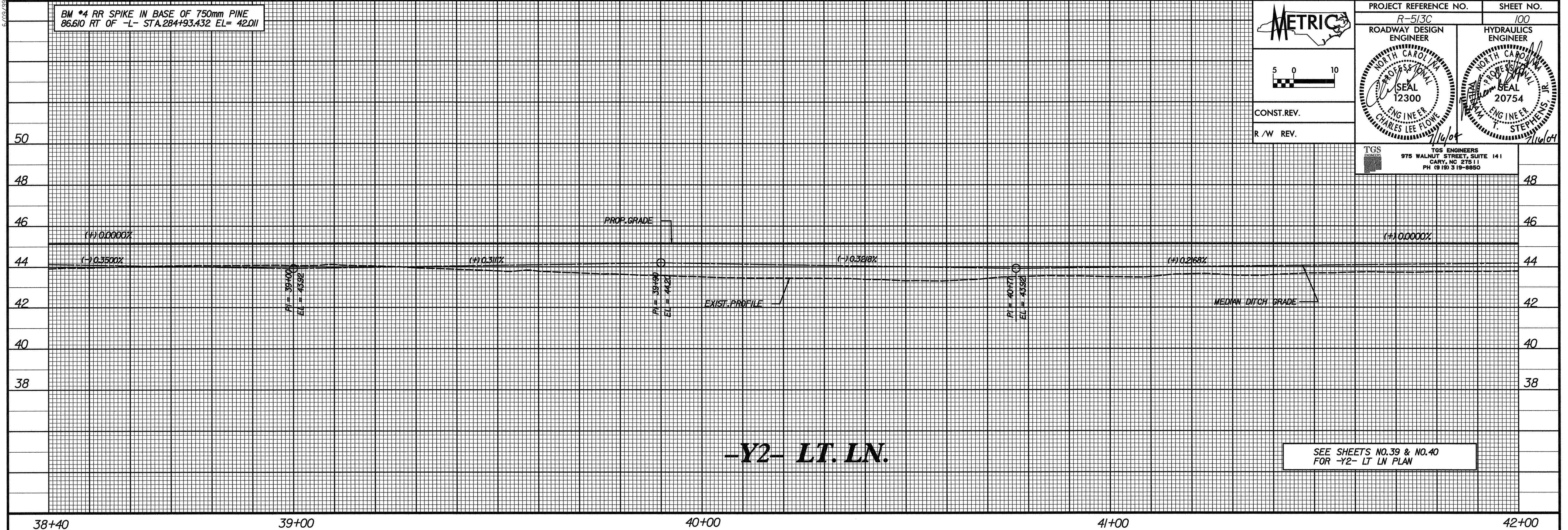
ROADWAY DESIGN ENGINEER HYDRAULICS ENGINEER

5 0 10

CONST. REV.
R/W REV.

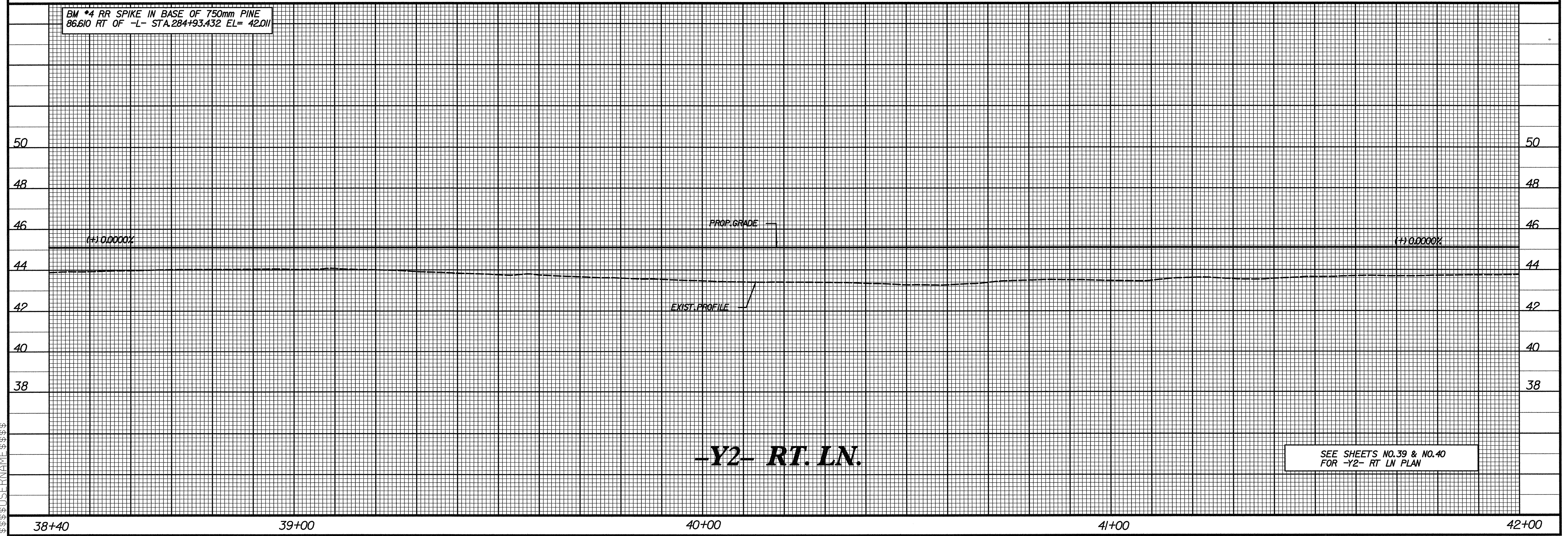
TGS ENGINEERS
975 WALNUT STREET, SUITE 141
CARY, NC 27511
PH (919) 318-6880

7/16/04



SEE SHEETS NO.39 & NO.40
FOR -Y2- LT LN PLAN

BM *4 RR SPIKE IN BASE OF 750mm PINE
86.610 RT OF -L- STA.284+93.432 EL= 42.011



SEE SHEETS NO.39 & NO.40
FOR -Y2- RT LN PLAN

\$\$\$ SYSTEME \$\$\$
\$\$\$ DGN \$\$\$
\$\$\$ PLAN \$\$\$
\$\$\$ JUSTINAVE \$\$\$