
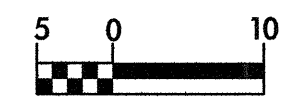
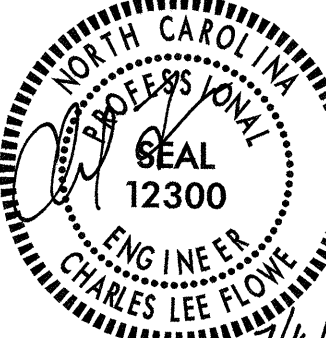
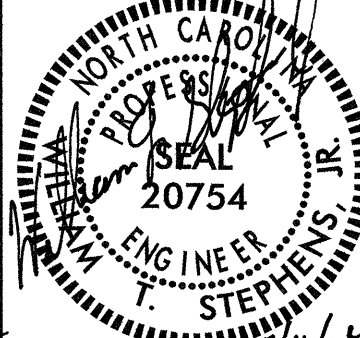
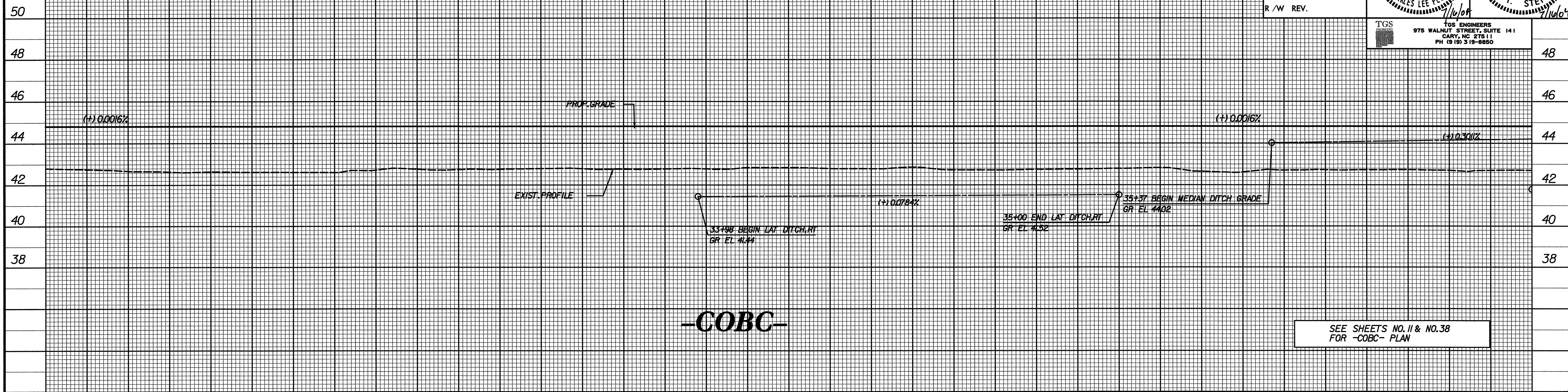


BM \*4 RR SPIKE IN BASE OF 750mm PINE  
86.610 RT OF -L- STA.284+93.432 EL= 42.011

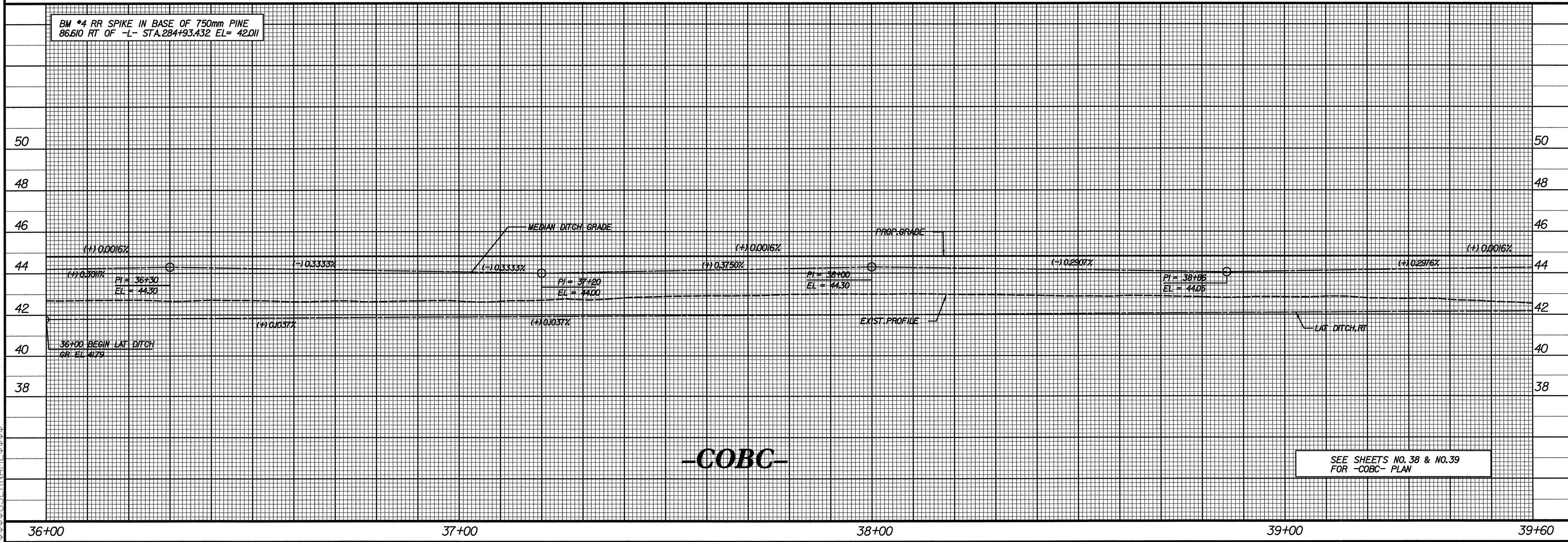
  CONST. REV. R/W REV.	PROJECT REFERENCE NO. R-513C ROADWAY DESIGN ENGINEER	SHEET NO. 109 HYDRAULICS ENGINEER
	 ENGINEER CHARLES LEE FLOVE 1/16/04	 ENGINEER T. STEPHENS 1/16/04
TGS ENGINEERS 975 WALNUT STREET, SUITE 141 CARY, NC 27511 PH 919 319-8850		



**-COBC-**

SEE SHEETS NO. 11 & NO. 38  
FOR -COBC- PLAN

BM \*4 RR SPIKE IN BASE OF 750mm PINE  
86.610 RT OF -L- STA.284+93.432 EL= 42.011



**-COBC-**

SEE SHEETS NO. 38 & NO. 39  
FOR -COBC- PLAN

SYSTEMS DESIGN SERVICES  
 10000 WILSON ROAD, SUITE 100  
 WILSON, NC 27157  
 PH 919 319-8850