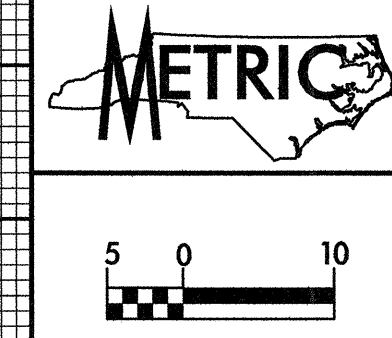


BM #14 STD.NCGS CONC.MONUMENT,
STAMPED ANDY,1977
6.296 RT OF -Y3- STA.17+01.835 EL= 46J01



| | |
|---------------------------------|---------------------|
| PROJECT REFERENCE NO. R-513C | SHEET NO. 111 |
| ROADWAY DESIGN ENGINEER | HYDRAULICS ENGINEER |
| | |
| CONST.REV. | |
| R/W REV. | |
| | |

52

50

48

46

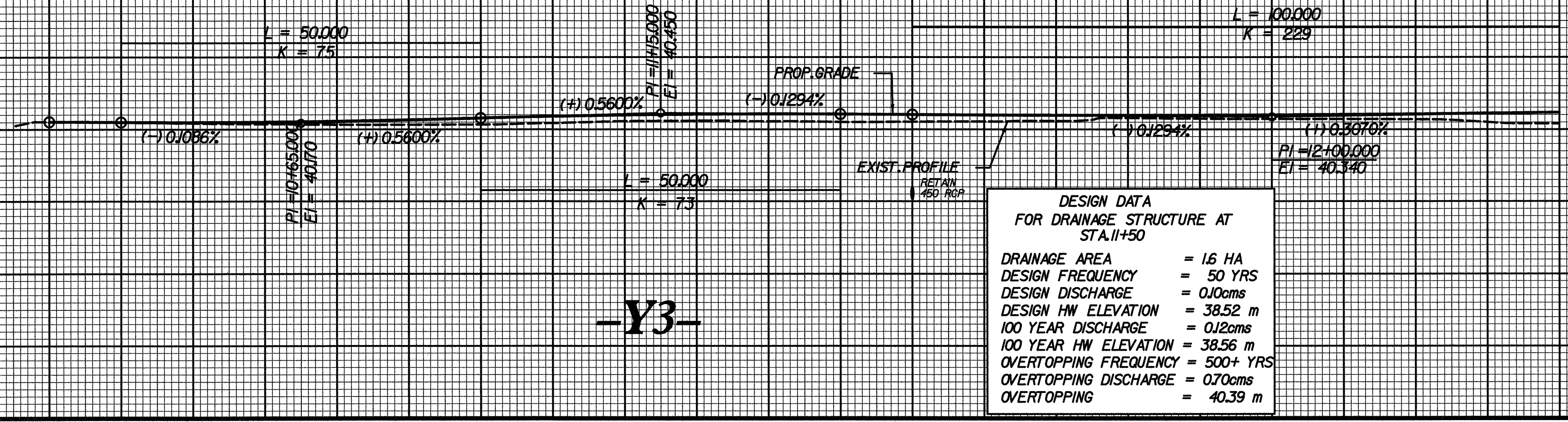
44

STA 10+30.000
BEGIN GR EL = 40.208

42

40

38



DESIGN DATA
FOR DRAINAGE STRUCTURE AT
STA.11+50

DRAINAGE AREA = 16 HA
DESIGN FREQUENCY = 50 YRS
DESIGN DISCHARGE = 0.10cms
DESIGN HW ELEVATION = 38.52 m
100 YEAR DISCHARGE = 0.12cms
100 YEAR HW ELEVATION = 38.56 m
OVERTOPPING FREQUENCY = 500+ YRS
OVERTOPPING DISCHARGE = 0.70cms
OVERTOPPING = 40.39 m

SEE SHEET NO.42 FOR -Y3- PLAN

10+00

11+00

12+00

12+40

BM #14 STD.NCGS CONC.MONUMENT,
STAMPED ANDY,1977
6.296 RT OF -Y3- STA.17+01.835 EL= 46J01

52

50

48

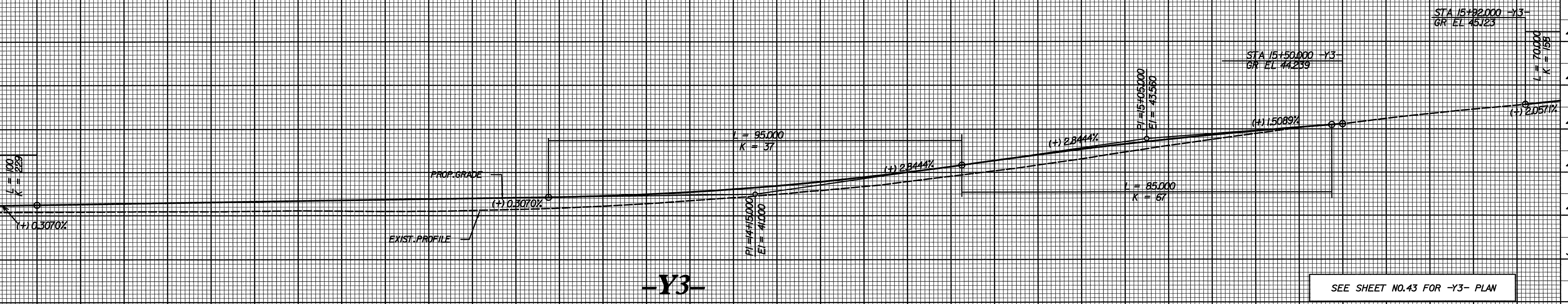
46

44

42

40

38



SEE SHEET NO.43 FOR -Y3- PLAN

12+40

13+00

14+00

15+00

16+00

SYSTEMS\$\$\$\$\$
\$\$\$\$\$DGN\$\$\$\$\$
\$\$\$\$\$USERAVL\$\$\$\$\$