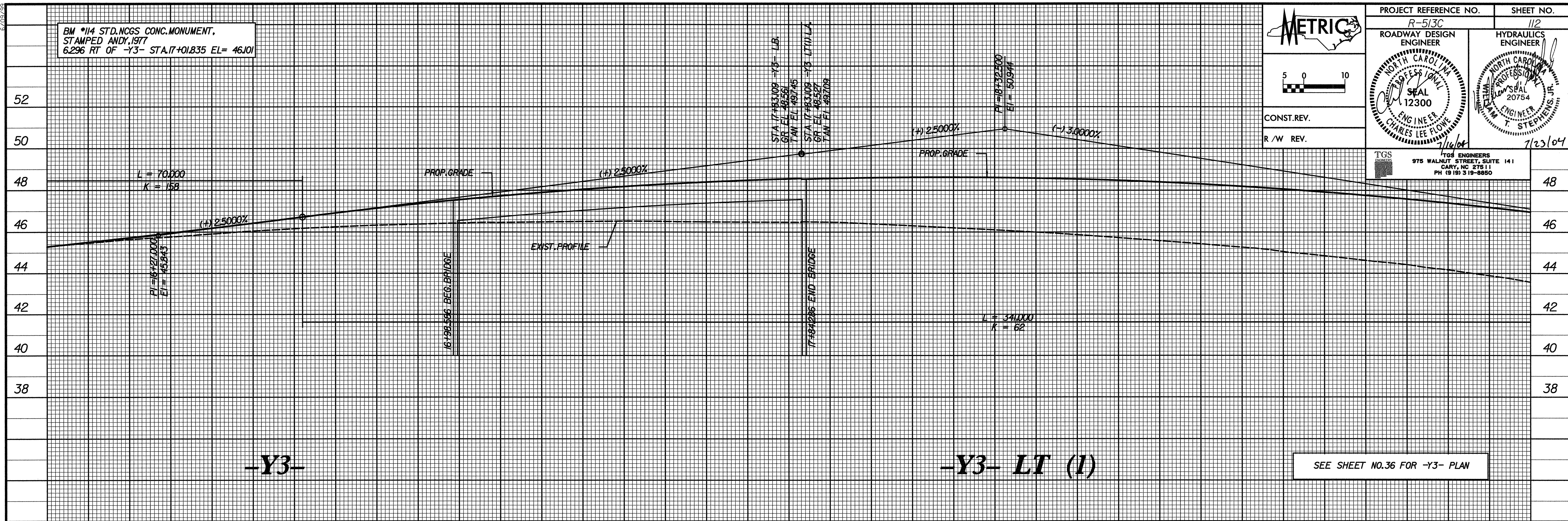


BM \*14 STD.NCGS CONC.MONUMENT,  
STAMPED ANDY,1977  
6.296 RT OF -Y3- STA.17+01.835 EL= 46.101

5 0 10

CONST.REV.  
R / W REV.

PROJECT REFERENCE NO. R-513C	SHEET NO. 112
ROADWAY DESIGN ENGINEER	HYDRAULICS ENGINEER
TGS	TGS ENGINEERS
975 WALNUT STREET, SUITE 141 CARY, NC 27511 PH (919) 319-8850	



\$\$\$\$SYTIME\$\$\$\$  
\$\$\$\$CNCN\$\$\$\$  
\$\$\$\$PCN\$\$\$\$  
\$\$\$\$PRN\$\$\$\$  
\$\$\$\$PL\$\$\$\$  
\$\$\$\$\$\$\$\$\$\$\$\$

