

BM *114 STD. NCGS CONC. MONUMENT,
STAMPED ANDY, 1977
6.296 RT OF -Y3- STA. 17+01.835 EL= 46.101

METRIC

PROJECT REFERENCE NO. R-513C SHEET NO. 117

ROADWAY DESIGN ENGINEER
HYDRAULICS ENGINEER

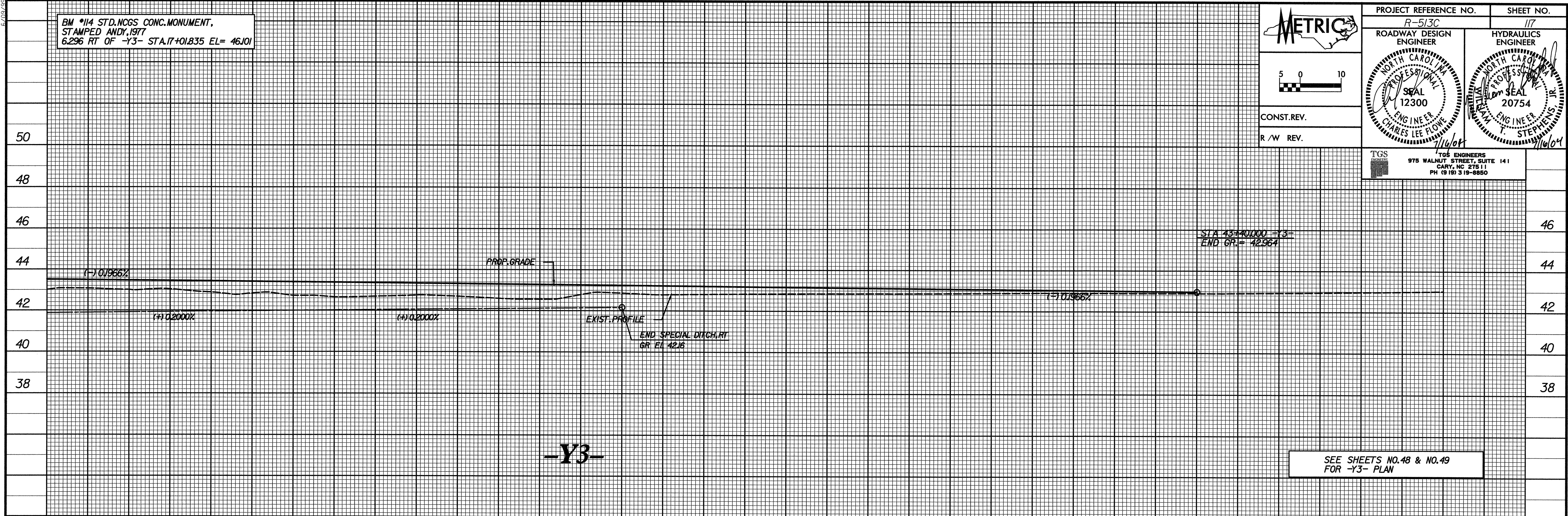
5 0 10

CONST. REV.
R/W REV.

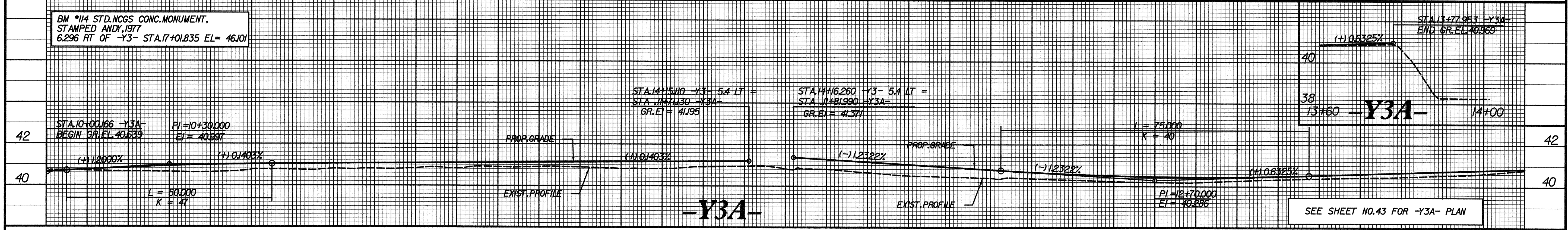
TGS ENGINEERS
975 WALNUT STREET, SUITE 141
CARY, NC 27511
PH (919) 319-8850

1/14/04

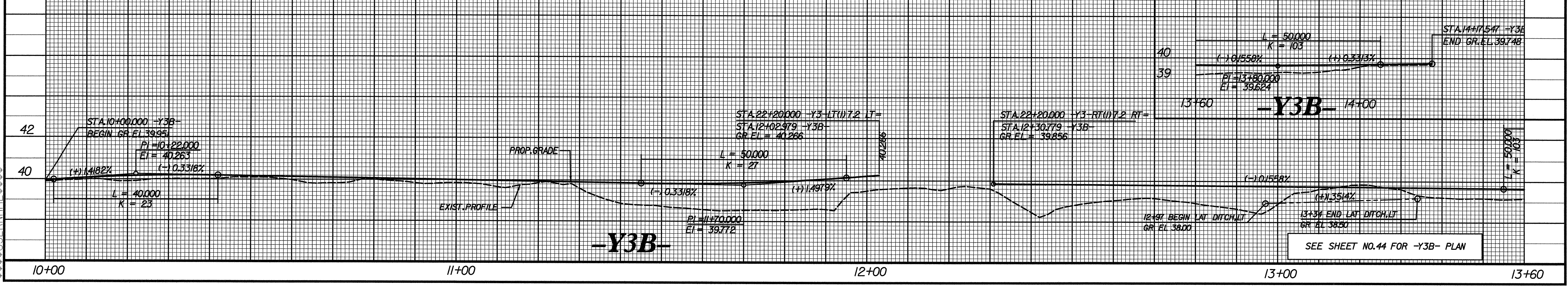
1/16/04



BM *114 STD. NCGS CONC. MONUMENT,
STAMPED ANDY, 1977
6.296 RT OF -Y3- STA. 17+01.835 EL= 46.101



BM *114 STD. NCGS CONC. MONUMENT,
STAMPED ANDY, 1977
6.296 RT OF -Y3- STA. 17+01.835 EL= 46.101



US
S
T
I
M
L
L
S
C
O
P
Y
P
R
I
N
T
E
D
I
N
A
N
I
M
A
G
E
F
O
R
M
A
T
I
O
N
P
L
E
A
S
E
D
O
N
T
R
I
B
U
T
E
T
O
T
H
E
R
I
N
F
O
R
M
A
T
I
O
N
O
N
T
H
E
S
E
S
H
E
E
T
S