

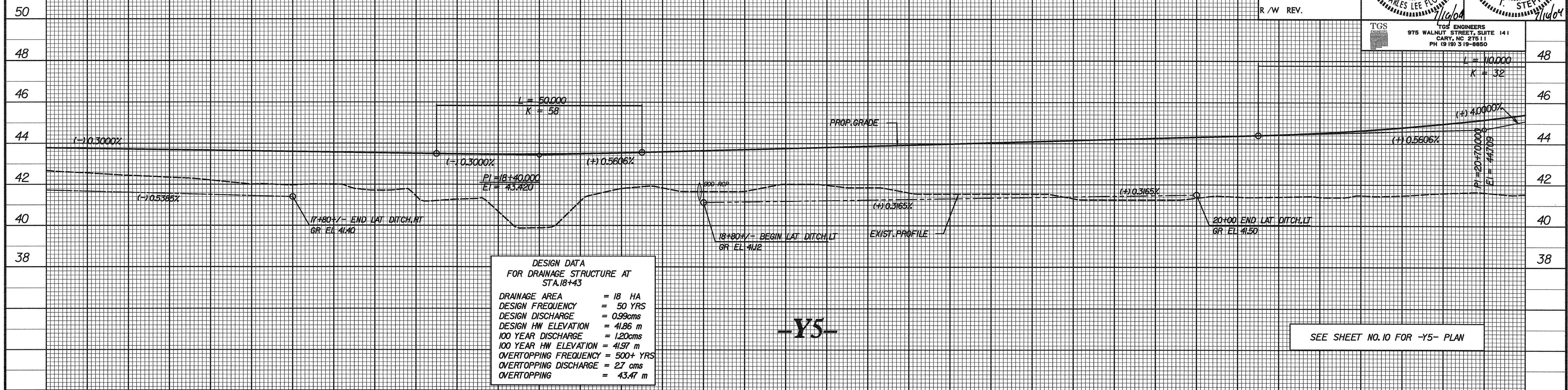
BM \*14 STD.NCGS CONC.MONUMENT,  
STAMPED ANDY.1977  
6.296 RT OF -Y3- STA.17+01.835 EL= 46J01

5 0 10

CONST.REV.  
R /W REV.

PROJECT REFERENCE NO. R-513C	SHEET NO. 120
ROADWAY DESIGN ENGINEER 12300	HYDRAULICS ENGINEER 20754
ENGINEER CHARLES LEE FLOWIE	ENGINEER T. STEPHENS

TGS ENGINEERS  
975 WALNUT STREET, SUITE 141  
CARY, NC 27511  
PH (919) 319-8850



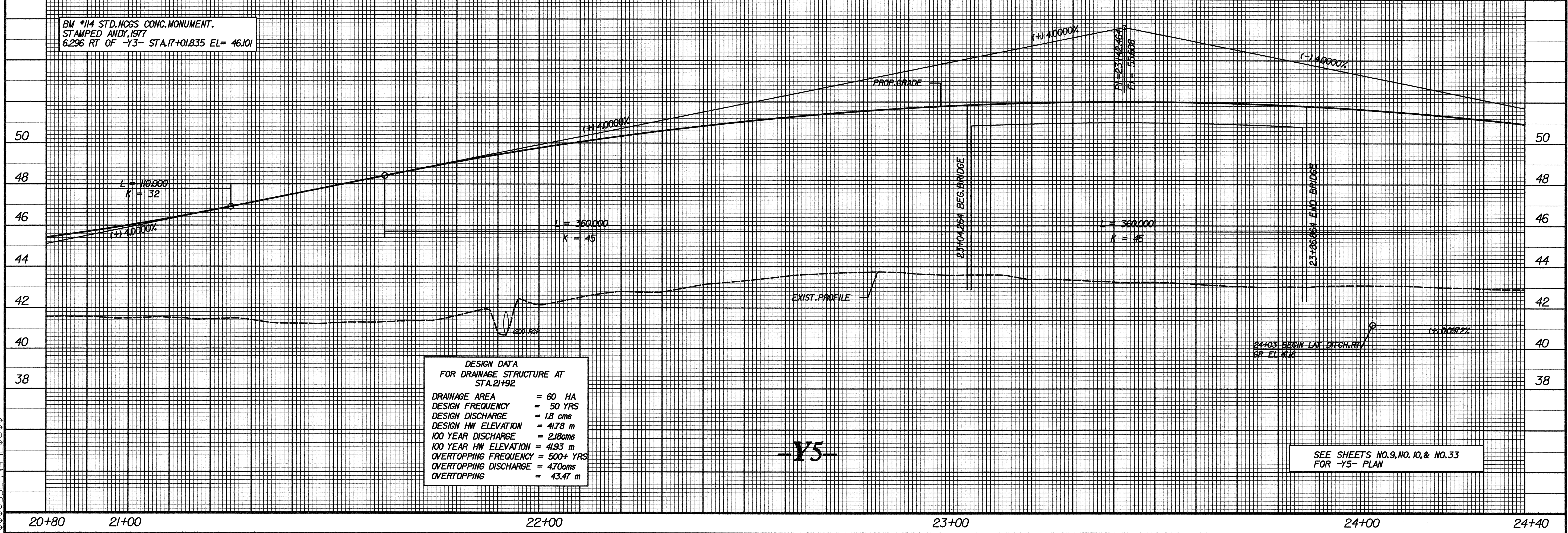
DESIGN DATA  
FOR DRAINAGE STRUCTURE AT  
STA.18+43

DRAINAGE AREA	= 18 HA
DESIGN FREQUENCY	= 50 YRS
DESIGN DISCHARGE	= 0.99cms
DESIGN HW ELEVATION	= 41.86 m
100 YEAR DISCHARGE	= 1.20cms
100 YEAR HW ELEVATION	= 41.97 m
OVERTOPPING FREQUENCY	= 500+ YRS
OVERTOPPING DISCHARGE	= 2.7 cms
OVERTOPPING	= 43.47 m

SEE SHEET NO. 10 FOR -Y5- PLAN

-Y5-

BM \*14 STD.NCGS CONC.MONUMENT,  
STAMPED ANDY.1977  
6.296 RT OF -Y3- STA.17+01.835 EL= 46J01



DESIGN DATA  
FOR DRAINAGE STRUCTURE AT  
STA.21+92

DRAINAGE AREA	= 60 HA
DESIGN FREQUENCY	= 50 YRS
DESIGN DISCHARGE	= 1.8 cms
DESIGN HW ELEVATION	= 41.78 m
100 YEAR DISCHARGE	= 2.18cms
100 YEAR HW ELEVATION	= 41.93 m
OVERTOPPING FREQUENCY	= 500+ YRS
OVERTOPPING DISCHARGE	= 4.70cms
OVERTOPPING	= 43.47 m

SEE SHEETS NO.9, NO.10, & NO.33  
FOR -Y5- PLAN

-Y5-

C:\SYTIME\\$\$\$DOWN\\$\$\$US\\$\$\$

D:\E130\WORK\BEC-Y\_PFL\_07/13/04\_03\_16\_05.PM