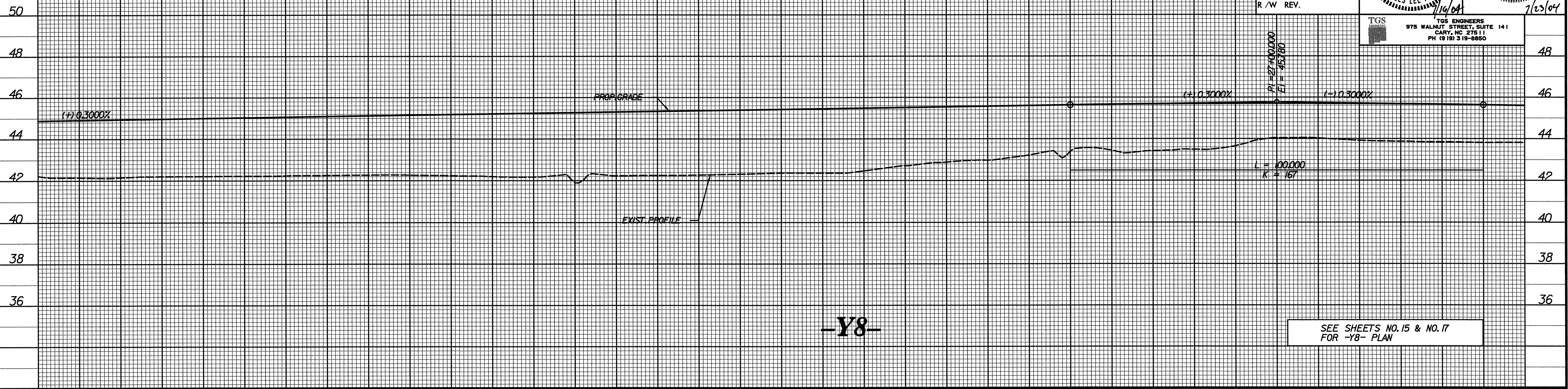
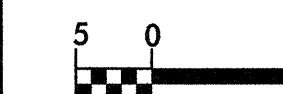


BM *5 RR SPIKE IN BASE OF 400mm PINE
55.338 RT OF -L- STA.291+42.740 EL= 43.044



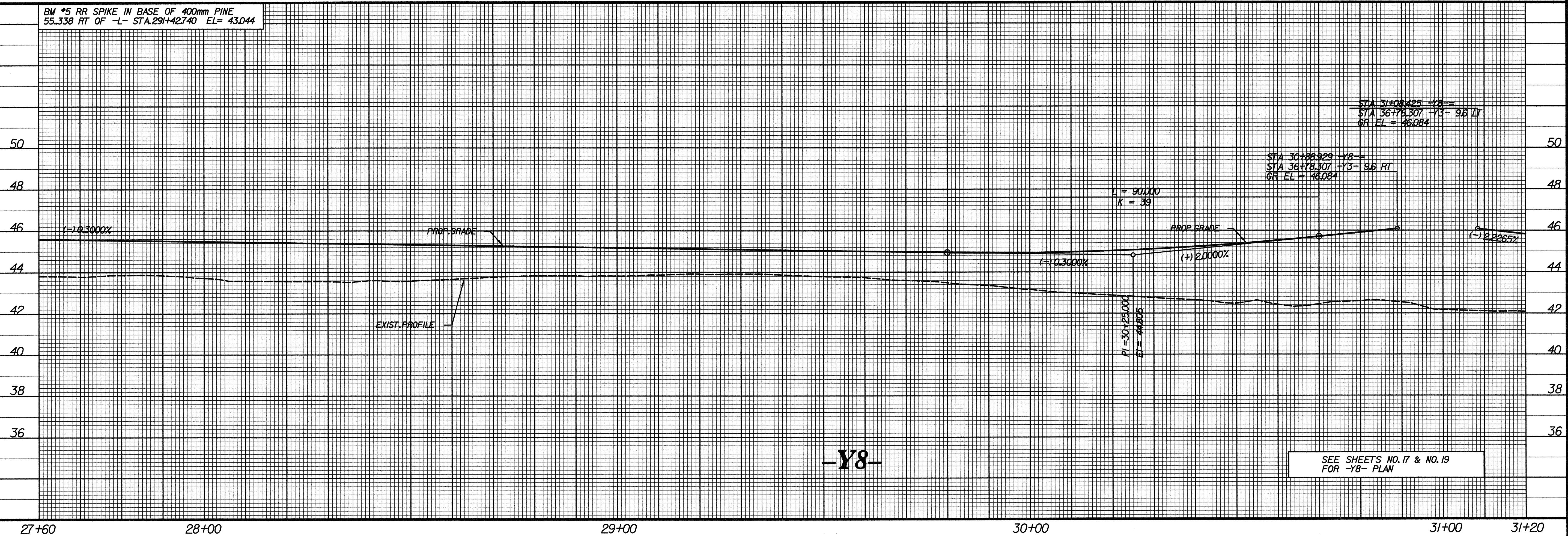
PROJECT REFERENCE NO. R-513C	SHEET NO. 124
ROADWAY DESIGN ENGINEER	HYDRAULICS ENGINEER
CONST. REV.	
R/W REV.	
TGS ENGINEERS 975 WALNUT STREET, SUITE 141 CARY, NC 27511 PH (919) 319-9850	



24+00 25+00 26+00 27+00 27+60

BM *5 RR SPIKE IN BASE OF 400mm PINE
55.338 RT OF -L- STA.291+42.740 EL= 43.044

\$\$\$\$\$SYTIME\$\$\$\$\$
\$\$\$\$\$DGN\$\$\$\$\$
\$\$\$\$\$USFRNAME\$\$\$\$\$



27+60 28+00 29+00 30+00 31+00 31+20