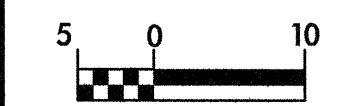
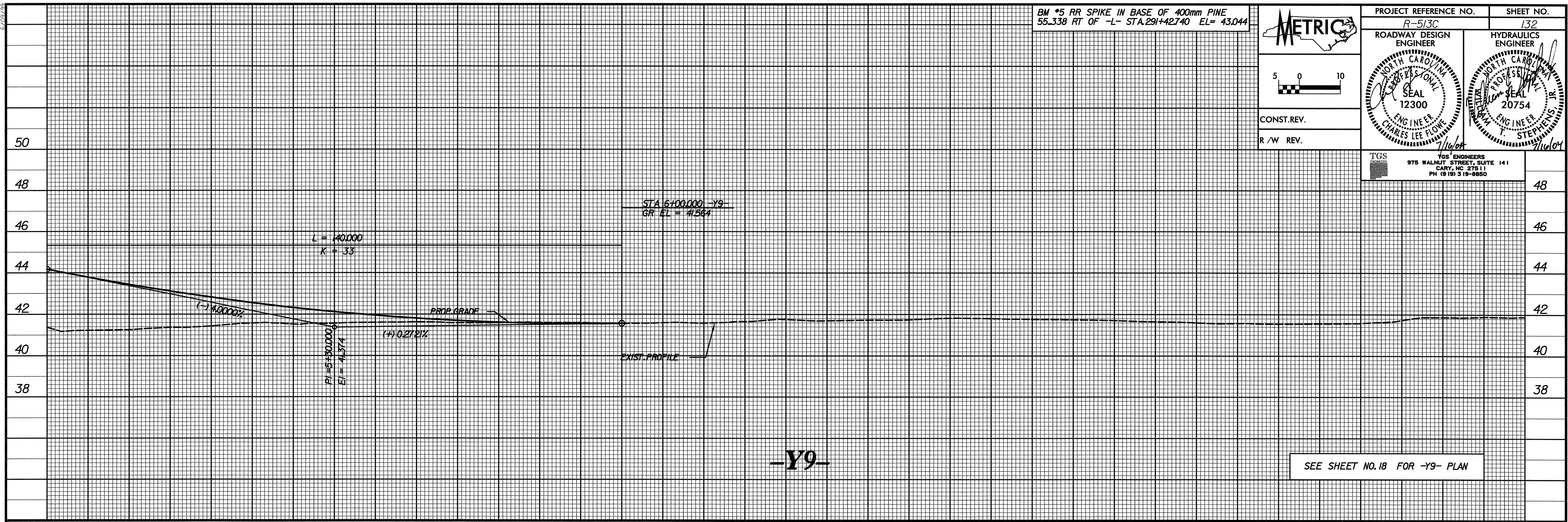


BM #5 RR SPIKE IN BASE OF 400mm PINE  
55.338 RT OF -L- STA.291+42740 EL= 43.044



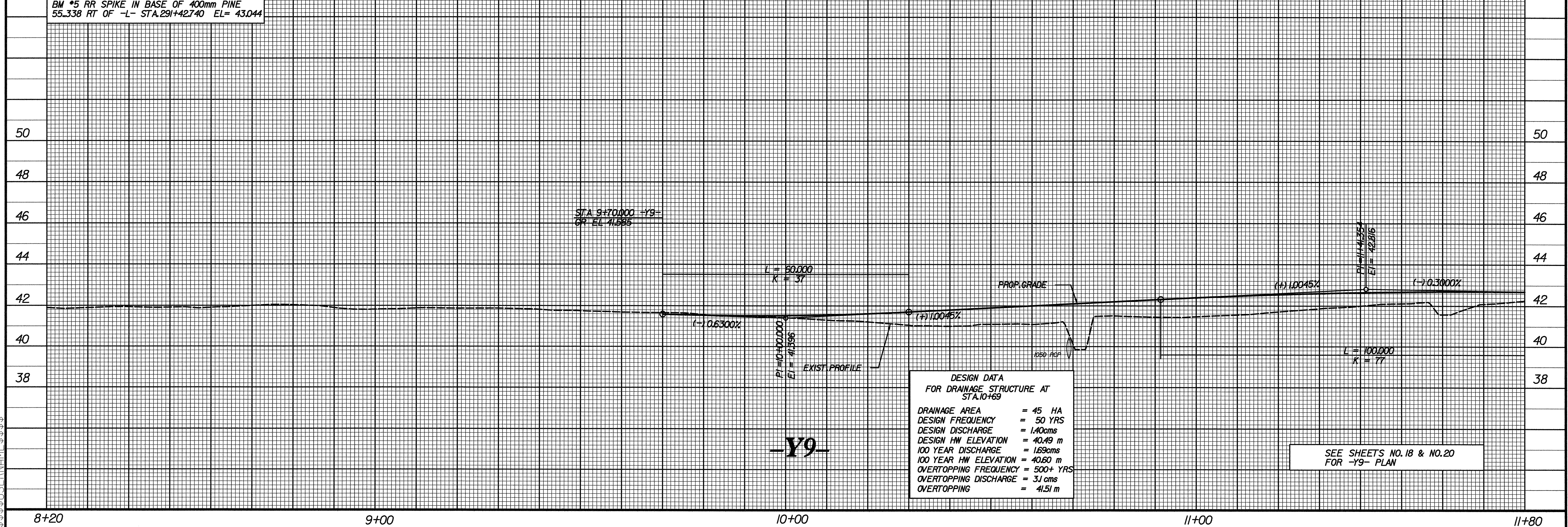
CONST. REV.  
R/W REV.

PROJECT REFERENCE NO. R-513C	SHEET NO. 132
ROADWAY DESIGN ENGINEER	HYDRAULICS ENGINEER
TGS ENGINEERS 975 WALNUT STREET, SUITE 141 CARY, NC 27511 PH (919) 319-9850	



4+60      5+00      6+00      7+00      8+00      8+20

BM #5 RR SPIKE IN BASE OF 400mm PINE  
55.338 RT OF -L- STA.291+42740 EL= 43.044



DESIGN DATA  
FOR DRAINAGE STRUCTURE AT  
STA. 10+69

DRAINAGE AREA	= 45 HA
DESIGN FREQUENCY	= 50 YRS
DESIGN DISCHARGE	= 1.40cms
DESIGN HW ELEVATION	= 40.49 m
100 YEAR DISCHARGE	= 1.69cms
100 YEAR HW ELEVATION	= 40.60 m
OVERTOPPING FREQUENCY	= 500+ YRS
OVERTOPPING DISCHARGE	= 3.1 cms
OVERTOPPING	= 4.51 m

SEE SHEETS NO. 18 & NO. 20  
FOR -Y9- PLAN

8+20      9+00      10+00      11+00      11+80

\$\$\$\$\$ SYSTEMS\$\$\$\$\$  
\$\$\$\$\$ DGN\$\$\$\$\$  
\$\$\$\$\$ USER\$\$\$\$\$