

BM *5 RR SPIKE IN BASE OF 400mm PINE
55.338 RT OF -L- STA.291+42.740 EL= 43.044



PROJECT REFERENCE NO. R-513C SHEET NO. 133

ROADWAY DESIGN ENGINEER

HYDRAULICS ENGINEER

SEAL 12300

SEAL 20754

ENGINEER CHARLES LEE FLOWERS

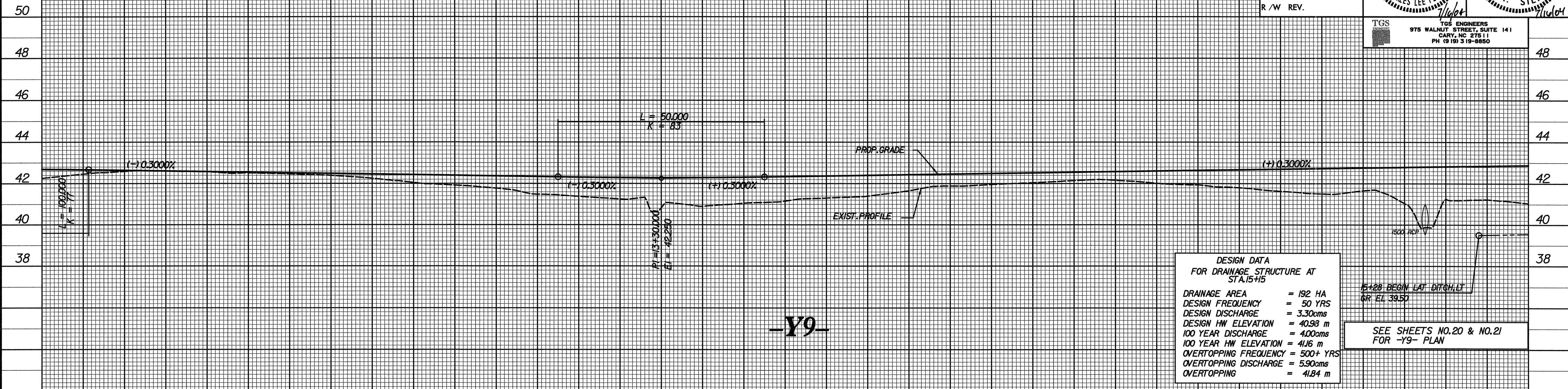
ENGINEER T. STEPHENS



CONST. REV.

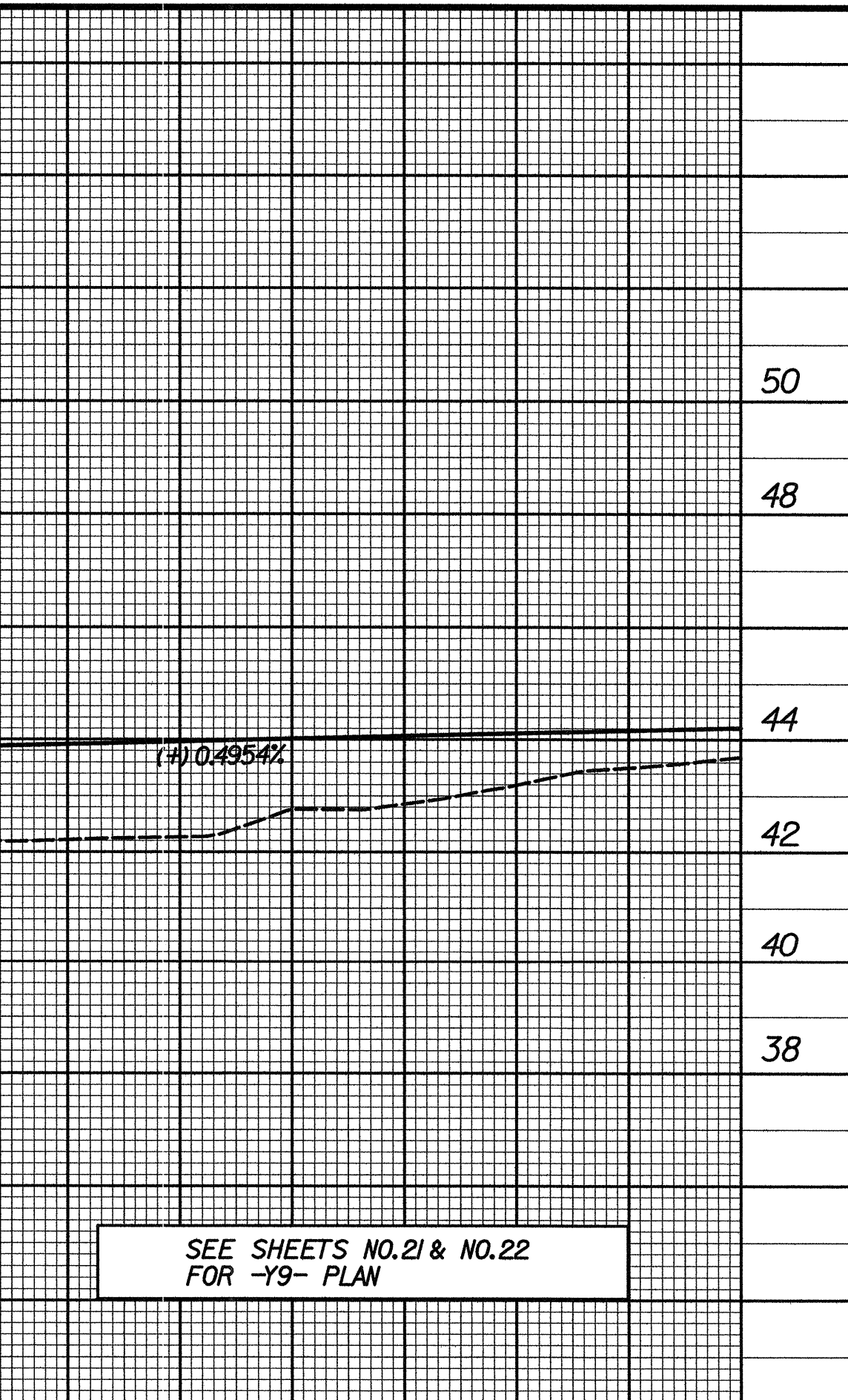
R/W REV.

TGS ENGINEERS
975 WALNUT STREET, SUITE 141
CARY, NC 27511
PH (919) 319-8850



11+80 12+00 13+00 14+00 15+00 15+40

BM *6 RR SPIKE IN BASE OF 550mm WILD CHERRY
33.415 RT OF -L- STA.311+67.690 EL= 43.801



15+40 16+00 17+00 18+00 19+00

\$\$\$SYTIME\$\$\$\$\$