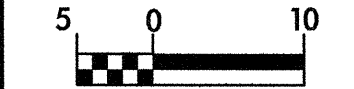


BM \*6 RR SPIKE IN BASE OF 550mm WILD CHERRY  
33.415 RT OF -L- STA.311+67.690 EL= 43.801

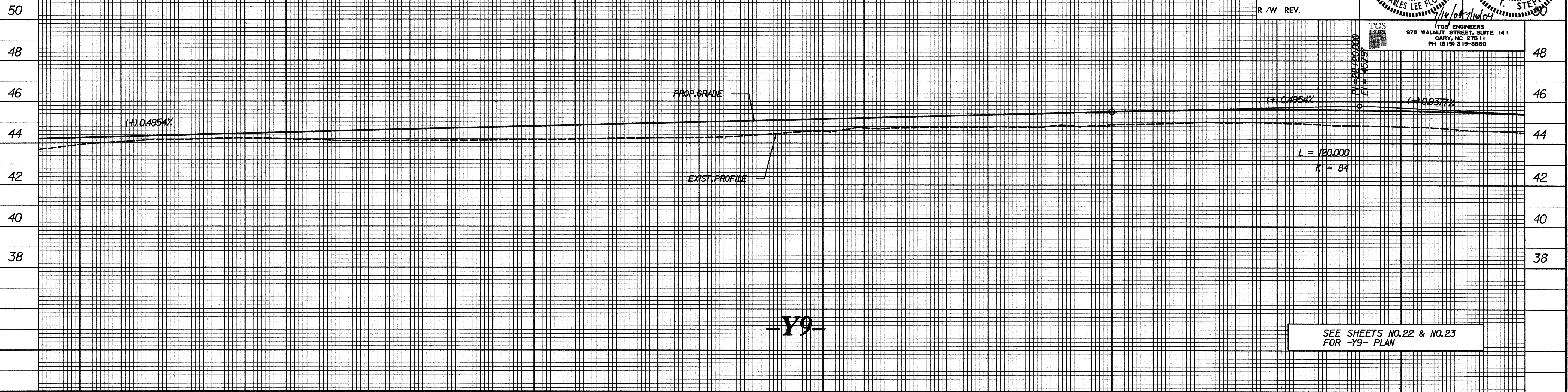


CONST. REV.

R / W REV.

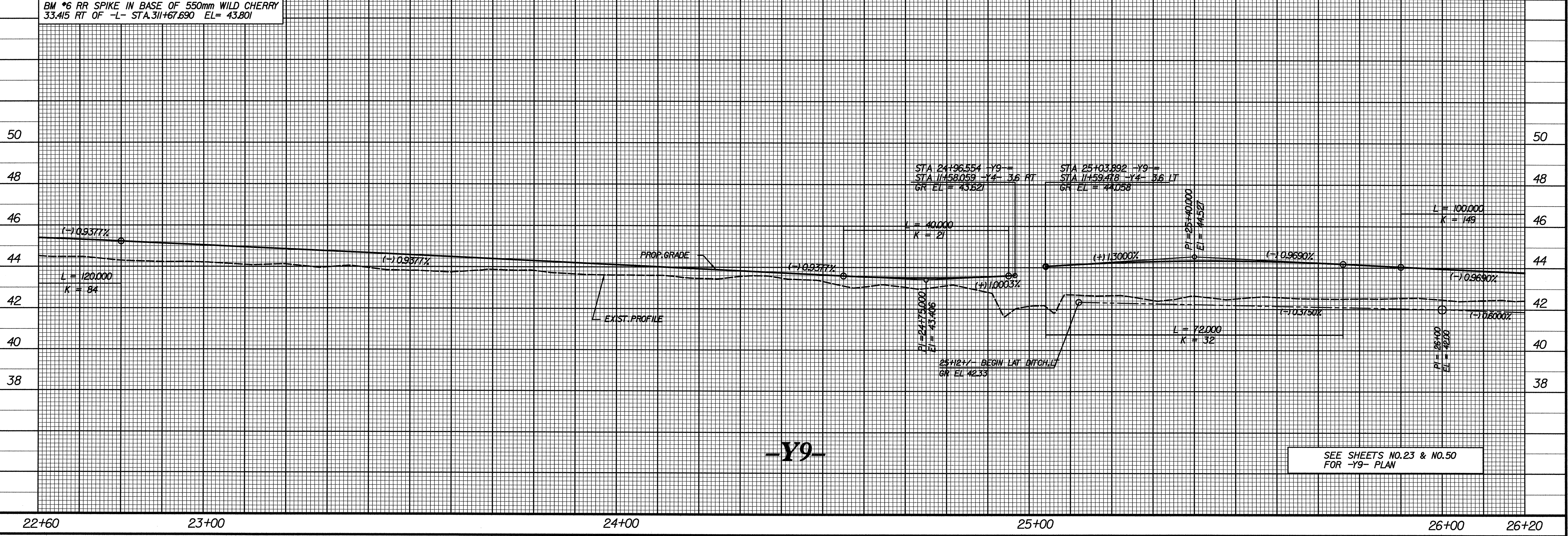
PROJECT REFERENCE NO. R-513C	SHEET NO. 134
ROADWAY DESIGN ENGINEER	HYDRAULICS ENGINEER

TGS ENGINEERS  
975 WALNUT STREET, SUITE 141  
CARY, NC 27511  
PH (919) 318-8850



SEE SHEETS NO.22 & NO.23  
FOR -Y9- PLAN

BM \*6 RR SPIKE IN BASE OF 550mm WILD CHERRY  
33.415 RT OF -L- STA.311+67.690 EL= 43.801



SEE SHEETS NO.23 & NO.50  
FOR -Y9- PLAN

SYSTEMS\$\$\$\$\$  
\$\$\$\$\$DCN\$\$\$\$\$  
\$\$\$\$\$USERNAM\$\$\$\$\$