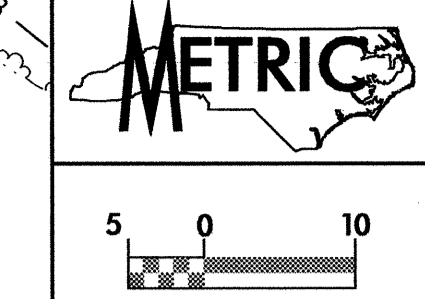


PROJECT REFERENCE NO. R-513C		SHEET NO. EC-3/CONST.4
R/W SHEET NO.		
ROADWAY DESIGN ENGINEER	HYDRAULICS ENGINEER	
CONST.REV.		
R/W REV.		



CLEARING AND GRUBBING  
EROSION CONTROL FOR  
CONSTRUCTION SHEET 4

NOTE:  
PLACE TEMPORARY ROCK SEDIMENT DAMS TYPE-B  
AND TEMPORARY ROCK SILT CHECKS TYPE-A AT  
DRAINAGE OUTLETS.

NOTE:  
TEMPORARY SILT FENCE SHALL BE INSTALLED A MINIMUM  
OF 1 METER FROM TOE OF FILL IN WETLAND AREAS

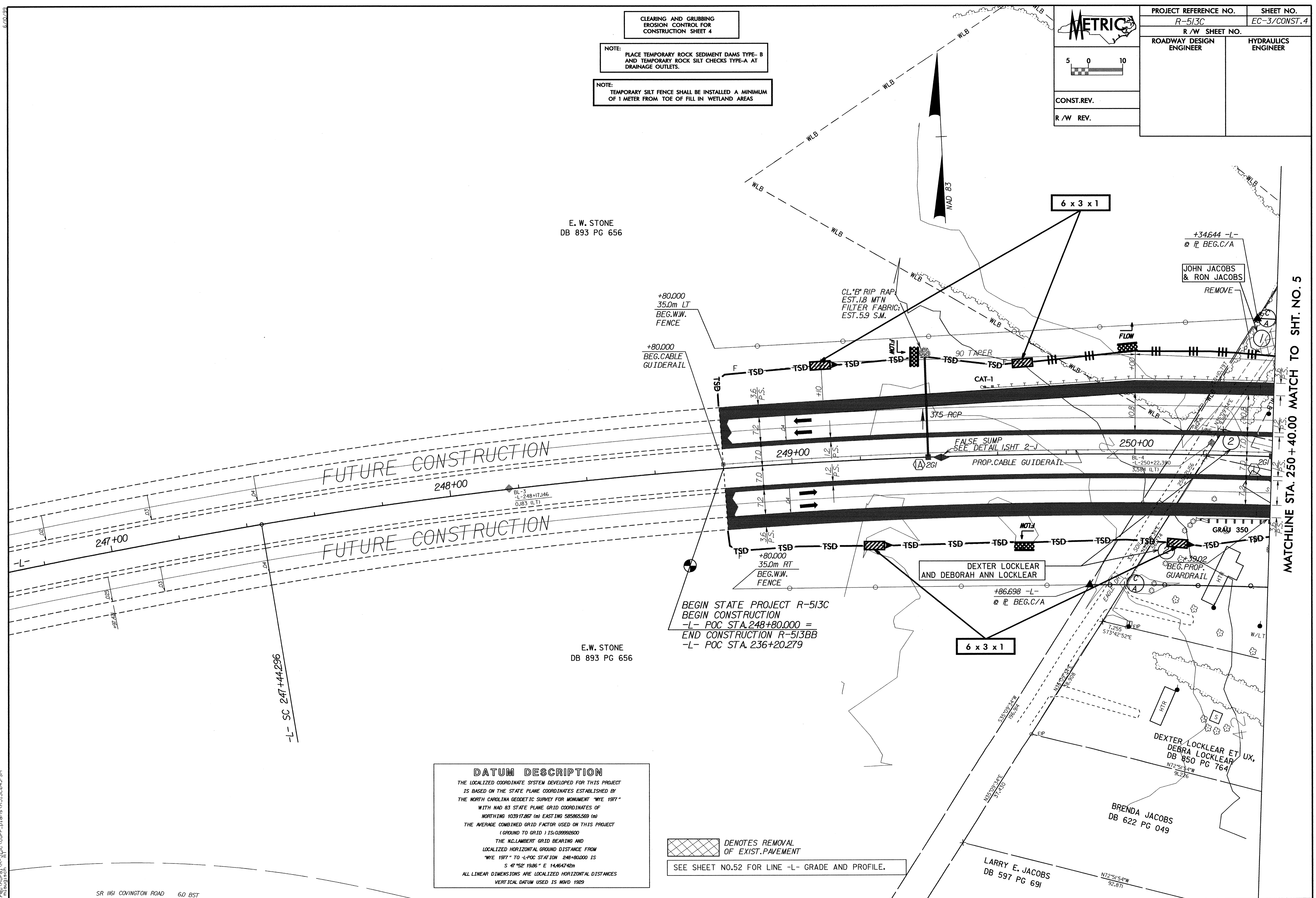
E. W. STONE  
DB 893 PG 656

E.W. STONE  
DB 893 PG 656

**DATUM DESCRIPTION**  
THE LOCALIZED COORDINATE SYSTEM DEVELOPED FOR THIS PROJECT  
IS BASED ON THE STATE PLANE COORDINATES ESTABLISHED BY  
THE NORTH CAROLINA GEODETIC SURVEY FOR MONUMENT "WYE 1977"  
WITH NAD 83 STATE PLANE GRID COORDINATES OF  
NORTHING 103917.867 (m) EASTING 585865.569 (m)  
THE AVERAGE COMBINED GRID FACTOR USED ON THIS PROJECT  
(GROUND TO GRID) IS: 0.99992600  
THE NAD 83 GRID BEARING AND  
LOCALIZED HORIZONTAL GROUND DISTANCE FROM  
"WYE 1977" TO L-POC STATION 248+80.000 IS  
S 47°52' 19.86" E 14,464.742m  
ALL LINEAR DIMENSIONS ARE LOCALIZED HORIZONTAL DISTANCES  
VERTICAL DATUM USED IS MVD 1929

DENOTES REMOVAL  
OF EXIST. PAVEMENT  
SEE SHEET NO.52 FOR LINE -L- GRADE AND PROFILE.

MATCHLINE STA. 250 + 40.00 MATCH TO SHT. NO. 5



09-APP-2004 DCO3  
dr:\u0000\cur\et\p\513c\cur-plans\RS13E04.FSH  
mshajish