

METRIC

PROJECT REFERENCE NO. R-513C SHEET NO. EC-6/CONST.7

R/W SHEET NO.

ROADWAY DESIGN ENGINEER HYDRAULICS ENGINEER

CONST. REV.

R/W REV.

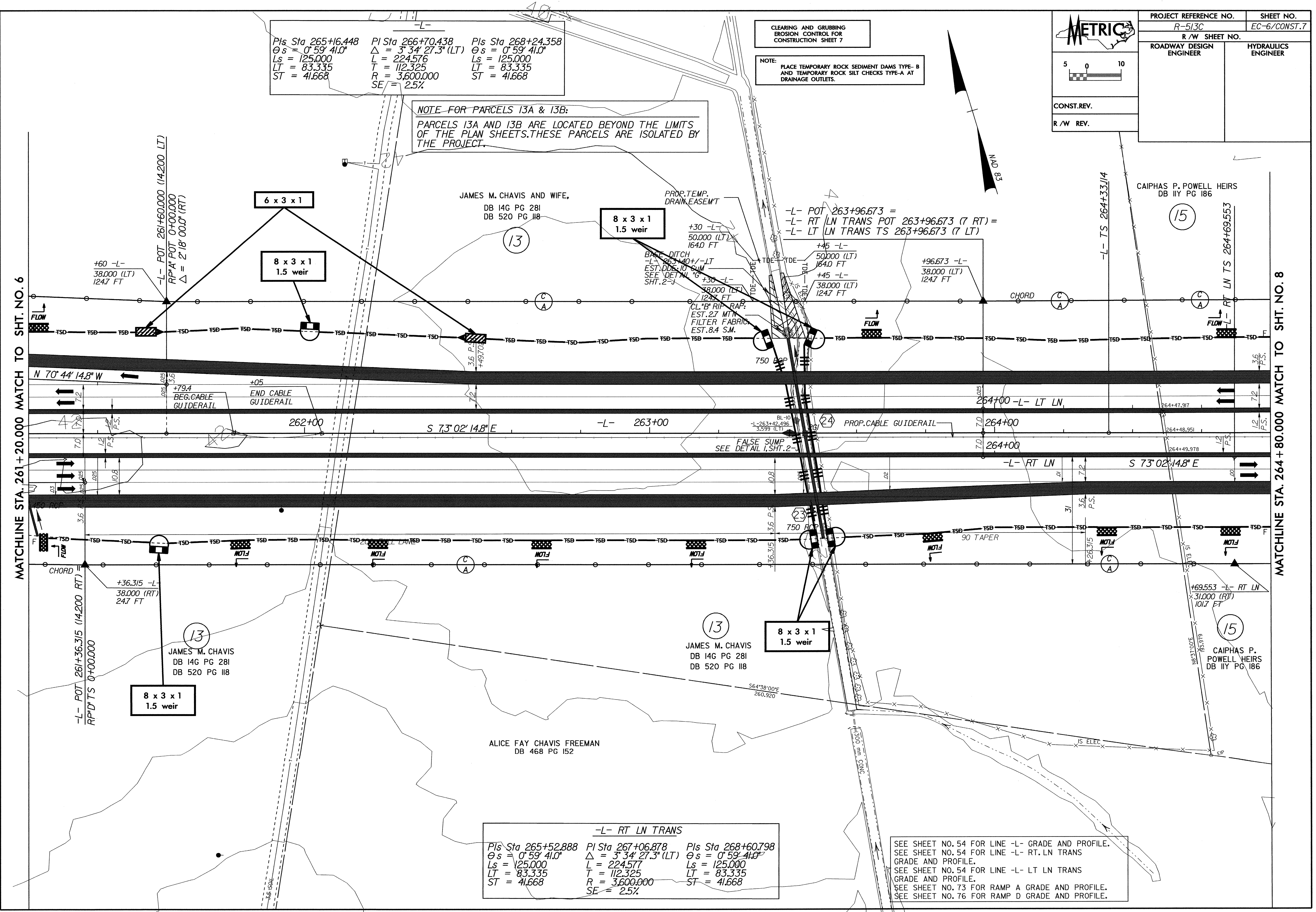
5 0 10

Pls Sta 265+16.448 PI Sta 266+70.438 Pls Sta 268+24.358
 $\theta s = 0^{\circ} 59' 41.0''$ $\Delta = 3^{\circ} 34' 27.3''$ (LT) $\theta s = 0^{\circ} 59' 41.0''$
 $Ls = 125.000$ $L = 224.576$ $Ls = 125.000$
 $LT = 83.335$ $T = 112.325$ $LT = 83.335$
 $ST = 41.668$ $R = 3,600.000$ $ST = 41.668$
 $SE = 2.5\%$

CLEARING AND GRUBBING
 EROSION CONTROL FOR
 CONSTRUCTION SHEET 7

NOTE:
 PLACE TEMPORARY ROCK SEDIMENT DAMS TYPE-B
 AND TEMPORARY ROCK SILT CHECKS TYPE-A AT
 DRAINAGE OUTLETS.

NOTE FOR PARCELS 13A & 13B:
 PARCELS 13A AND 13B ARE LOCATED BEYOND THE LIMITS
 OF THE PLAN SHEETS. THESE PARCELS ARE ISOLATED BY
 THE PROJECT.



MATCHLINE STA. 261+20.000 MATCH TO SHT. NO. 6

MATCHLINE STA. 264+80.000 MATCH TO SHT. NO. 8

-L- RT LN TRANS

Pls Sta 265+52.888 PI Sta 267+06.878 Pls Sta 268+60.798
 $\theta s = 0^{\circ} 59' 41.0''$ $\Delta = 3^{\circ} 34' 27.3''$ (LT) $\theta s = 0^{\circ} 59' 41.0''$
 $Ls = 125.000$ $L = 224.577$ $Ls = 125.000$
 $LT = 83.335$ $T = 112.325$ $LT = 83.335$
 $ST = 41.668$ $R = 3,600.000$ $ST = 41.668$
 $SE = 2.5\%$

SEE SHEET NO. 54 FOR LINE -L- GRADE AND PROFILE.
 SEE SHEET NO. 54 FOR LINE -L- RT. LN TRANS
 GRADE AND PROFILE.
 SEE SHEET NO. 54 FOR LINE -L- LT LN TRANS
 GRADE AND PROFILE.
 SEE SHEET NO. 73 FOR RAMP A GRADE AND PROFILE.
 SEE SHEET NO. 76 FOR RAMP D GRADE AND PROFILE.

09-APR-2004 10:36
 d:\nu\l\re\01\16-26\curr-pl\ans\F513C07.PSH