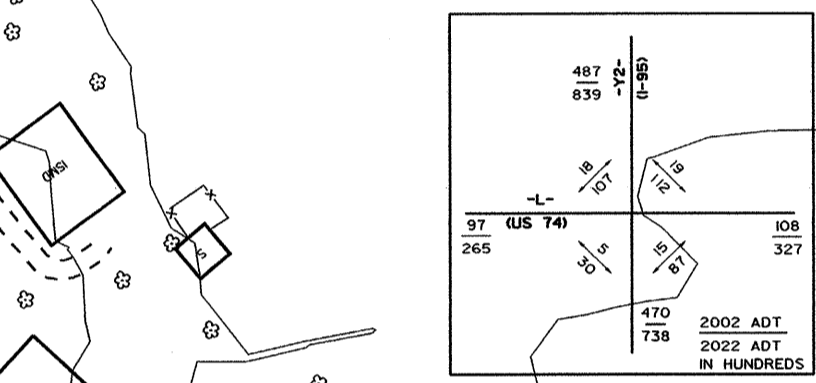
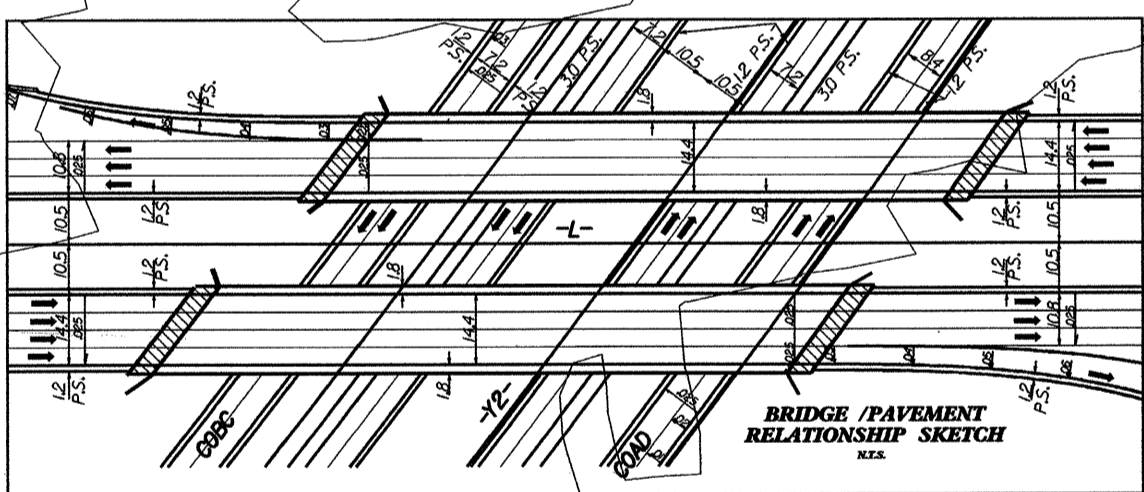


MATCHLINE STA. 272+00.000 MATCH TO SHT. NO. 9

MATCHLINE STA. 279+20.000 MATCH TO SHT. NO. 13



SEE SHEETS S THROUGH-S FOR STRUCTURES PLANS



SEE SHEETS NO. 55 AND NO. 56 FOR LINE -L- GRADE AND PROFILE.
 SEE SHEETS NO. 81 AND NO. 82 FOR RAMP C GRADE AND PROFILE.
 SEE SHEET NO. 82 FOR LOOP C GRADE AND PROFILE.
 SEE SHEETS NO. 83 AND NO. 84 RAMP D GRADE AND PROFILE.
 SEE SHEETS NO. 84 AND 85 LOOP D GRADE AND PROFILE.
 SEE SHEETS NO. 97 AND NO. 98 FOR -Y2- RT LN & -Y2- LT LN GRADES AND PROFILES.
 SEE SHEETS NO. 104 AND NO. 105 FOR COAD GRADE AND PROFILE.
 SEE SHEETS NO. 106 AND NO. 109 FOR COB2 GRADE AND PROFILE.

DENOTES REMOVAL OF EXIST. PAVEMENT

COAD			COB2			LOOP C			RAMP 12			RAMP 13			
Pile Sta 24+997.25	Pile Sta 25+181.55	Pile Sta 36+330.289	Pile Sta 25+103.567	Pile Sta 28+777.312	Pile Sta 36+518.94	Pile Sta 0+606.69	Pile Sta 1+527.50	Pile Sta 4+517.81	Pile Sta 4+295.96	Pile Sta 25+103.237	Pile Sta 28+190.988	Pile Sta 38+329.987	Pile Sta 14+008.3	Pile Sta 5+284.73	Pile Sta 6+476.683
$\Delta = 0^{\circ} 55' 55.5''$	$\Delta = 12^{\circ} 57' 38.8''$ (RT)	$\Delta = 14^{\circ} 09' 16.0''$ (RT)	$\Delta = 0^{\circ} 56' 31.6''$	$\Delta = 14^{\circ} 09' 02.7''$ (RT)	$\Delta = 14^{\circ} 09' 13.2''$ (RT)	$\Delta = 25^{\circ} 46' 58.2''$	$\Delta = 67^{\circ} 00' 00.0''$ (LT)	$\Delta = 112^{\circ} 30' 51.9''$ (LT)	$\Delta = 25^{\circ} 34' 32.9''$	$\Delta = 0^{\circ} 55' 13.4''$	$\Delta = 12^{\circ} 57' 20.9''$ (RT)	$\Delta = 21^{\circ} 07' 45.0''$ (RT)	$\Delta = 0^{\circ} 56' 17.5''$	$\Delta = 11^{\circ} 30' 37.1''$ (RT)	$\Delta = 11^{\circ} 30' 37.1''$ (RT)
L = 60.000	L = 60.000	L = 60.000	L = 60.000	L = 60.000	L = 60.000	L = 60.000	L = 60.000	L = 60.000	L = 60.000	L = 60.000	L = 60.000	L = 60.000	L = 60.000	L = 60.000	L = 60.000
TI = 60.000	TI = 60.000	TI = 60.000	TI = 60.000	TI = 60.000	TI = 60.000	TI = 60.000	TI = 60.000	TI = 60.000	TI = 60.000	TI = 60.000	TI = 60.000	TI = 60.000	TI = 60.000	TI = 60.000	TI = 60.000
ST = 33.54	ST = 33.54	ST = 33.54	ST = 33.54	ST = 33.54	ST = 33.54	ST = 33.54	ST = 33.54	ST = 33.54	ST = 33.54	ST = 33.54	ST = 33.54	ST = 33.54	ST = 33.54	ST = 33.54	ST = 33.54
SE = 2.5%	SE = 2.5%	SE = 2.5%	SE = 2.5%	SE = 2.5%	SE = 2.5%	SE = 2.5%	SE = 2.5%	SE = 2.5%	SE = 2.5%	SE = 2.5%	SE = 2.5%	SE = 2.5%	SE = 2.5%	SE = 2.5%	SE = 2.5%

PROJECT REFERENCE NO.	SHEET NO.
R-313C	EC-42/CONST 11
R/W SHEET NO.	
CONST. REV.	R/W REV.