

LOOP "K"			
PI Sta 0+60.489	PI Sta 2+38.865	PI Sta 4+10.992	PI Sta 5+07.008
$\Delta = 22.25' (2.3)$	$\Delta = 18.43' (1.7)$	$\Delta = 27.53' (2.7)$	$\Delta = 25.25' (2.3)$
$L = 50.000$	$L = 20.000$	$L = 76.563$	$L = 50.000$
$IT = 50.499$	$IT = 14.998$	$IT = 10.583$	$IT = 50.499$
$ST = 30.444$	$ST = 15.000$	$ST = 16.000$	$ST = 30.444$
	$SE = 8X$	$SE = 8X$	

RAMP "K"		
PI Sta 0+72.555	PI Sta 7+19.995	PI Sta 8+10.005
$\Delta = 6.47' (0.6)$	$\Delta = 11.74' (1.1)$	$\Delta = 8.47' (0.8)$
$L = 50.000$	$L = 68.540$	$L = 50.000$
$IT = 50.499$	$IT = 60.495$	$IT = 60.004$
$ST = 30.444$	$ST = 38.000$	$ST = 30.444$
	$SE = 7X$	

CLASSIFY AND GRADING  
SECTION CONTROL FOR  
CONSTRUCTION SHEET 13

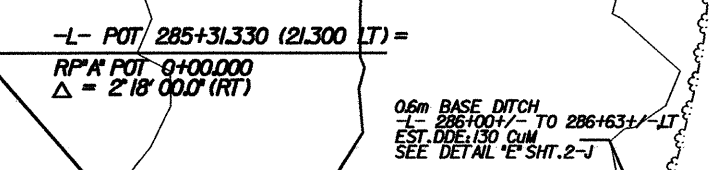
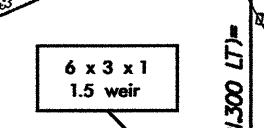
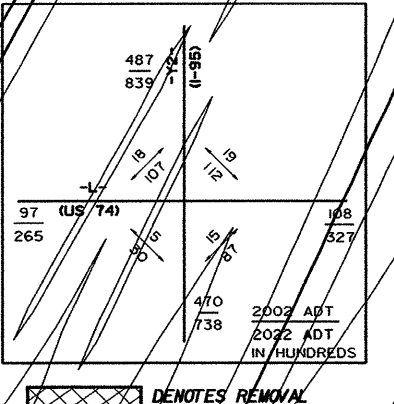
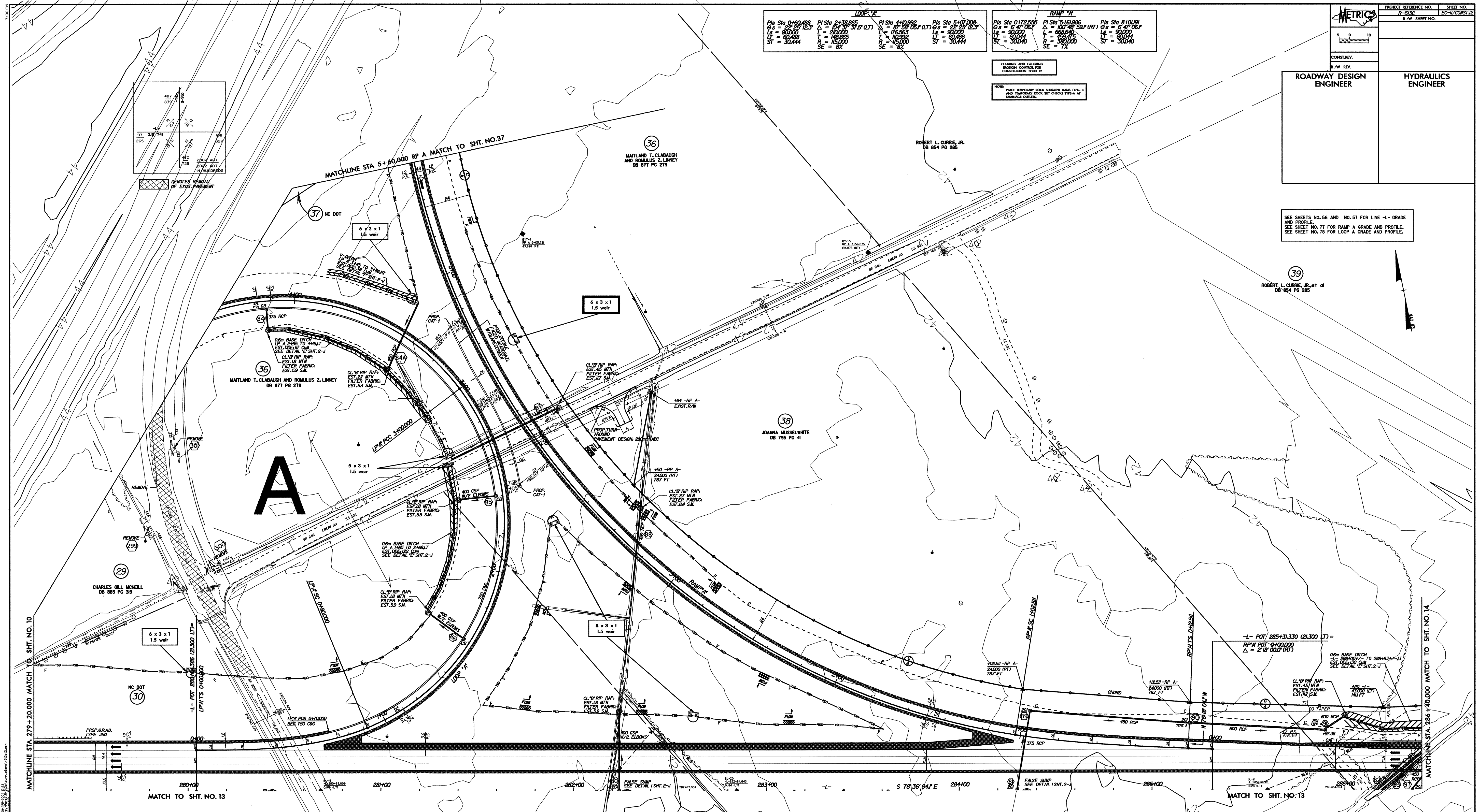
NOTE:  
FACE TEMPORARY ROCK SHIELDS DURING TRIP-8  
AND TEMPORARY ROCK SET CHECKS TRIP-8 AT  
DRAINAGE OUTLETS.

PROJECT REFERENCE NO. R-5130	SHEET NO. EC-17/CONST 22
R/W SHEET NO.	

CONST. REV.

R/W REV.	
ROADWAY DESIGN ENGINEER	HYDRAULICS ENGINEER

SEE SHEETS NO. 56 AND NO. 57 FOR LINE -L- GRADE  
AND PROFILE.  
SEE SHEET NO. 77 FOR RAMP A GRADE AND PROFILE.  
SEE SHEET NO. 78 FOR LOOP A GRADE AND PROFILE.



DATE PLOTTED: 08/20/2013 10:00 AM