

METRIC

CONST. REV.
R/W REV.

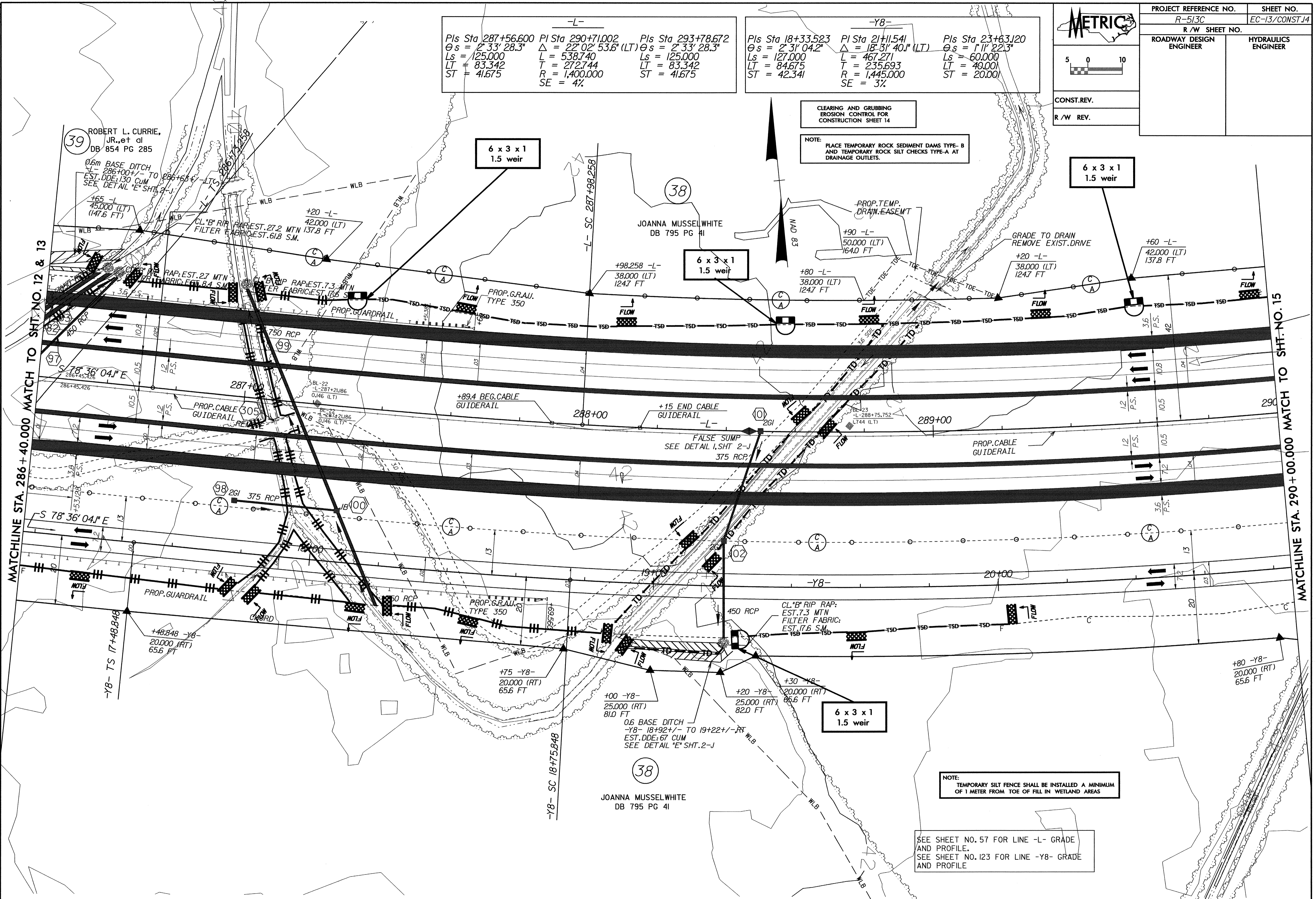
PROJECT REFERENCE NO. R-513C	SHEET NO. EC-13/CONST.14
R/W SHEET NO.	
ROADWAY DESIGN ENGINEER	HYDRAULICS ENGINEER

-L-

Pls Sta 287+56.600	PI Sta 290+71.002	Pls Sta 293+78.672
$\theta_s = 2' 33'' 28.3''$	$\Delta = 22' 02'' 53.6''$ (LT)	$\theta_s = 2' 33'' 28.3''$
$L_s = 125.000$	$L = 538.740$	$L_s = 125.000$
$LT = 83.342$	$T = 272.744$	$LT = 83.342$
$ST = 41.675$	$R = 1,400.000$	$ST = 41.675$
	$SE = 4\%$	

-Y8-

Pls Sta 18+33.523	PI Sta 21+11.541	Pls Sta 23+63.120
$\theta_s = 2' 31'' 04.2''$	$\Delta = 18' 51'' 40.1''$ (LT)	$\theta_s = 1' 11'' 22.3''$
$L_s = 127.000$	$L = 467.271$	$L_s = 60.000$
$LT = 84.675$	$T = 235.693$	$LT = 40.000$
$ST = 42.341$	$R = 1,445.000$	$ST = 20.000$
	$SE = 3\%$	



CLEARING AND GRUBBING
EROSION CONTROL FOR
CONSTRUCTION SHEET 14

NOTE:
PLACE TEMPORARY ROCK SEDIMENT DAMS TYPE-B
AND TEMPORARY ROCK SILT CHECKS TYPE-A AT
DRAINAGE OUTLETS.

NOTE:
TEMPORARY SILT FENCE SHALL BE INSTALLED A MINIMUM
OF 1 METER FROM TOE OF FILL IN WETLAND AREAS

SEE SHEET NO. 57 FOR LINE -L- GRADE
AND PROFILE.
SEE SHEET NO. 123 FOR LINE -Y8- GRADE
AND PROFILE

09-APR-2004 12:04
d:\mca\cur\p\13c\cur\p\lana\513c14.psh