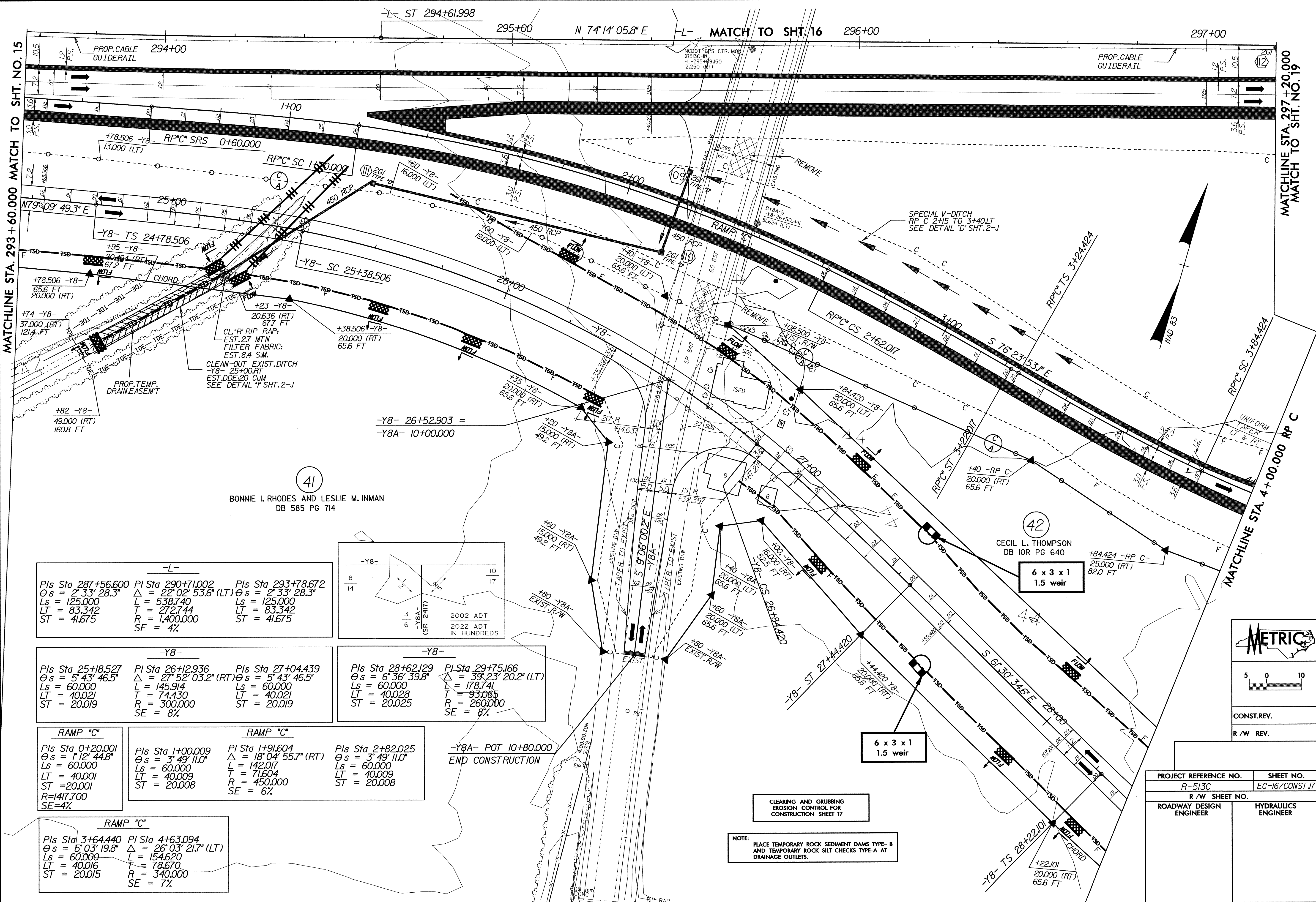
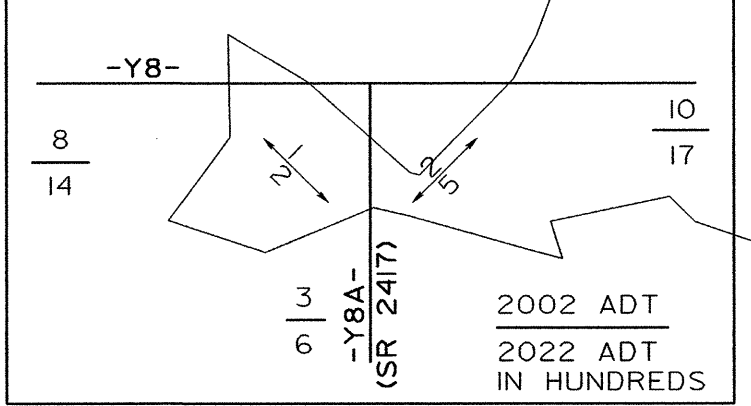


09-APR-2004 14:04
 dr:\pba\user\pl\ec\ecurr-pl\ena\RS13C17.FSH
 6/10/08



-L-		
Pls Sta 287+56.600 θs = 2° 33' 28.3" Ls = 125.000 LT = 83.342 ST = 41.675	Pls Sta 290+71.002 Δ = 22° 02' 53.6" (LT) L = 538.740 T = 272.744 R = 1,400.000 SE = 4%	Pls Sta 293+78.672 θs = 2° 33' 28.3" Ls = 125.000 LT = 83.342 ST = 41.675



-Y8-		
Pls Sta 25+18.527 θs = 5° 43' 46.5" Ls = 60.000 LT = 40.021 ST = 20.019	Pls Sta 26+12.936 Δ = 27° 52' 03.2" (RT) L = 145.914 T = 74.430 R = 300.000 SE = 8%	Pls Sta 27+04.439 θs = 5° 43' 46.5" Ls = 60.000 LT = 40.021 ST = 20.019

-Y8-	
Pls Sta 28+62.129 θs = 6° 36' 39.8" Ls = 60.000 LT = 40.028 ST = 20.025	Pls Sta 29+75.166 Δ = 39° 23' 20.2" (LT) L = 178.741 T = 93.065 R = 260.000 SE = 8%

RAMP "C"	
Pls Sta 0+20.001 θs = 1° 12' 44.8" Ls = 60.000 LT = 40.001 ST = 20.001 R = 147.700 SE = 4%	Pls Sta 1+00.009 θs = 3° 49' 11.0" Ls = 60.000 LT = 40.009 ST = 20.008

RAMP "C"	
Pls Sta 1+91.604 Δ = 18° 04' 55.7" (RT) L = 142.017 T = 71.604 R = 450.000 SE = 6%	Pls Sta 2+82.025 θs = 3° 49' 11.0" Ls = 60.000 LT = 40.009 ST = 20.008

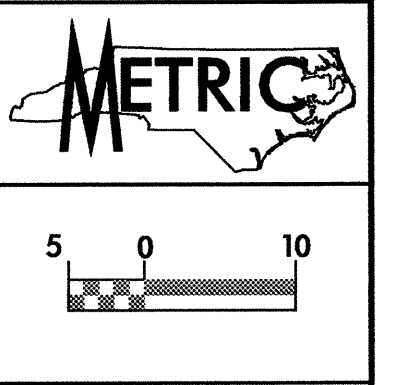
RAMP "C"	
Pls Sta 3+64.440 θs = 5° 03' 19.8" Ls = 60.000 LT = 40.016 ST = 20.015	Pls Sta 4+63.094 Δ = 26° 03' 21.7" (LT) L = 154.620 T = 78.670 R = 340.000 SE = 7%

-Y8A- POT 10+80.000
END CONSTRUCTION

CLEARING AND GRUBBING
EROSION CONTROL FOR
CONSTRUCTION SHEET 17

NOTE:
PLACE TEMPORARY ROCK SEDIMENT DAMS TYPE- B
AND TEMPORARY ROCK SILT CHECKS TYPE-A AT
DRAINAGE OUTLETS.

PROJECT REFERENCE NO. R-513C	SHEET NO. EC-16/CONST.17
R/W SHEET NO.	
ROADWAY DESIGN ENGINEER	HYDRAULICS ENGINEER



CONST. REV.
R/W REV.

BONNIE I. RHODES AND LESLIE M. INMAN
DB 585 PG 714

CECIL L. THOMPSON
DB IOR PG 640
6 x 3 x 1
1.5 weir

6 x 3 x 1
1.5 weir

MATCHLINE STA. 297+20.000
MATCH TO SHT. NO. 19

MATCHLINE STA. 293+60.000
MATCH TO SHT. NO. 15