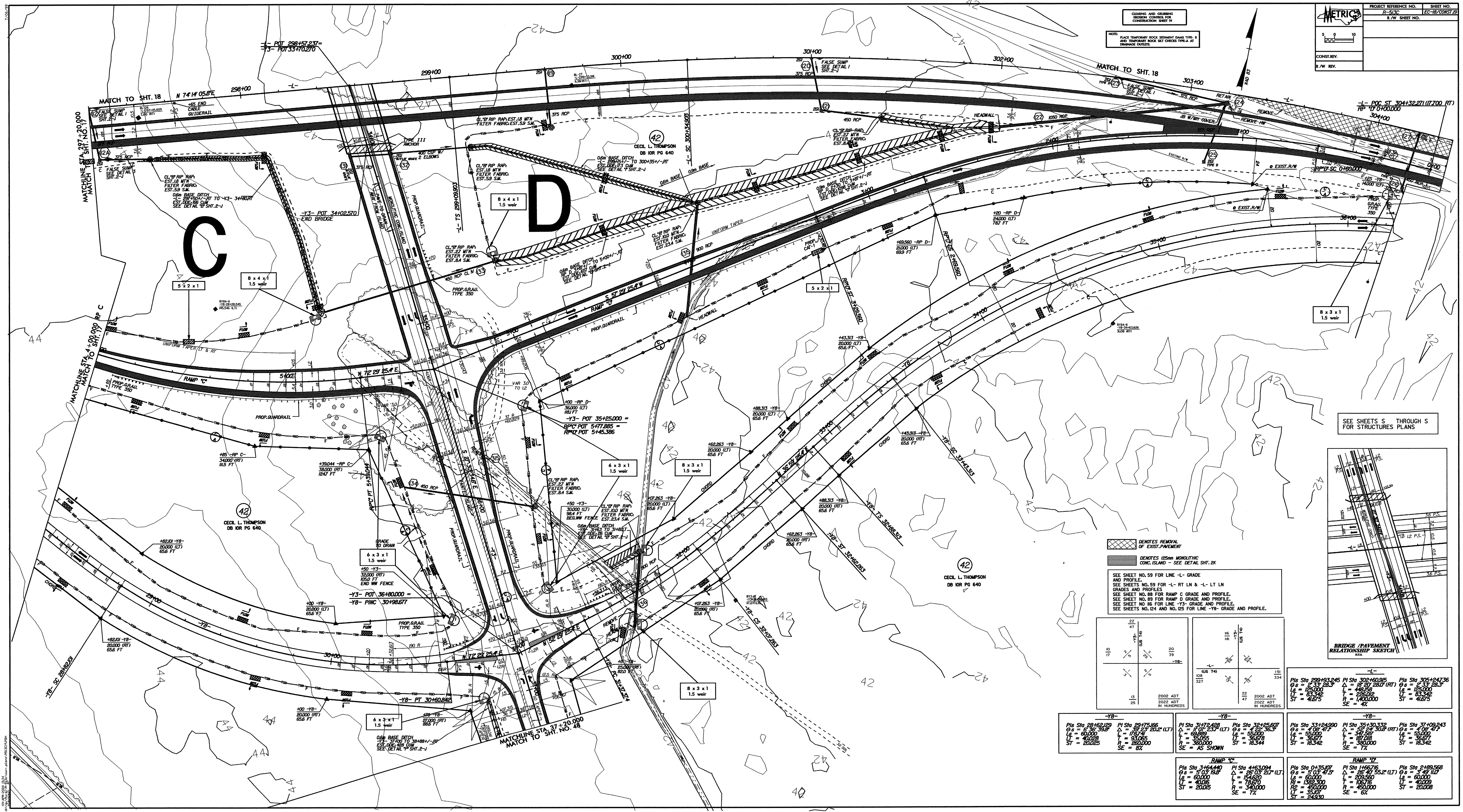
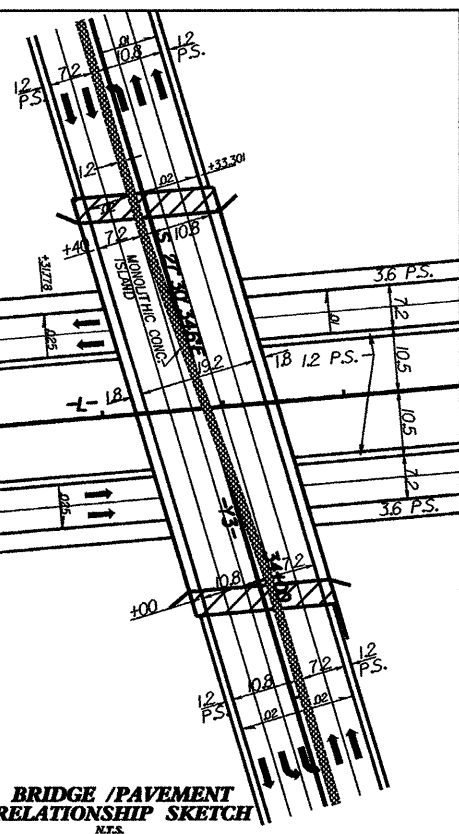


CLEANING AND GRUBBING
 BEFORE CONSTRUCTION
 CONSTRUCTION SHEET 19

NOTE: PLACE TEMPORARY ROCK STRENGTH BAND TYPE 1
 AND TEMPORARY ROCK SET CHECKS TYPE-A AT
 BRIDGE GUTTERS.



SEE SHEETS S THROUGH S
 FOR STRUCTURES PLANS



SEE SHEET NO. 59 FOR LINE -L- GRADE
 AND PROFILE.
 SEE SHEETS NO. 59 FOR -L- RT LN & -L- LT LN
 GRADES AND PROFILES.
 SEE SHEET NO. 88 FOR RAMP C GRADE AND PROFILE.
 SEE SHEET NO. 89 FOR RAMP D GRADE AND PROFILE.
 SEE SHEET NO. 86 FOR LINE -Y3- GRADE AND PROFILE.
 SEE SHEETS NO. 124 AND NO. 125 FOR LINE -Y8- GRADE AND PROFILE.

22 47 % 10	20 39 % 15	16 16 % 10	14 14 % 10
2002 ADT IN HUNDREDS	2002 ADT IN HUNDREDS	2002 ADT IN HUNDREDS	2002 ADT IN HUNDREDS

-Y8- Pile Sta 28+62.029 Δs = 6.36' 39.8" L = 64.00' LT = 40.02' ST = 20.225	-Y8- Pile Sta 29+75.166 Δs = 18.27' 20.2" (LT) L = 83.05' LT = 29.000 ST = 8X	-Y8- Pile Sta 31+72.428 Δs = 11.07' 23.7" (LT) L = 59.86' LT = 35.65' ST = AS SHOWN	-Y8- Pile Sta 32+25.607 Δs = 6.27' 36.3" L = 59.86' LT = 35.65' ST = 12.34	-Y8- Pile Sta 33+42.990 Δs = 23.37' 28.3" L = 124.00' LT = 93.875' ST = 4X	-Y8- Pile Sta 35+30.332 Δs = 37.55' 30.8" (RT) L = 375.00' LT = 180.00' ST = 7X	-Y8- Pile Sta 37+09.243 Δs = 23.37' 28.3" L = 124.00' LT = 93.875' ST = 4X
RAMP C Pile Sta 31+64.410 Δs = 5.03' 19.8" L = 64.00' LT = 40.06' ST = 20.015	RAMP D Pile Sta 41+63.094 Δs = 26.03' 21.7" (LT) L = 146.80' LT = 78.870 ST = 7X	RAMP C Pile Sta 0+15.07 Δs = 5.03' 47.5" L = 64.00' LT = 35.000 ST = 24.930	RAMP D Pile Sta 1+166.716 Δs = 26.03' 25.2" (LT) L = 146.80' LT = 78.870 ST = 6X	RAMP C Pile Sta 2+199.568 Δs = 5.47' 11.7" L = 64.00' LT = 40.009 ST = 20.008		