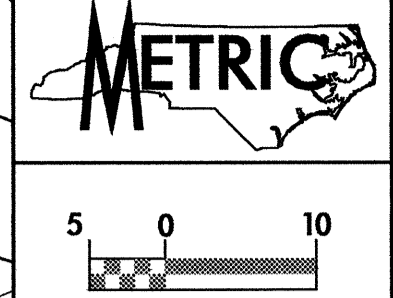
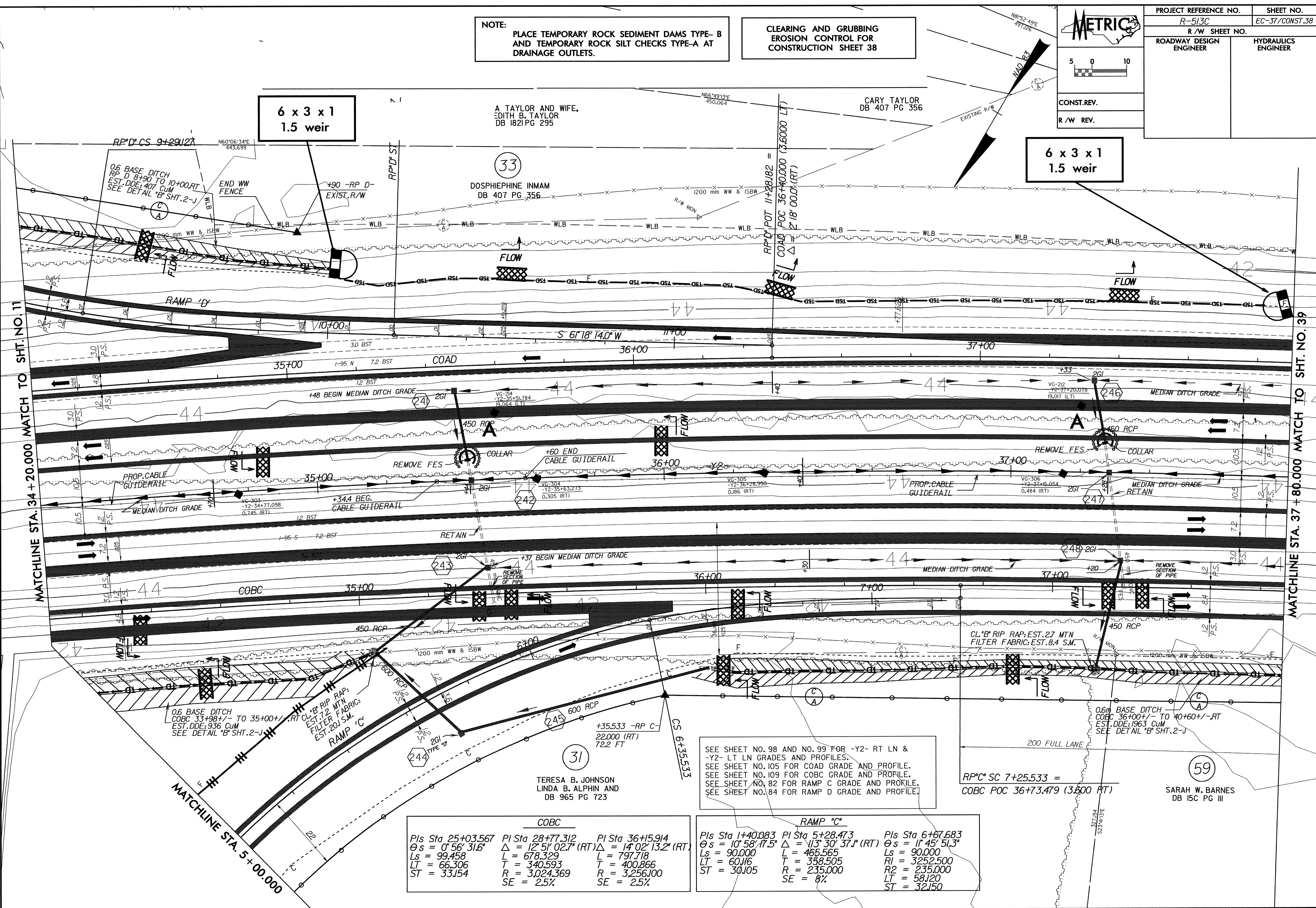


PROJECT REFERENCE NO.	SHEET NO.
R-513C	EC-37/CONST.38
R/W SHEET NO.	
ROADWAY DESIGN ENGINEER	HYDRAULICS ENGINEER
CONST. REV.	
R/W REV.	



NOTE:
PLACE TEMPORARY ROCK SEDIMENT DAMS TYPE-B AND TEMPORARY ROCK SILT CHECKS TYPE-A AT DRAINAGE OUTLETS.

CLEARING AND GRUBBING EROSION CONTROL FOR CONSTRUCTION SHEET 38



**6 x 3 x 1
1.5 weir**

**6 x 3 x 1
1.5 weir**

COBC

PI Sta 25+03.567	PI Sta 28+77.312	PI Sta 36+15.914
$\theta s = 0^{\circ} 56' 31.6''$	$\Delta = 12^{\circ} 51' 02.7''$ (RT)	$\Delta = 14^{\circ} 02' 13.2''$ (RT)
Ls = 99.458	L = 678.329	L = 797.718
LT = 66.306	T = 340.593	T = 400.866
ST = 33.154	R = 3,024.369	R = 3,256.100
	SE = 2.5%	SE = 2.5%

RAMP "C"

PI Sta 1+40.083	PI Sta 5+28.473	PI Sta 6+67.683
$\theta s = 10^{\circ} 58' 17.5''$	$\Delta = 113^{\circ} 30' 37.1''$ (RT)	$\theta s = 11^{\circ} 45' 51.3''$
Ls = 90.000	L = 465.565	Ls = 90.000
LT = 60.116	T = 358.505	RI = 3252.500
ST = 30.105	R = 235.000	R2 = 235.000
	SE = 8%	LT = 58.120
		ST = 32.150

SEE SHEET NO. 98 AND NO. 99 FOR -Y2- RT LN & -Y2- LT LN GRADES AND PROFILES.
SEE SHEET NO. 105 FOR COAD GRADE AND PROFILE.
SEE SHEET NO. 109 FOR COBC GRADE AND PROFILE.
SEE SHEET NO. 82 FOR RAMP C GRADE AND PROFILE.
SEE SHEET NO. 84 FOR RAMP D GRADE AND PROFILE.

RP"C SC 7+25.533 =
COBC POC 36+73.479 (3.600 RT)

SARAH W. BARNES
DB 15C PG III

12-APR-2004 07:30
d:\au\lucy\p1\130\curr-plans\130338.PSH