

6/10/93

-Y3-

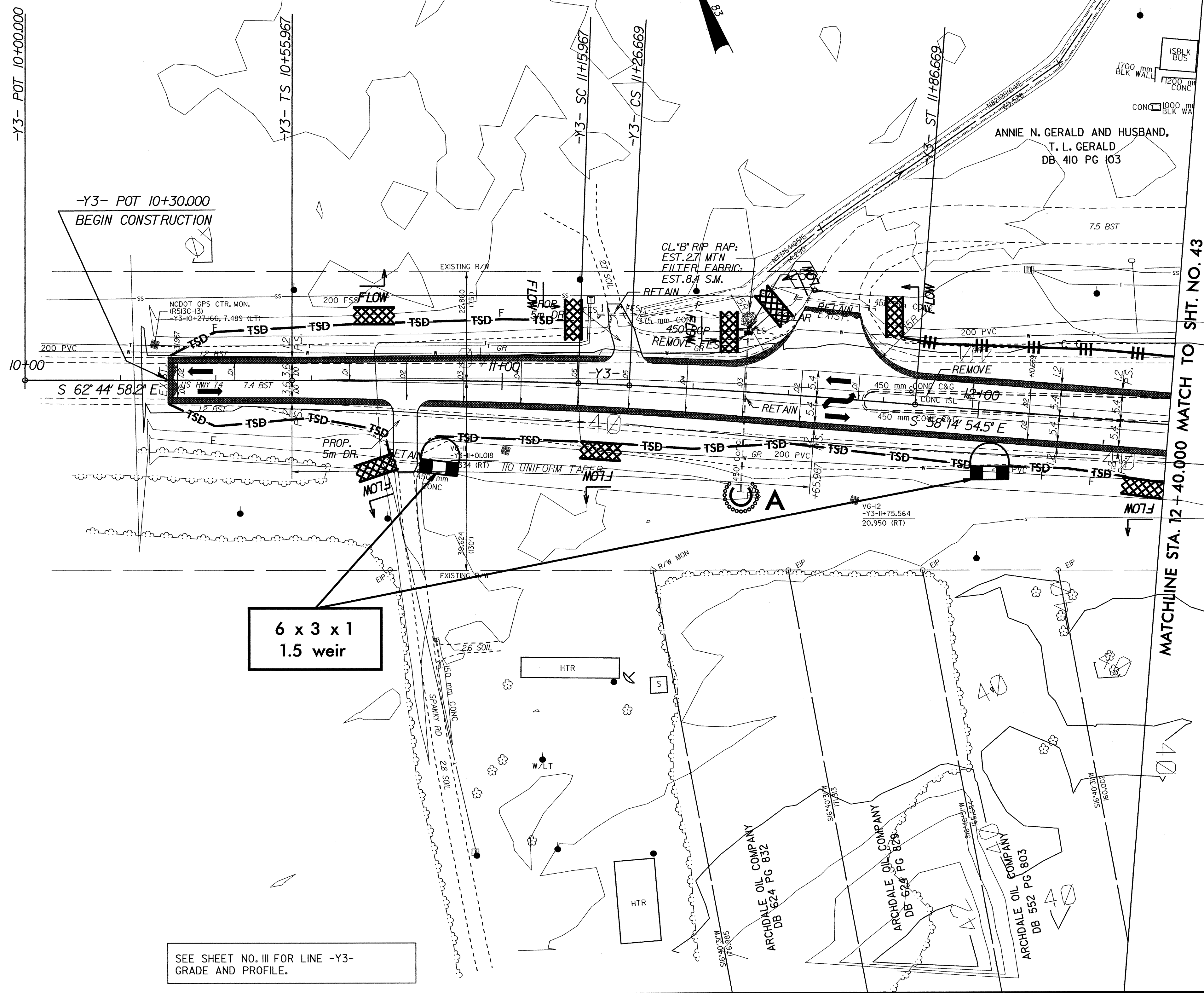
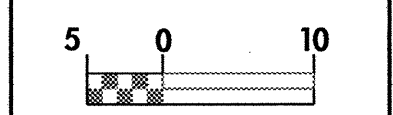
Pls Sta. 10+95.970	Pl Sta. 11+21.318	Pls Sta. 11+46.671
$\theta_s = 1^\circ 54' 35.5''$	$\Delta = 0^\circ 40' 52.7''$ (RT)	$\theta_s = 1^\circ 54' 35.5''$
$L_s = 60.000$	$L = 10.702$	$L_s = 60.000$
$LT = 40.002$	$T = 5.351$	$LT = 40.002$
$ST = 20.002$	$R = 900.000$	$ST = 20.002$
	$SE = .05$	

CLEARING AND GRUBBING
EROSION CONTROL FOR
CONSTRUCTION SHEET 42



PROJECT REFERENCE NO. R-513C	SHEET NO. EC-41/CONST.42
R / W SHEET NO.	
ROADWAY DESIGN ENGINEER	HYDRAULICS ENGINEER
CONST. REV.	
R / W REV.	

NOTE:
PLACE TEMPORARY ROCK SEDIMENT DAMS TYPE-B
AND TEMPORARY ROCK SILT CHECKS TYPE-A AT
DRAINAGE OUTLETS.



12-APR-2004 08:21
 \\plains\plains\RF513C\2.F54
 mlaughsch