

**METRIC**

5 0 10

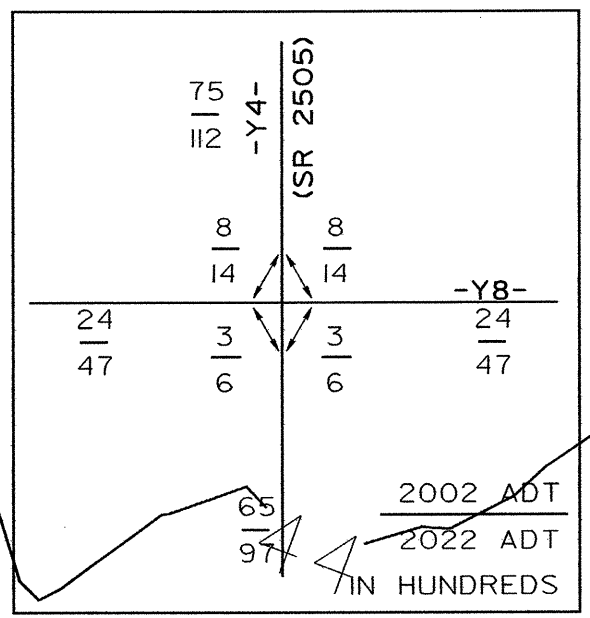
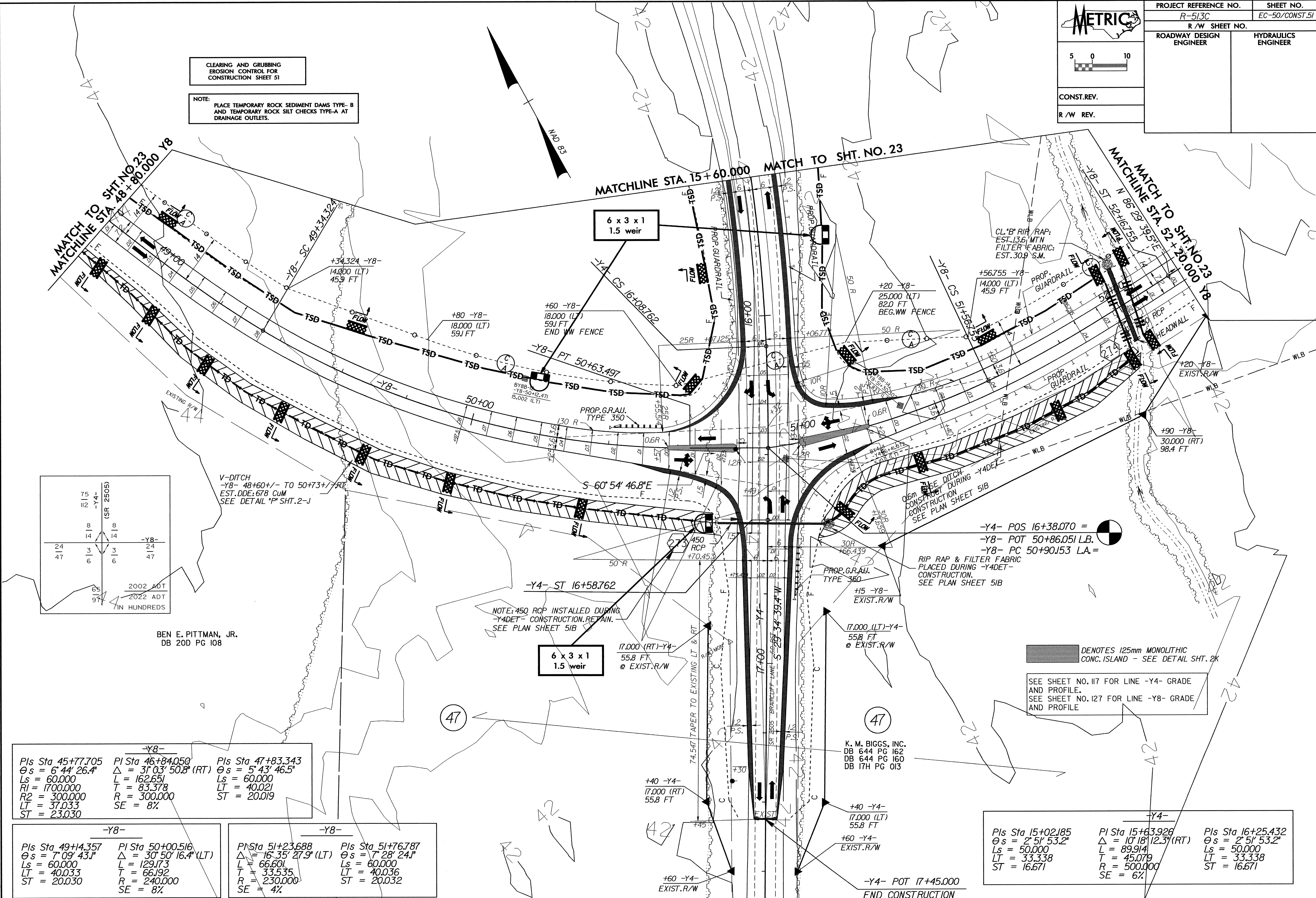
|  |                                    |
|--|------------------------------------|
| PROJECT REFERENCE NO.<br><i>R-513C</i> | SHEET NO.<br><i>EC-50/CONST.51</i> |
| R/W SHEET NO.                          |                                    |
| ROADWAY DESIGN ENGINEER                | HYDRAULICS ENGINEER                |

CONST.REV.

R/W REV.

CLEARING AND GRUBBING  
EROSION CONTROL FOR  
CONSTRUCTION SHEET 51

NOTE:  
PLACE TEMPORARY ROCK SEDIMENT DAMS TYPE-B  
AND TEMPORARY ROCK SILT CHECKS TYPE-A AT  
DRAINAGE OUTLETS.



V-DITCH  
-Y8- 48+60 +/- TO 50+73 +/- RT  
EST. DDE: 678 CuM  
SEE DETAIL "P" SHT. 2-J

-Y4- POS 16+38.070 =  
-Y8- POT 50+86.051 L.B.  
-Y8- PC 50+90.153 LA =

NOTE: 450 RCP INSTALLED DURING  
-Y4DET- CONSTRUCTION. RETAIN.  
SEE PLAN SHEET 51B

BEN E. PITTMAN, JR.  
DB 200 PG 108

**-Y8-**

|  |  |   |
|--|--|---|
| PIs Sta 45+77.705<br>θs = 6°44'26.4"<br>Ls = 60.000<br>R1 = 1700.000<br>R2 = 300.000<br>LT = 37.033<br>ST = 23.030 | PIs Sta 46+84.050<br>Δ = 31°03'50.8" (RT)<br>L = 162.651<br>T = 83.378<br>R = 300.000<br>SE = 8% | PIs Sta 47+83.343<br>θs = 5°43'46.5"<br>Ls = 60.000<br>LT = 40.021<br>ST = 20.019 |
|--|--|---|

**-Y8-**

|   |  |
|---|--|
| PIs Sta 49+14.357<br>θs = 7°09'43.1"<br>Ls = 60.000<br>LT = 40.033<br>ST = 20.030 | PIs Sta 50+00.516<br>Δ = 30°50'16.4" (LT)<br>L = 129.173<br>T = 66.192<br>R = 240.000<br>SE = 8% |
|---|--|

**-Y8-**

|   |   |
|---|---|
| PIs Sta 51+23.688<br>Δ = 16°35'27.9" (LT)<br>L = 66.601<br>T = 33.535<br>R = 230.000<br>SE = 4% | PIs Sta 51+76.787<br>θs = 7°28'24.1"<br>Ls = 60.000<br>LT = 40.036<br>ST = 20.032 |
|---|---|

**-Y4-**

|   |   |   |
|---|---|---|
| PIs Sta 15+02.185<br>θs = 2°51'53.2"<br>Ls = 50.000<br>LT = 33.338<br>ST = 16.671 | PIs Sta 15+63.928<br>Δ = 10°18'12.3" (RT)<br>L = 89.914<br>T = 45.079<br>R = 500.000<br>SE = 6% | PIs Sta 16+25.432<br>θs = 2°51'53.2"<br>Ls = 50.000<br>LT = 33.338<br>ST = 16.671 |
|---|---|---|