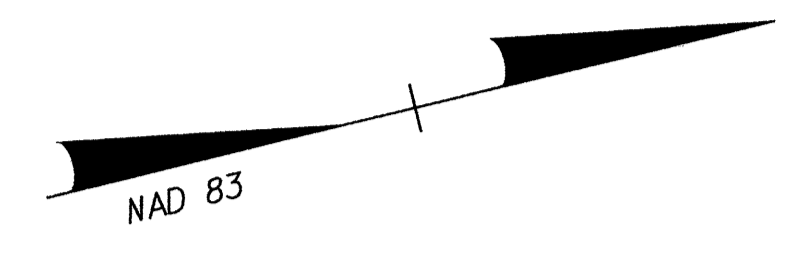
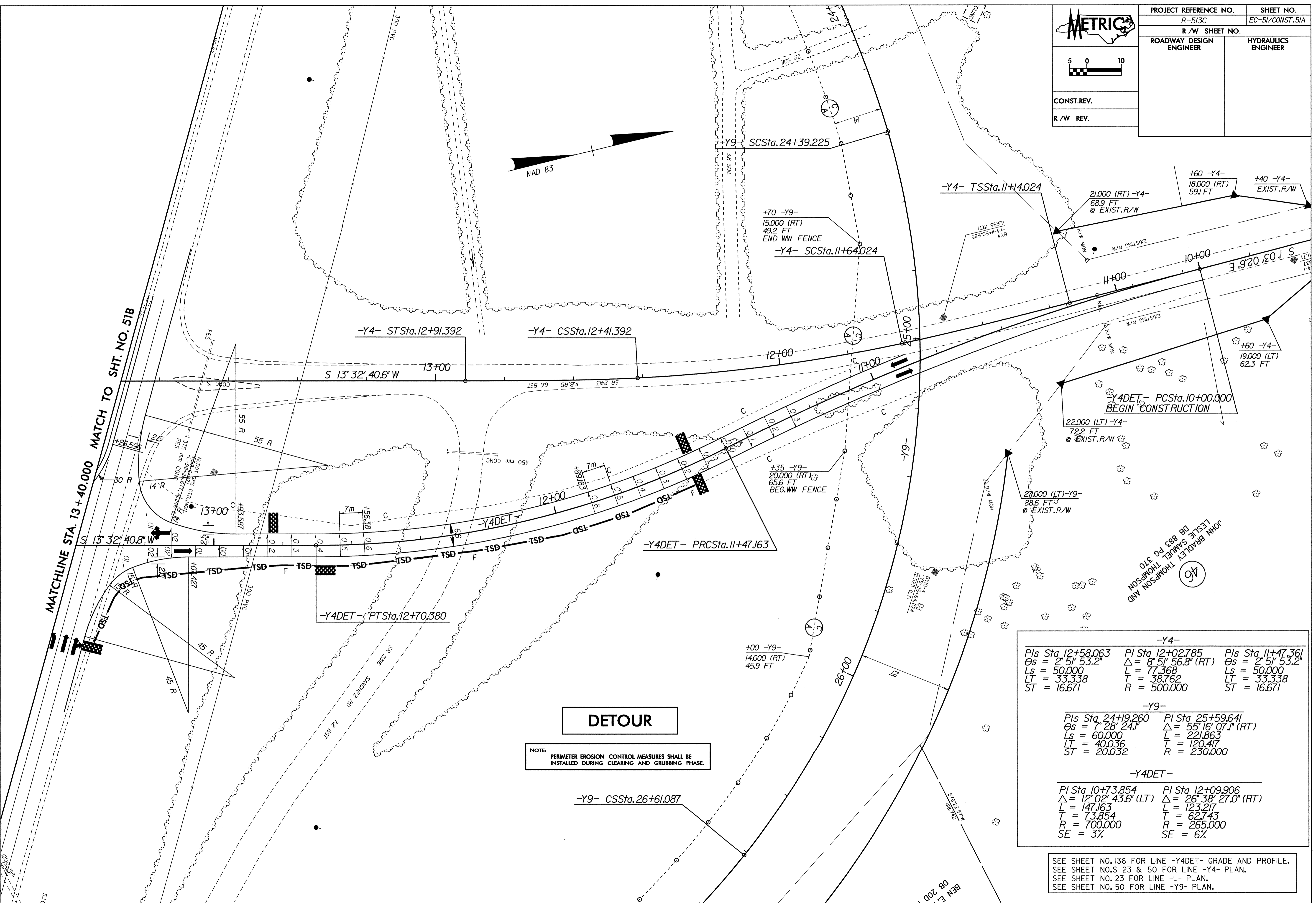
 5 0 10 CONST. REV. R/W REV.	PROJECT REFERENCE NO.	SHEET NO.
	R-513C	EC-51/CONST.51A
ROADWAY DESIGN ENGINEER	R/W SHEET NO.	
HYDRAULICS ENGINEER		



MATCHLINE STA. 13+40.000 MATCH TO SHT. NO. 51B



**DETOUR**

NOTE: PERIMETER EROSION CONTROL MEASURES SHALL BE INSTALLED DURING CLEARING AND GRUBBING PHASE.

-Y4-		
PIs Sta 12+58.063 Os = 2' 51' 53.2" Ls = 50.000 LT = 33.338 ST = 16.671	PI Sta 12+02.785 Δ = 8' 51' 56.8" (RT) L = 77.368 T = 38.762 R = 500.000	PIs Sta 11+47.361 Os = 2' 51' 53.2" Ls = 50.000 LT = 33.338 ST = 16.671
-Y9-		
PIs Sta 24+19.260 Os = 7' 28' 24.1" Ls = 60.000 LT = 40.036 ST = 20.032	PI Sta 25+59.641 Δ = 55' 16' 07.1" (RT) L = 221.863 T = 120.417 R = 230.000	
-Y4DET-		
PI Sta 10+73.854 Δ = 12' 02' 43.6" (LT) L = 147.163 T = 73.854 R = 700.000 SE = 3%	PI Sta 12+09.906 Δ = 26' 38' 27.0" (RT) L = 123.217 T = 62.743 R = 265.000 SE = 6%	

SEE SHEET NO. 136 FOR LINE -Y4DET- GRADE AND PROFILE.  
 SEE SHEET NO. S 23 & 50 FOR LINE -Y4- PLAN.  
 SEE SHEET NO. 23 FOR LINE -L- PLAN.  
 SEE SHEET NO. 50 FOR LINE -Y9- PLAN.

12-APR-2004 10:31  
 C:\Users\mre11\Documents\12-513c\curr-plans\RB13c51a.PSH  
 51/0