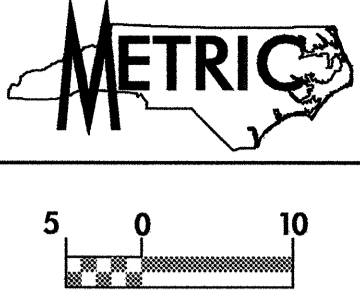


PROJECT REFERENCE NO. R-513C		SHEET NO. EC-53/CONST.4
R/W SHEET NO.		
ROADWAY DESIGN ENGINEER	HYDRAULICS ENGINEER	
CONST.REV.		
R/W REV.		



NOTE:
TEMPORARY SILT FENCE SHALL BE INSTALLED A MINIMUM OF 1 METER FROM TOE OF FILL IN WETLAND AREAS

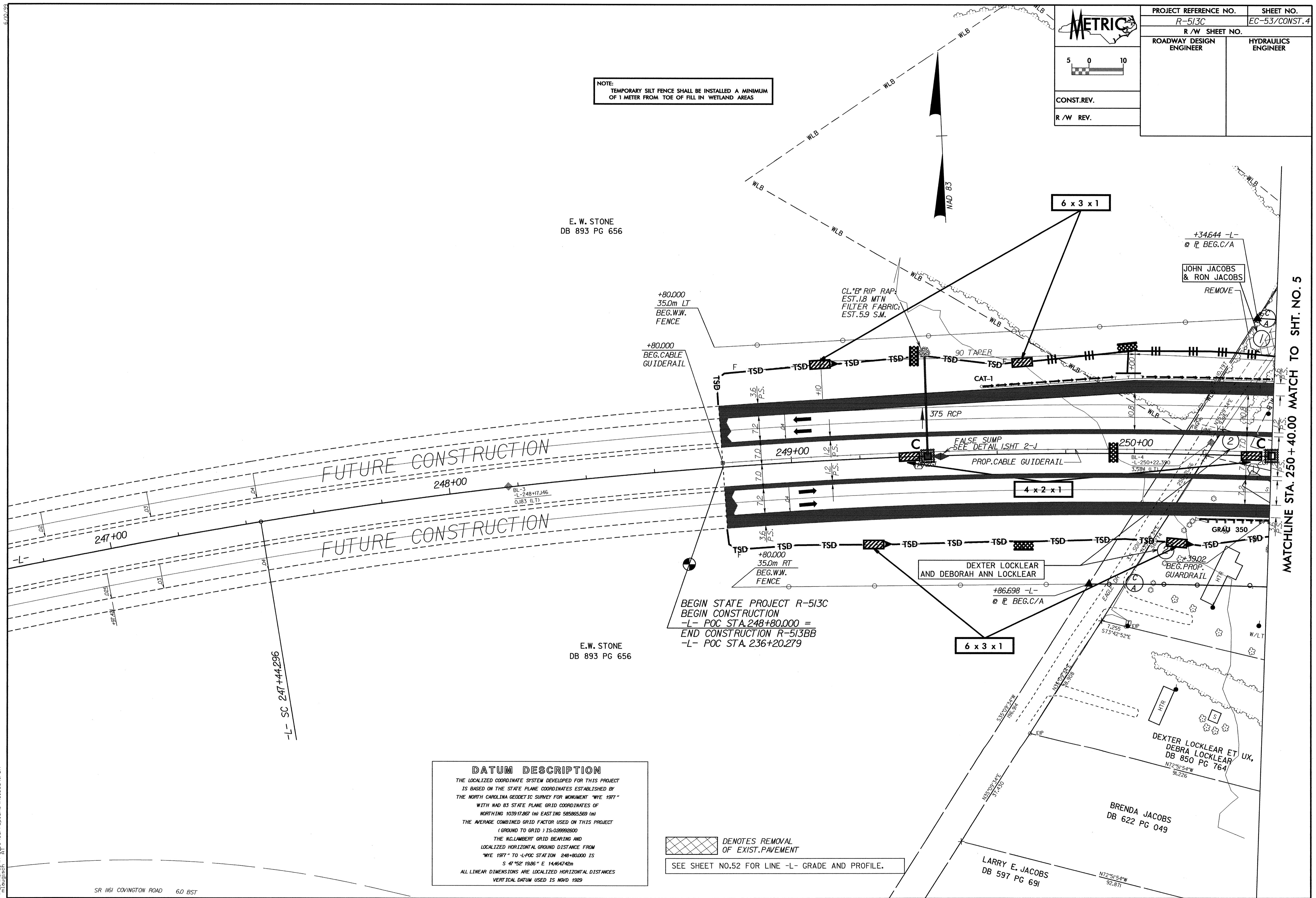
E. W. STONE
DB 893 PG 656

E. W. STONE
DB 893 PG 656

DATUM DESCRIPTION
 THE LOCALIZED COORDINATE SYSTEM DEVELOPED FOR THIS PROJECT IS BASED ON THE STATE PLANE COORDINATES ESTABLISHED BY THE NORTH CAROLINA GEODETIC SURVEY FOR MONUMENT "WYE 1977" WITH NAD 83 STATE PLANE GRID COORDINATES OF NORTHING 103917.067 (m) EASTING 585865.569 (m)
 THE AVERAGE COMBINED GRID FACTOR USED ON THIS PROJECT (GROUND TO GRID) IS: 0.99992800
 THE N. LAMBERT GRID BEARING AND LOCALIZED HORIZONTAL GROUND DISTANCE FROM "WYE 1977" TO 4+PC STATION 248+80.000 IS S 41°52' 19.86" E 14,464.742m
 ALL LINEAR DIMENSIONS ARE LOCALIZED HORIZONTAL DISTANCES
 VERTICAL DATUM USED IS MVD 1929

DENOTES REMOVAL OF EXIST. PAVEMENT
 SEE SHEET NO.52 FOR LINE -L- GRADE AND PROFILE.

MATCHLINE STA. 250 + 40.00 MATCH TO SHT. NO. 5



09-APR-2004 10:07
 d:\m\p\plans\513C04.PSH