

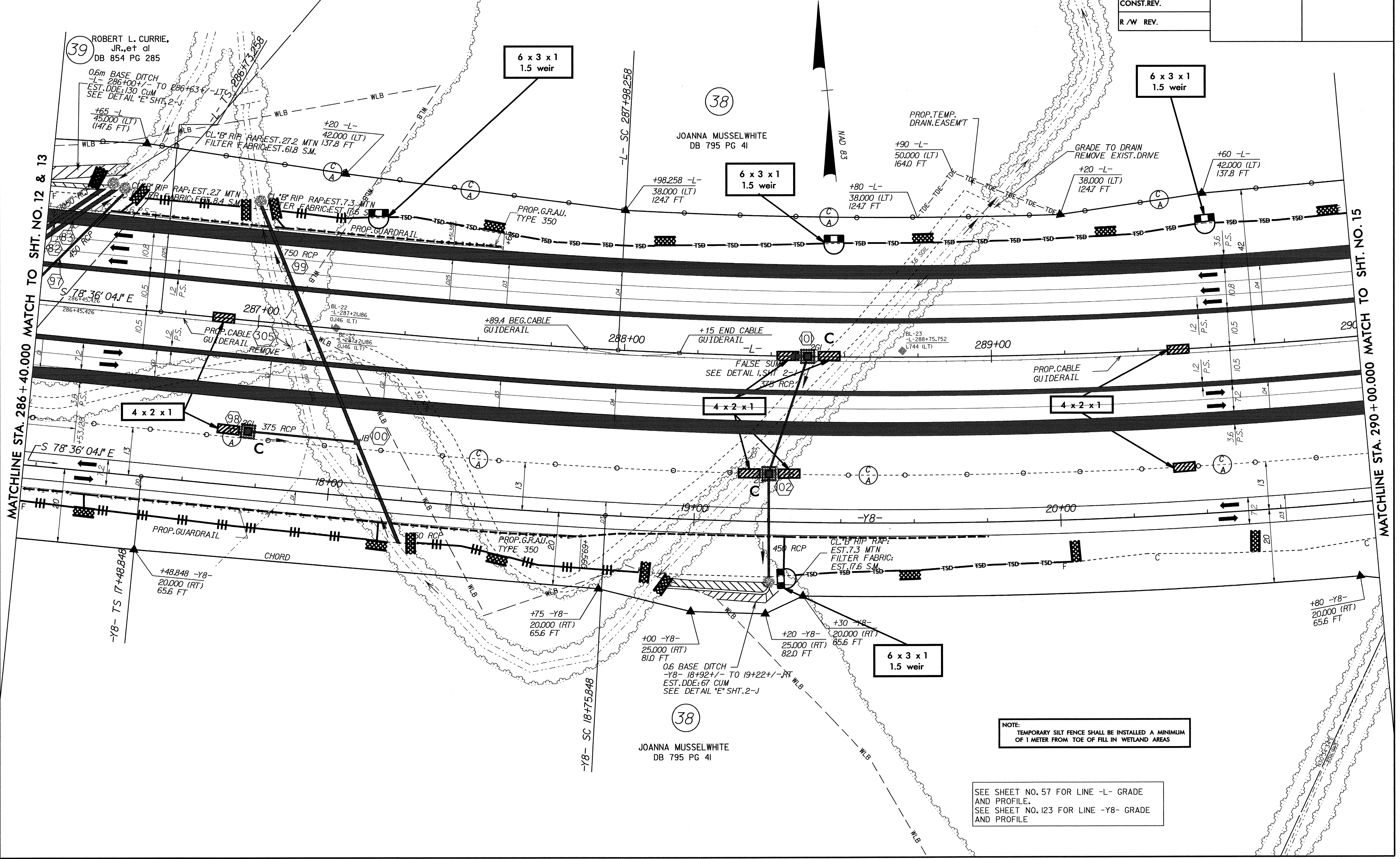
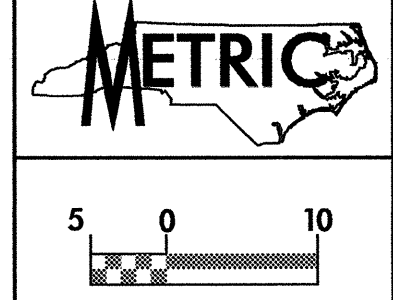
PROJECT REFERENCE NO. R-513C		SHEET NO. EC-62/CONST 14	
R/W SHEET NO.			
ROADWAY DESIGN ENGINEER		HYDRAULICS ENGINEER	
CONST. REV.			
R/W REV.			

-L-

Pls Sta 287+56.600 θs = 2° 33' 28.3" Ls = 125.000 LT = 83.342 ST = 41.675	PI Sta 290+71.002 Δ = 22° 02' 53.6" (LT) L = 538.740 T = 272.744 R = 1,400.000 SE = 4%	Pls Sta 293+78.672 θs = 2° 33' 28.3" Ls = 125.000 LT = 83.342 ST = 41.675
---	---	---

-Y8-

Pls Sta 18+33.523 θs = 2° 31' 04.2" Ls = 127.000 LT = 84.675 ST = 42.341	PI Sta 21+11.541 Δ = 18° 31' 40.1" (LT) L = 467.271 T = 235.693 R = 1,445.000 SE = 3%	Pls Sta 23+63.120 θs = 1° 11' 22.3" Ls = 60.000 LT = 40.001 ST = 20.001
--	--	---



MATCHLINE STA. 286 + 40.000 MATCH TO SHT. NO. 12 & 13

MATCHLINE STA. 290 + 00.000 MATCH TO SHT. NO. 15

NOTE:  
TEMPORARY SILT FENCE SHALL BE INSTALLED A MINIMUM OF 1 METER FROM TOE OF FILL IN WETLAND AREAS

SEE SHEET NO. 57 FOR LINE -L- GRADE AND PROFILE.  
SEE SHEET NO. 123 FOR LINE -Y8- GRADE AND PROFILE

09-APR-2004 12:03  
et:\m\curr\plans\513c14.pat