

METRIC

PROJECT REFERENCE NO. R-513C SHEET NO. EC-68/CONST.20

R/W SHEET NO.

ROADWAY DESIGN ENGINEER HYDRAULICS ENGINEER

CONST.REV.

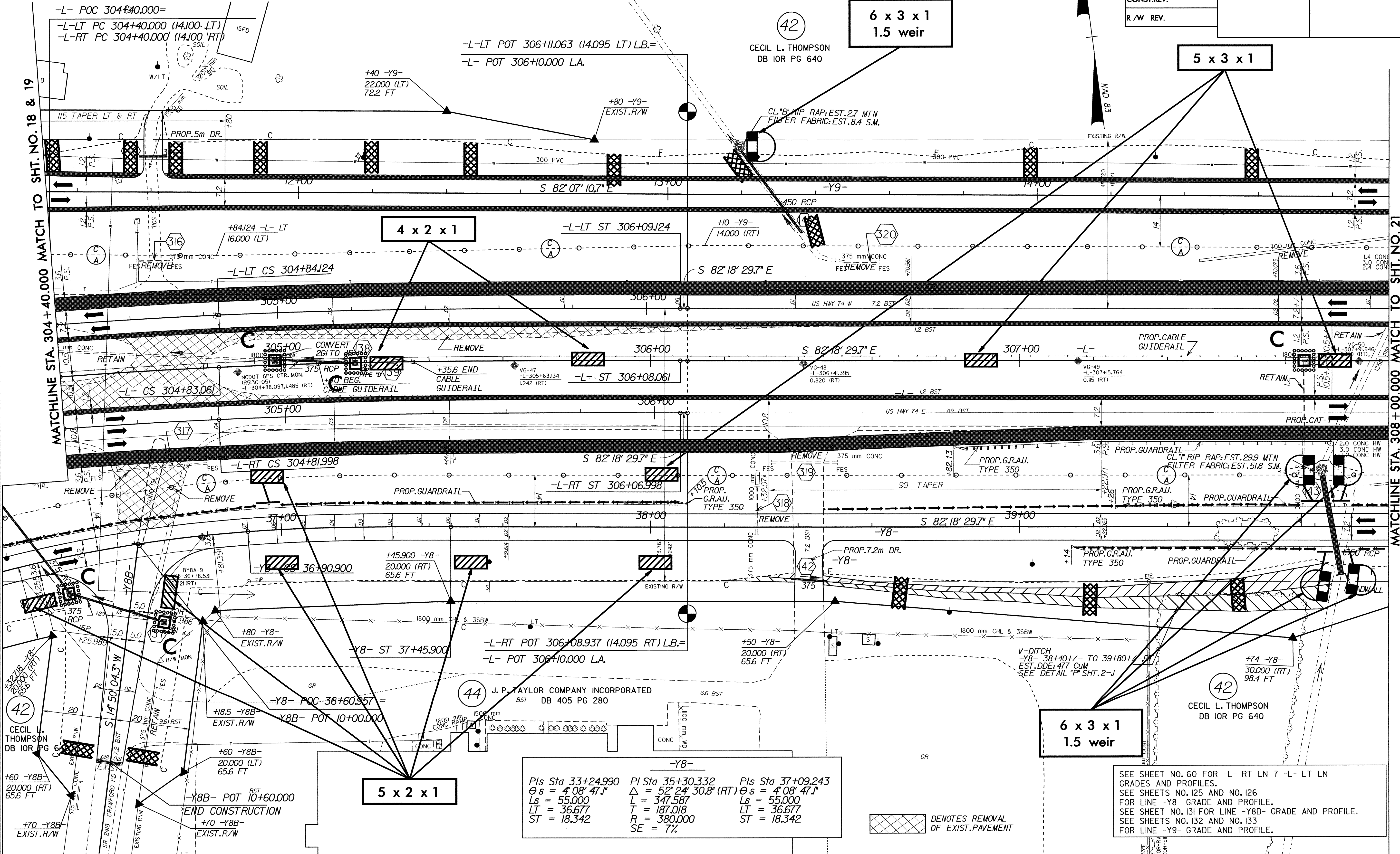
R/W REV.

5 0 10

MAD 83

-L-

Pls Sta 299+93.245 PI Sta 302+60.915 Pls Sta 305+24.736
 $\theta_s = 2^\circ 33' 28.3''$ $\Delta = 18^\circ 20' 28.0''$ (RT) $\theta_s = 2^\circ 33' 28.3''$
 $L_s = 125.000$ $L = 448.158$ $L_s = 125.000$
 $LT = 83.342$ $T = 226.012$ $LT = 83.342$
 $ST = 41.675$ $R = 1,400.000$ $ST = 41.675$
 $SE = 4\%$



MATCHLINE STA. 304 + 40.000 MATCH TO SHT. NO. 18 & 19

MATCHLINE STA. 308 + 00.000 MATCH TO SHT. NO. 21

-Y8-

Pls Sta 33+24.990 PI Sta 35+30.332 Pls Sta 37+09.243
 $\theta_s = 4^\circ 08' 47.1''$ $\Delta = 52^\circ 24' 30.8''$ (RT) $\theta_s = 4^\circ 08' 47.1''$
 $L_s = 55.000$ $L = 347.587$ $L_s = 55.000$
 $LT = 36.677$ $T = 187.018$ $LT = 36.677$
 $ST = 18.342$ $R = 380.000$ $ST = 18.342$
 $SE = 7\%$

SEE SHEET NO. 60 FOR -L- RT LN 7 -L- LT LN GRADES AND PROFILES.
 SEE SHEETS NO. 125 AND NO. 126 FOR LINE -Y8- GRADE AND PROFILE.
 SEE SHEET NO. 131 FOR LINE -Y8B- GRADE AND PROFILE.
 SEE SHEETS NO. 132 AND NO. 133 FOR LINE -Y9- GRADE AND PROFILE.

DENOTES REMOVAL OF EXIST. PAVEMENT

09-APR-2004 11:52
 d:\v\curf-plans\513C20\FSH