

PROJECT REFERENCE NO.		SHEET NO.	
		EC-69/CONST.21	
R/W SHEET NO.			
ROADWAY DESIGN ENGINEER		HYDRAULICS ENGINEER	
CONST. REV.			
R/W REV.			

-Y8-
 Pts Sta 40+86.528 PI Sta 43+311.33
 $\theta_s = 1^\circ 39' 47.7''$ $\Delta = 14' 11'' 50.8''$ (RT)
 $L_s = 98.700$ $L = 421.247$
 $LT = 65.803$ $T = 211.708$
 $ST = 32.903$ $R = 1,700.001$
 $SE = 2\%$

6 x 3 x 1
 1.5 weir

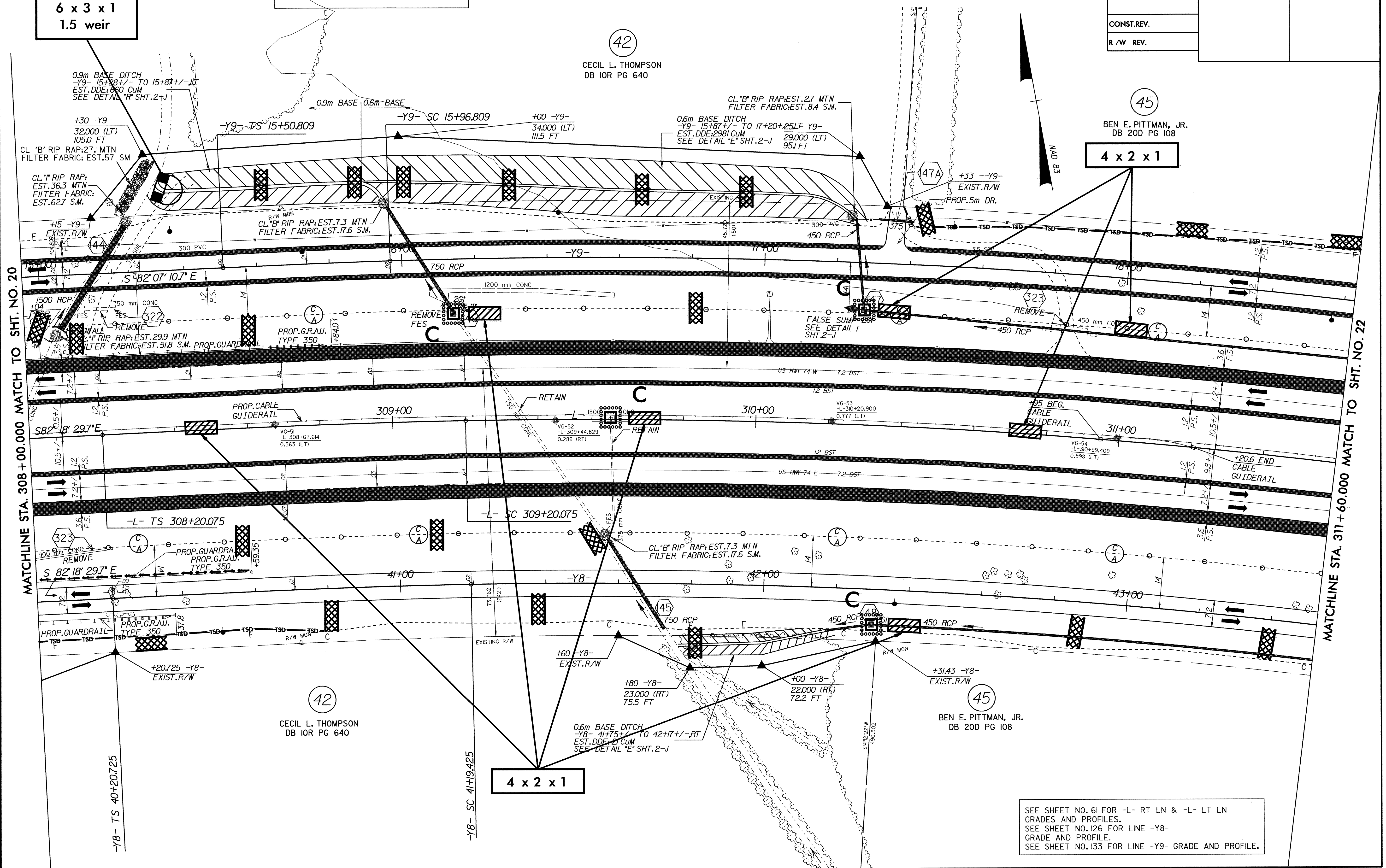
42
 CECIL L. THOMPSON
 DB IOR PG 640

45
 BEN E. PITTMAN, JR.
 DB 20D PG 108

4 x 2 x 1

MATCHLINE STA. 308 + 00.000 MATCH TO SHT. NO. 20

MATCHLINE STA. 311 + 60.000 MATCH TO SHT. NO. 22



42
 CECIL L. THOMPSON
 DB IOR PG 640

45
 BEN E. PITTMAN, JR.
 DB 20D PG 108

4 x 2 x 1

SEE SHEET NO. 61 FOR -L- RT LN & -L- LT LN GRADES AND PROFILES.
 SEE SHEET NO. 126 FOR LINE -Y8- GRADE AND PROFILE.
 SEE SHEET NO. 133 FOR LINE -Y9- GRADE AND PROFILE.

09-APR-2004 14:16
 d:\vnu\p\ur\21-RR-136\curr-e\plans\RB13C21.PSH
 13/03/2004 11:11