

**METRIC**

5 0 10

CONST.REV.  
R/W REV.

PROJECT REFERENCE NO. R-513C	SHEET NO. EC-72/CONST.24
R/W SHEET NO.	
ROADWAY DESIGN ENGINEER	HYDRAULICS ENGINEER

**-L-**

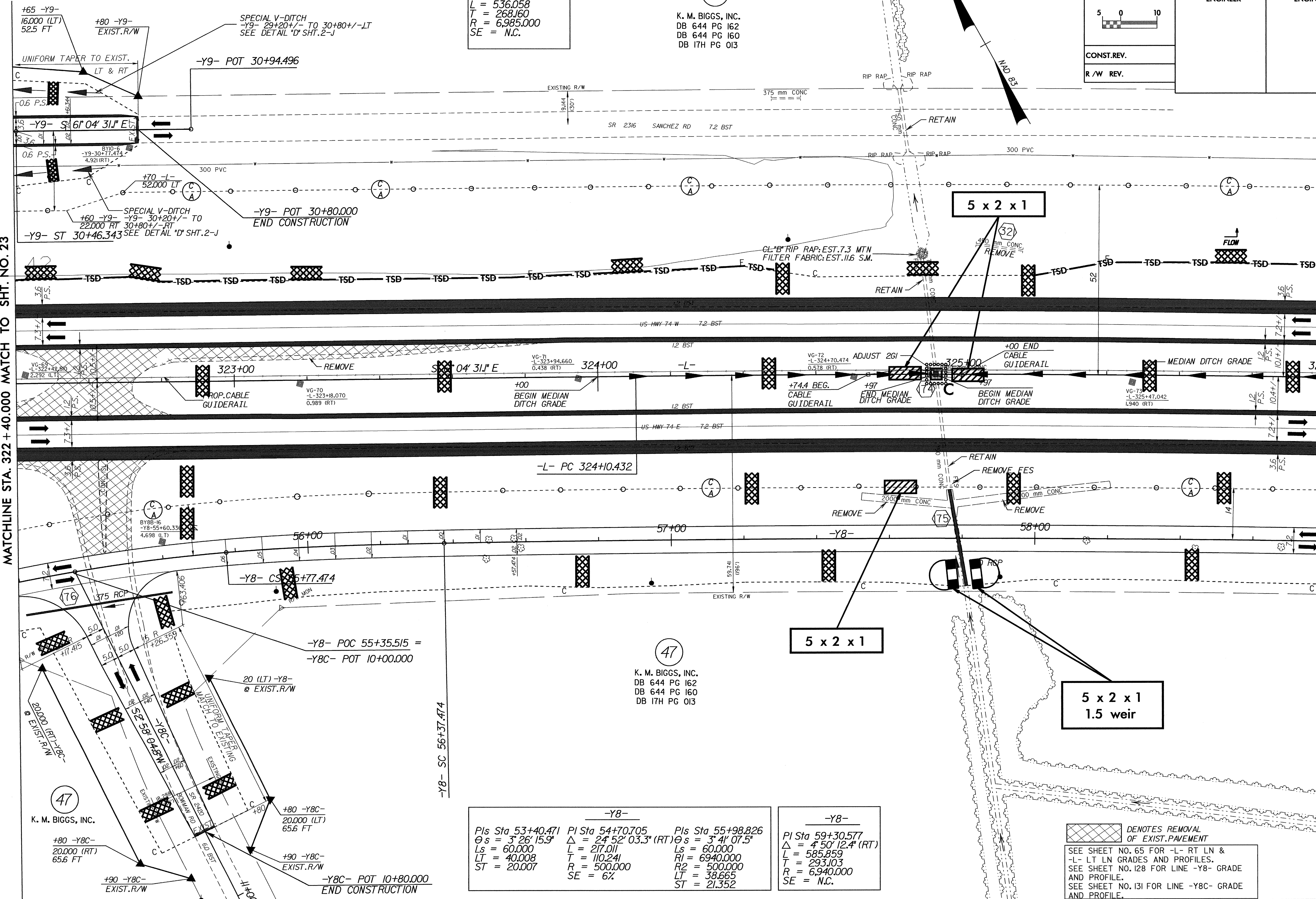
PI Sta 326+78.592  
 $\Delta = 4^\circ 23' 49.6" (RT)$   
 $L = 536.058$   
 $T = 268.160$   
 $R = 6,985.000$   
 $SE = N.C.$

**47**

K. M. BIGGS, INC.  
 DB 644 PG 162  
 DB 644 PG 160  
 DB 17H PG 013

MATCHLINE STA. 322 + 40.000 MATCH TO SHT. NO. 23

MATCHLINE STA. 326 + 00.000 MATCH TO SHT. NO. 25



**-Y8-**

PIs Sta 53+40.471 $\theta s = 3^\circ 26' 15.9"$ $Ls = 60.000$ $LT = 40.008$ $ST = 20.007$	PI Sta 54+70.705 $\Delta = 2^\circ 52' 03.3" (RT)$ $Ls = 217.011$ $T = 110.241$ $R2 = 500.000$ $SE = 6\%$	PIs Sta 55+98.826 $\theta s = 3^\circ 41' 07.5"$ $Ls = 60.000$ $R1 = 6940.000$ $R2 = 500.000$ $LT = 38.665$ $ST = 21.352$
--	--	---

**-Y8-**

PI Sta 59+30.577  
 $\Delta = 4^\circ 50' 12.4" (RT)$   
 $L = 585.859$   
 $T = 293.103$   
 $R = 6,940.000$   
 $SE = N.C.$

DENOTES REMOVAL OF EXIST. PAVEMENT

SEE SHEET NO. 65 FOR -L- RT LN & -L- LT LN GRADES AND PROFILES.  
 SEE SHEET NO. 128 FOR LINE -Y8- GRADE AND PROFILE.  
 SEE SHEET NO. 131 FOR LINE -Y8C- GRADE AND PROFILE.

09-APR-2004 JFB58  
 d:\projects\2004\11513C\cur-f-plans\B31324.P54