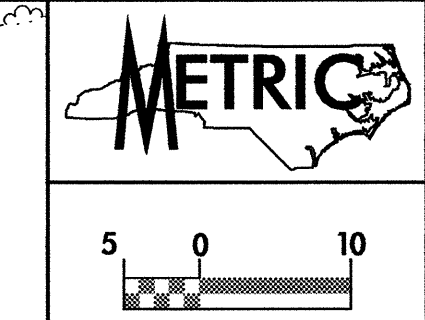
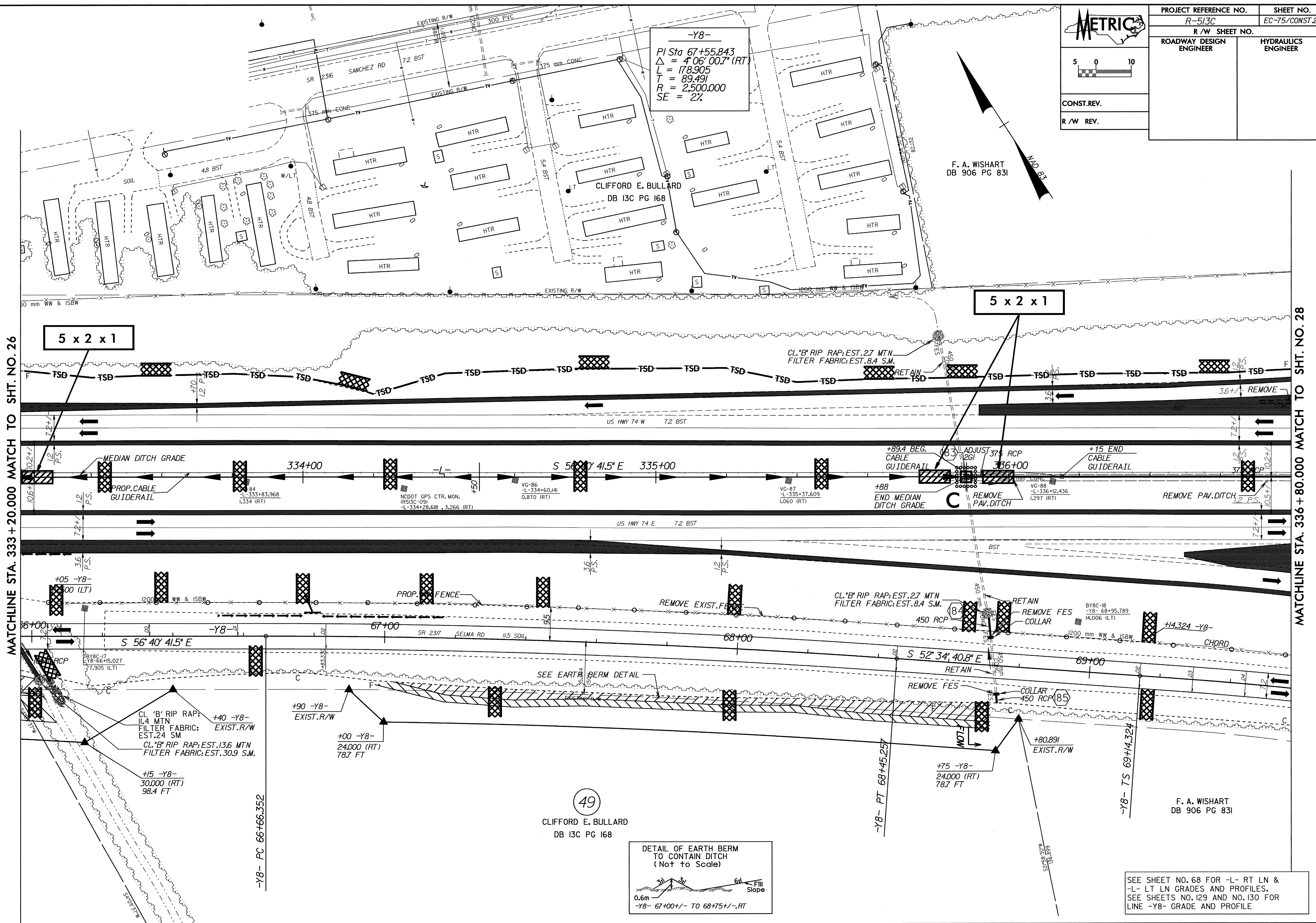


PROJECT REFERENCE NO. R-513C		SHEET NO. EC-75/CONST.27	
R/W SHEET NO.			
ROADWAY DESIGN ENGINEER		HYDRAULICS ENGINEER	
CONST.REV.			
R/W REV.			



F. A. WISHART
DB 906 PG 831

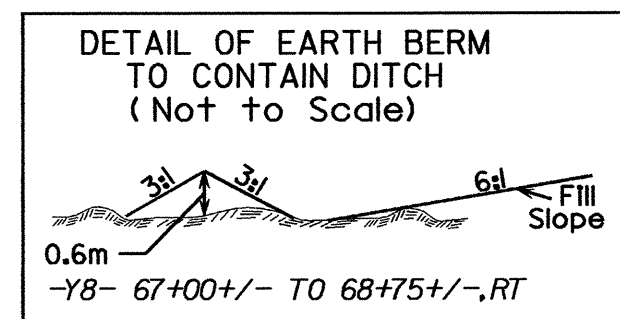
-Y8-
PI Sta 67+55.843
 $\Delta = 4' 06'' 00.7'' (RT)$
L = 178.905
T = 89.491
R = 2,500.000
SE = 2%



MATCHLINE STA. 333+20.000 MATCH TO SHT. NO. 26

MATCHLINE STA. 336+80.000 MATCH TO SHT. NO. 28

49
CLIFFORD E. BULLARD
DB 13C PG 168



SEE SHEET NO. 68 FOR -L- RT LN & -L- LT LN GRADES AND PROFILES.
SEE SHEETS NO. 129 AND NO. 130 FOR LINE -Y8- GRADE AND PROFILE

09-APR-2004 15:18
d:\a\p\2004\1518\13c\curr-pl\ena\F813C27.PSH