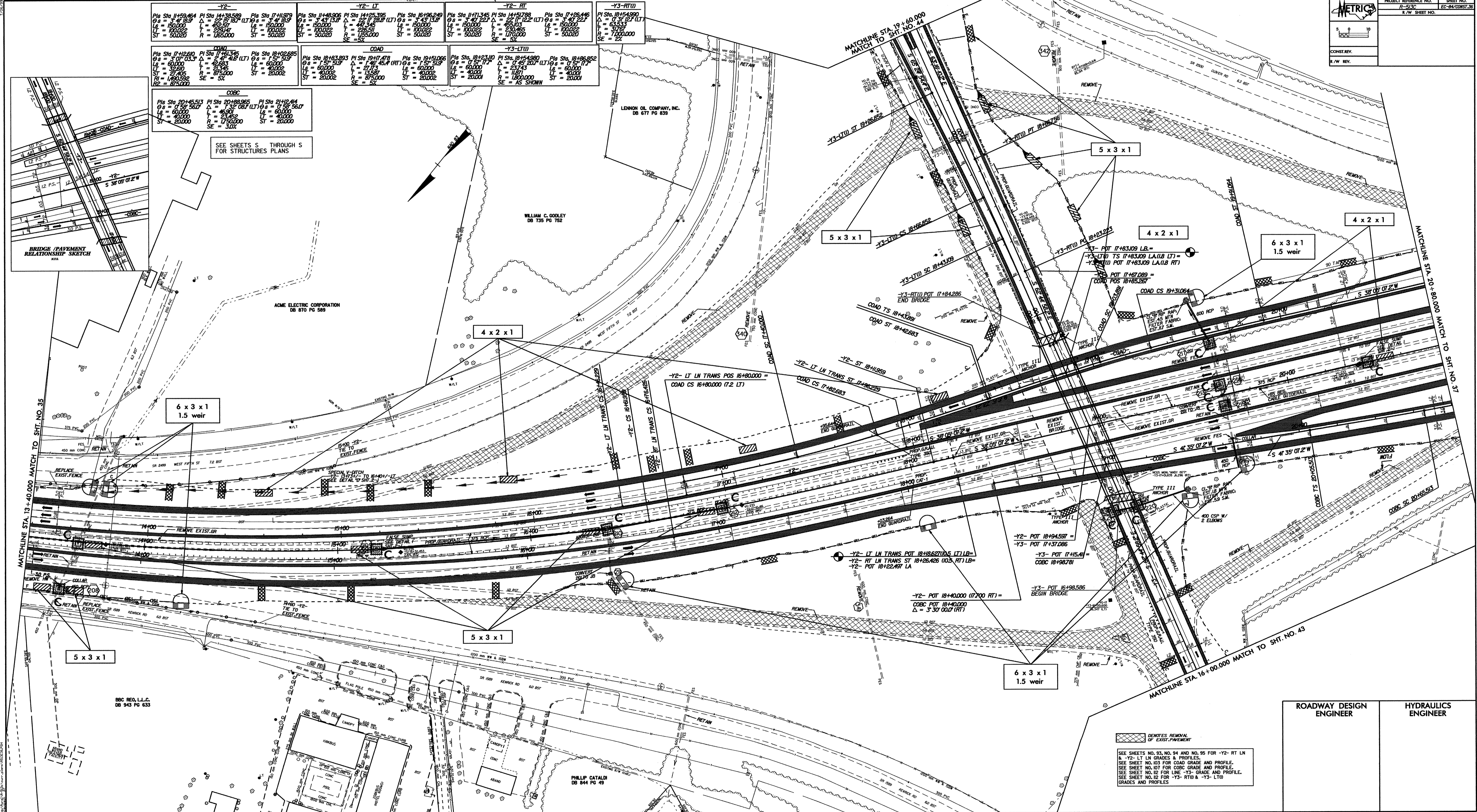


-Y2-		-Y2- LT		-Y2- RT		-Y3- RTD	
Pic Sta 17+153.464 G = 3.47 18.5 L = 150.000 ST = 50.020	Pic Sta 17+117.979 G = 3.47 18.5 L = 150.000 ST = 50.020	Pic Sta 17+48.906 G = 3.47 13.9 L = 150.000 ST = 50.020	Pic Sta 17+405.355 G = 3.47 13.9 L = 150.000 ST = 50.020	Pic Sta 17+496.249 G = 3.47 13.9 L = 150.000 ST = 50.020	Pic Sta 17+113.245 G = 3.47 22.1 L = 150.000 ST = 50.020	Pic Sta 17+451.709 G = 3.47 12.2 (LT) L = 150.000 ST = 50.020	Pic Sta 17+406.446 G = 3.47 22.1 L = 150.000 ST = 50.020

COAD		-Y3- LTD	
Pic Sta 17+126.000 G = 3.47 33.3 L = 60.000 ST = 20.000	Pic Sta 17+161.316 G = 3.47 41.8 (LT) L = 60.000 ST = 20.000	Pic Sta 18+102.695 G = 1.57 51.9 L = 60.000 ST = 20.002	Pic Sta 18+143.693 G = 1.57 51.9 L = 60.000 ST = 20.002

COBC	
Pic Sta 20+456.513 G = 1.57 56.0 L = 60.000 ST = 20.000	Pic Sta 20+498.955 G = 1.57 56.0 L = 60.000 ST = 20.000

SEE SHEETS S THROUGH S FOR STRUCTURES PLANS



ROADWAY DESIGN ENGINEER

HYDRAULICS ENGINEER

DEMOTES REMOVAL OF EXIST. PAVEMENT

SEE SHEETS NO. 83, NO. 84 AND NO. 85 FOR -Y2- RT LN & -Y2- LT LN GRADES & PROFILES.
 SEE SHEET NO. 103 FOR COAD GRADE AND PROFILE.
 SEE SHEET NO. 101 FOR COBC GRADE AND PROFILE.
 SEE SHEET NO. 102 FOR LINE -Y3- GRADE AND PROFILE.
 SEE SHEET NO. 102 FOR -Y3- RTD & -Y3- LTD GRADES AND PROFILES.