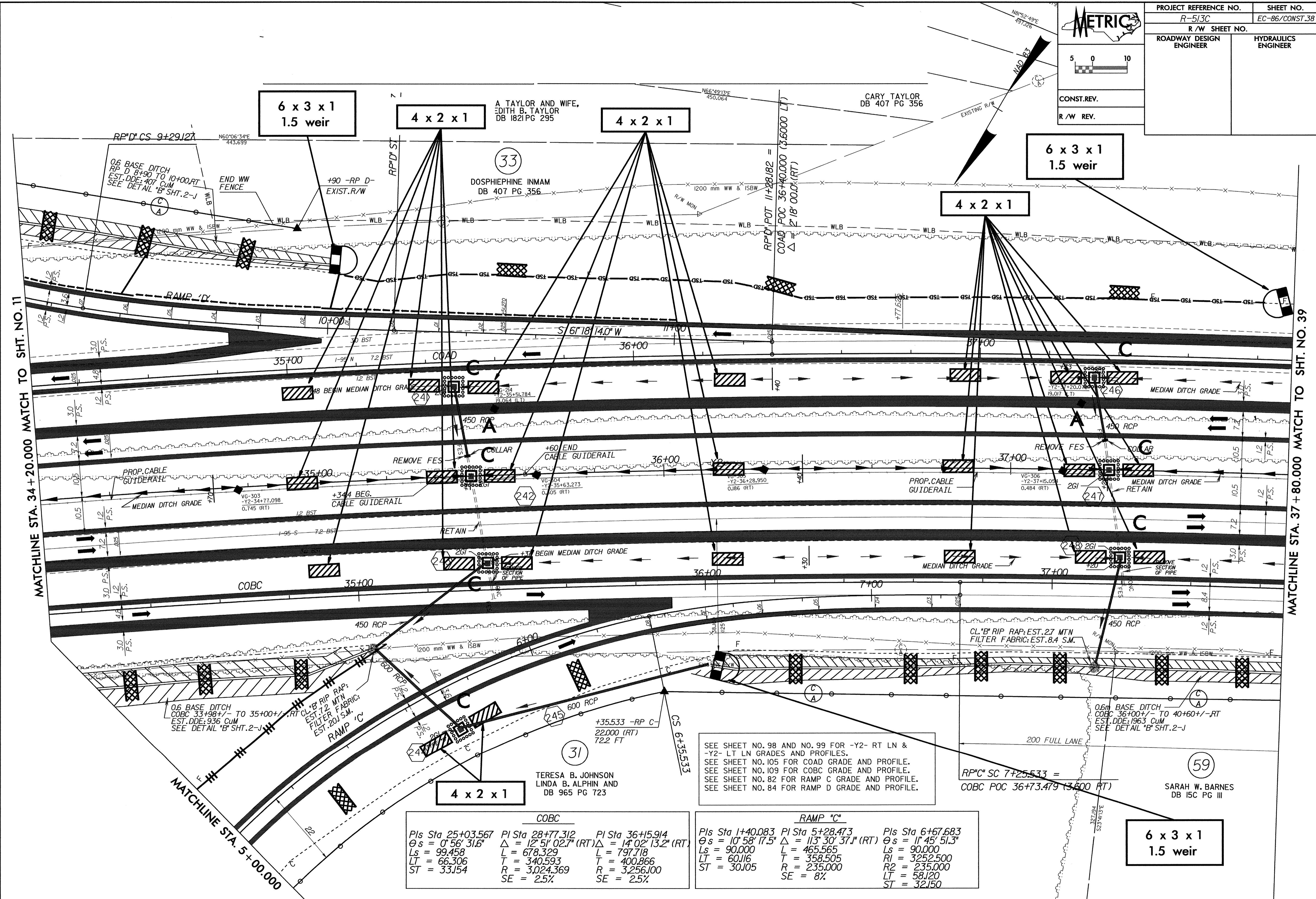


PROJECT REFERENCE NO. R-513C		SHEET NO. EC-86/CONST.38	
R/W SHEET NO.			
ROADWAY DESIGN ENGINEER		HYDRAULICS ENGINEER	
CONST. REV.		R/W REV.	



MATCHLINE STA. 34 + 20.000 MATCH TO SHT. NO. 11

MATCHLINE STA. 37 + 80.000 MATCH TO SHT. NO. 39

COBC

Pls Sta 25+03.567	PI Sta 28+77.312	PI Sta 36+15.914
$\theta_s = 0^\circ 56' 31.6''$	$\Delta = 12^\circ 51' 02.7''$ (RT)	$\Delta = 14^\circ 02' 13.2''$ (RT)
Ls = 99.458	L = 678.329	L = 797.718
LT = 66.306	T = 340.593	T = 400.866
ST = 33.154	R = 3,024.369	R = 3,256.100
	SE = 2.5%	SE = 2.5%

RAMP 'C'

Pls Sta 1+40.083	PI Sta 5+28.473	Pls Sta 6+67.683
$\theta_s = 10^\circ 58' 17.5''$	$\Delta = 113^\circ 30' 37.1''$ (RT)	$\theta_s = 11^\circ 45' 51.3''$
Ls = 90.000	L = 465.565	Ls = 90.000
LT = 60.116	T = 358.505	RI = 3252.500
ST = 30.105	R = 235.000	R2 = 235.000
	SE = 8%	LT = 58.120
		ST = 32.150

SEE SHEET NO. 98 AND NO. 99 FOR -Y2- RT LN & -Y2- LT LN GRADES AND PROFILES.
SEE SHEET NO. 105 FOR COAD GRADE AND PROFILE.
SEE SHEET NO. 109 FOR COBC GRADE AND PROFILE.
SEE SHEET NO. 82 FOR RAMP C GRADE AND PROFILE.
SEE SHEET NO. 84 FOR RAMP D GRADE AND PROFILE.

**6 x 3 x 1
1.5 weir**

12-APR-2004 07:35
d:\a\p\p\ec-86\const\ec-86\const.plt