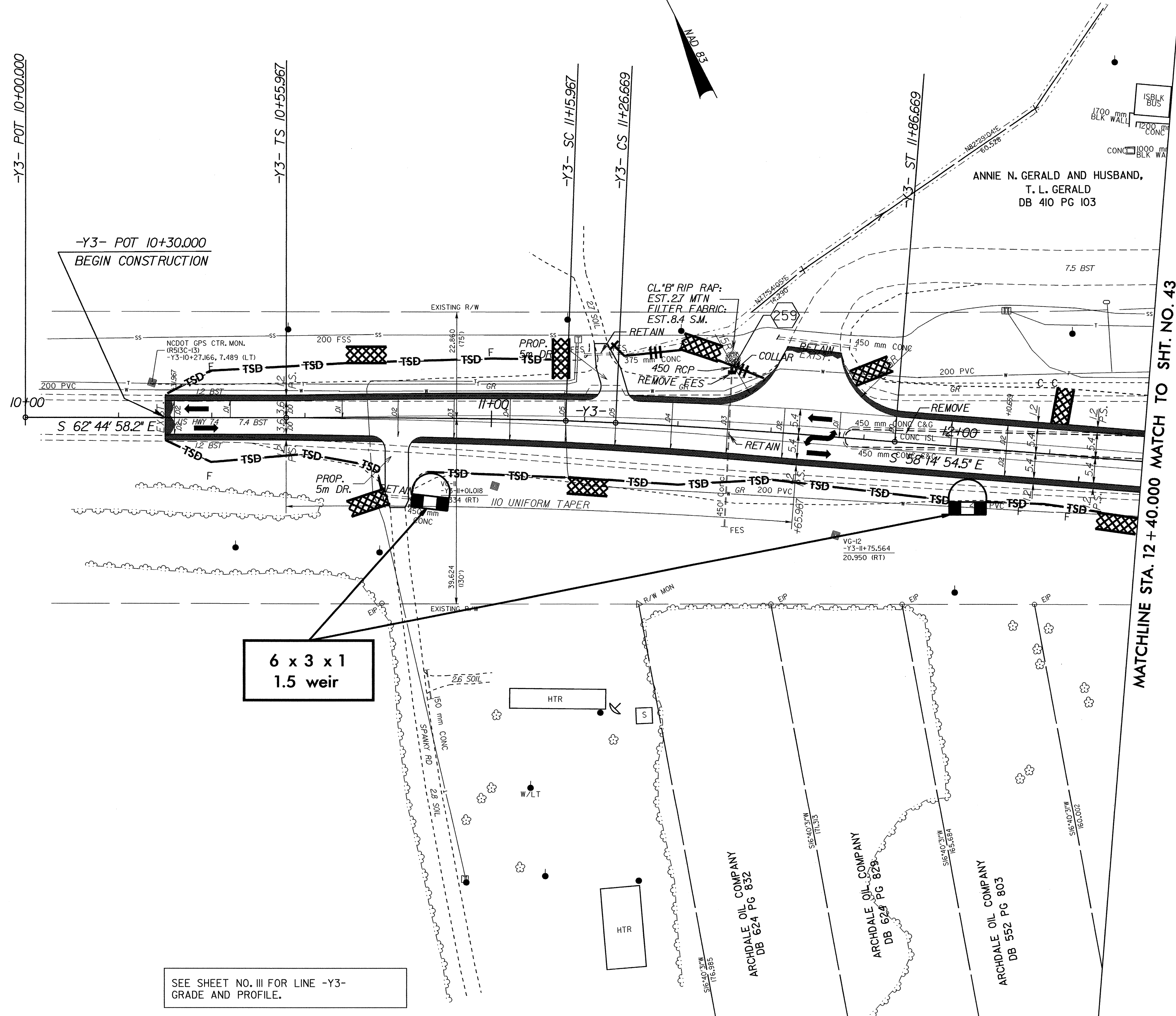
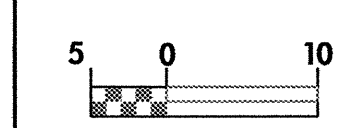


	PROJECT REFERENCE NO.	SHEET NO.
	R-513C	EC-90/CONST.42
ROADWAY DESIGN ENGINEER		HYDRAULICS ENGINEER
CONST. REV.		
R/W REV.		

-Y3-

Pls Sta. 10+95.970	PI Sta. 11+21.318	Pls Sta. 11+46.671
$\theta_s = 1^\circ 54' 35.5"$	$\Delta = 0^\circ 40' 52.7" (RT)$	$\theta_s = 1^\circ 54' 35.5"$
$L_s = 60.000$	$L = 10.702$	$L_s = 60.000$
$LT = 40.002$	$T = 5.351$	$LT = 40.002$
$ST = 20.002$	$R = 900.000$	$ST = 20.002$
	$SE = .05$	



SEE SHEET NO. III FOR LINE -Y3- GRADE AND PROFILE.

MATCHLINE STA. 12 + 40.000 MATCH TO SHT. NO. 43

6/10/09
12-APP-2004 0826
d:\planning\12-APP-2004 0826\12-APP-2004 0826\12-APP-2004 0826.dwg