

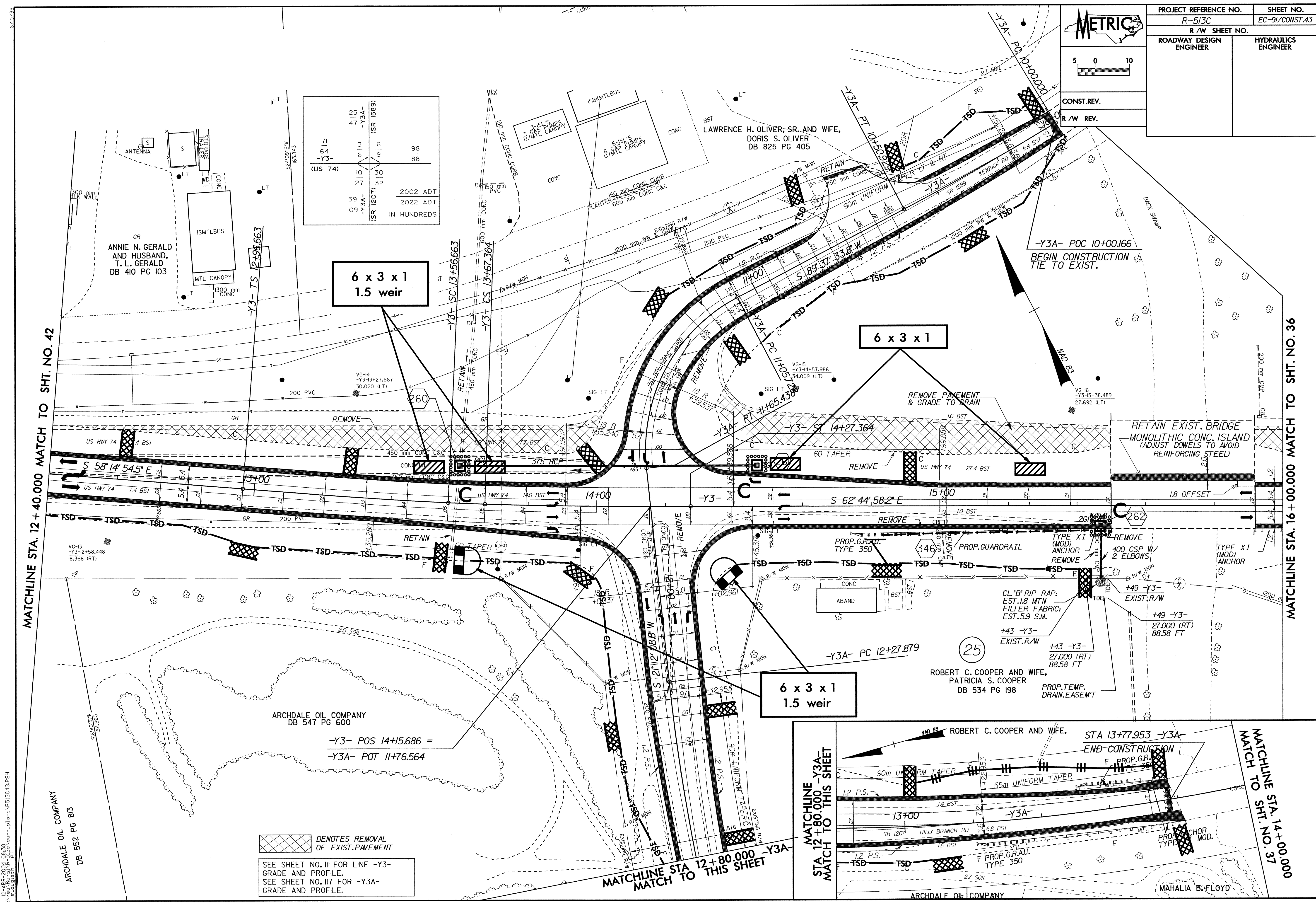
**METRIC**

PROJECT REFERENCE NO. R-513C SHEET NO. EC-91/CONST.43

R/W SHEET NO. ROADWAY DESIGN ENGINEER HYDRAULICS ENGINEER

CONST. REV. R/W REV.

5 0 10



MATCHLINE STA. 12 + 40.000 MATCH TO SHT. NO. 42

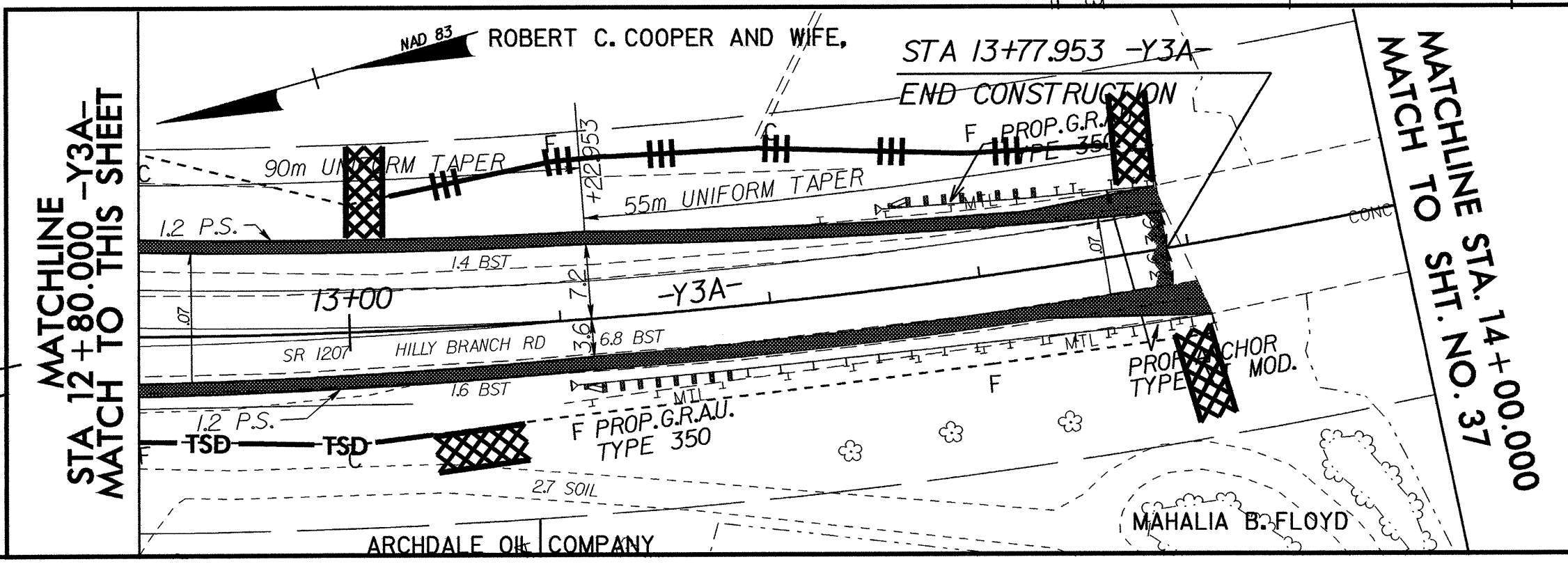
MATCHLINE STA. 16 + 00.000 MATCH TO SHT. NO. 36

**6 x 3 x 1  
1.5 weir**

**6 x 3 x 1**

**6 x 3 x 1  
1.5 weir**

DENOTES REMOVAL OF EXIST. PAVEMENT  
 SEE SHEET NO. III FOR LINE -Y3- GRADE AND PROFILE.  
 SEE SHEET NO. II7 FOR -Y3A- GRADE AND PROFILE.



12-APR-2004 08:38  
dr:\nu\m\ref\p\303\cur-plans\HBI3C43.PSH

ARCHDALE OIL COMPANY  
DB 552 PG 813

ARCHDALE OIL COMPANY  
DB 547 PG 600

ROBERT C. COOPER AND WIFE,  
PATRICIA S. COOPER  
DB 534 PG 198

MATCHLINE STA 12 + 80.000 -Y3A-  
MATCH TO THIS SHEET

MATCHLINE STA. 14 + 00.000  
MATCH TO SHT. NO. 37