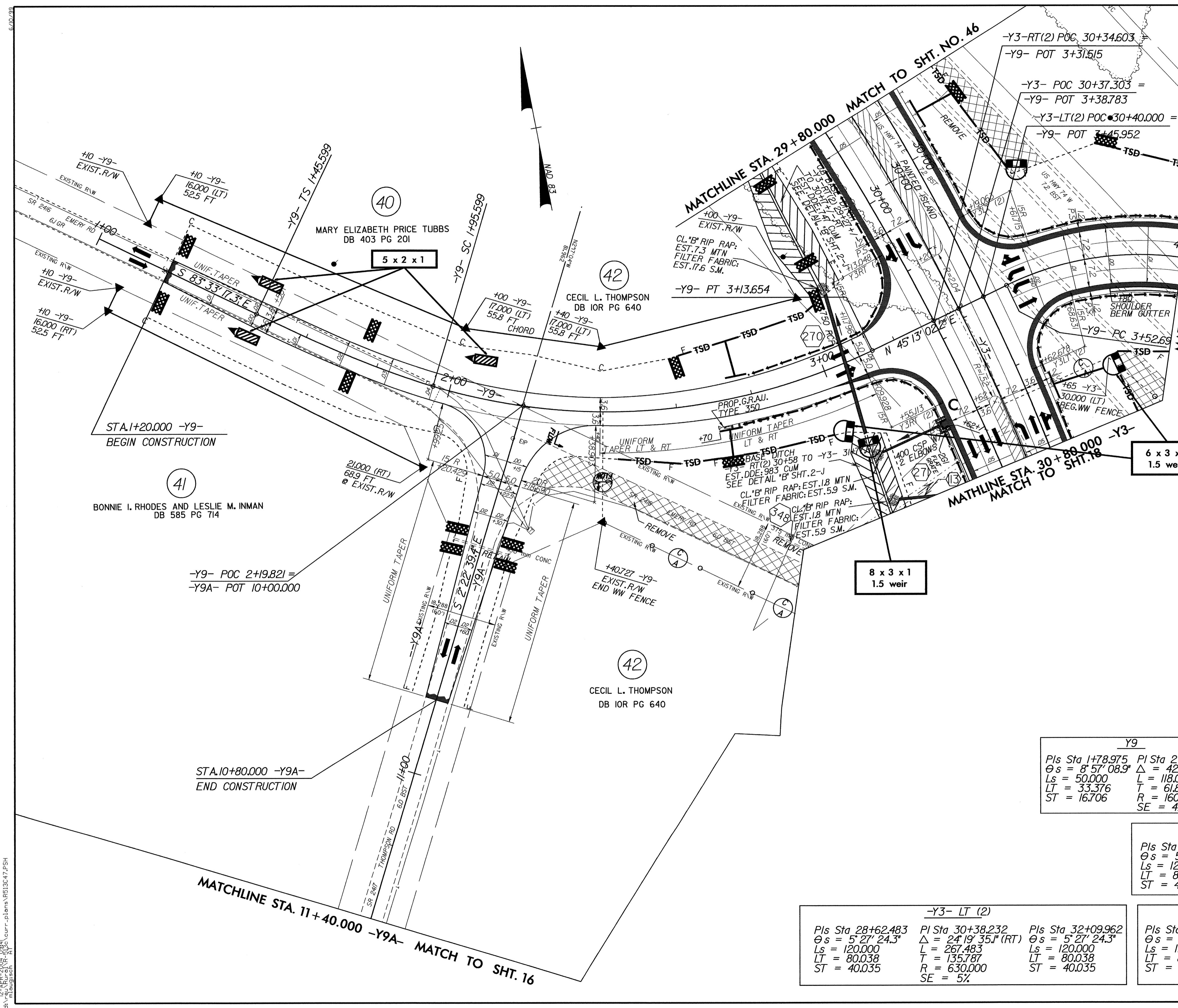


PROJECT REFERENCE NO. R-513C	SHEET NO. EC-95/CONST.47
R/W SHEET NO.	
ROADWAY DESIGN ENGINEER	HYDRAULICS ENGINEER
CONST. REV.	
R/W REV.	



SEE SHEET NO. 131 FOR LINE -Y9- GRADE AND PROFILE.
 SEE SHEET NO. 135 FOR LINE -Y9A- GRADE AND PROFILE.
 SEE SHEET NO. 115 FOR LINE -Y3-RT(2) GRADE AND PROFILE.
 SEE SHEET NO. 115 FOR LINE -Y3-LT(2) GRADE AND PROFILE.

-Y9-	23	37
-Y3-	40	55
(US 74)	1	2
	2	5
		2002 ADT
		2022 ADT
		IN HUNDREDS

-Y9-	
Pls Sta 1+78.975	Pls Sta 2+57.459
$\theta s = 8' 57' 08.9''$	$\Delta = 42' 16' 31.6''$ (LT)
Ls = 50.000	L = 118.055
LT = 33.376	T = 61.860
ST = 16.706	R = 160.000
	SE = 4%

-Y9-	
Pls Sta 3+86.475	Pls Sta 4+38.469
$\Delta = 49' 23' 03.0''$ (RT)	$\theta s = 17' 54' 17.8''$
L = 68.953	Ls = 50.000
T = 36.783	LT = 33.505
R = 80.000	ST = 16.823
SE = AS SHOWN	

-Y3-		
Pls Sta 28+76.307	Pls Sta 30+42.599	Pls Sta 32+05.334
$\theta s = 5' 43' 46.5''$	$\Delta = 23' 46' 50.6''$ (RT)	$\theta s = 5' 43' 46.5''$
Ls = 120.000	L = 249.031	Ls = 120.000
LT = 80.042	T = 126.334	LT = 80.042
ST = 40.038	R = 600.000	ST = 40.038

-Y3- LT (2)		
Pls Sta 28+62.483	Pls Sta 30+38.232	Pls Sta 32+09.962
$\theta s = 5' 27' 24.3''$	$\Delta = 24' 19' 35.1''$ (RT)	$\theta s = 5' 27' 24.3''$
Ls = 120.000	L = 267.483	Ls = 120.000
LT = 80.038	T = 135.787	LT = 80.038
ST = 40.035	R = 630.000	ST = 40.035
	SE = 5%	

-Y3- RT (2)		
Pls Sta 28+90.133	Pls Sta 30+46.975	Pls Sta 32+00.708
$\theta s = 6' 01' 52.1''$	$\Delta = 23' 10' 39.4''$ (RT)	$\theta s = 6' 01' 52.1''$
Ls = 120.000	L = 230.580	Ls = 120.000
LT = 80.046	T = 116.888	LT = 80.046
ST = 40.042	R = 570.000	ST = 40.042
	SE = 5%	

12: APR-2006 08:41 C:\curr-plans\05130617.P51
 m:\05130617