

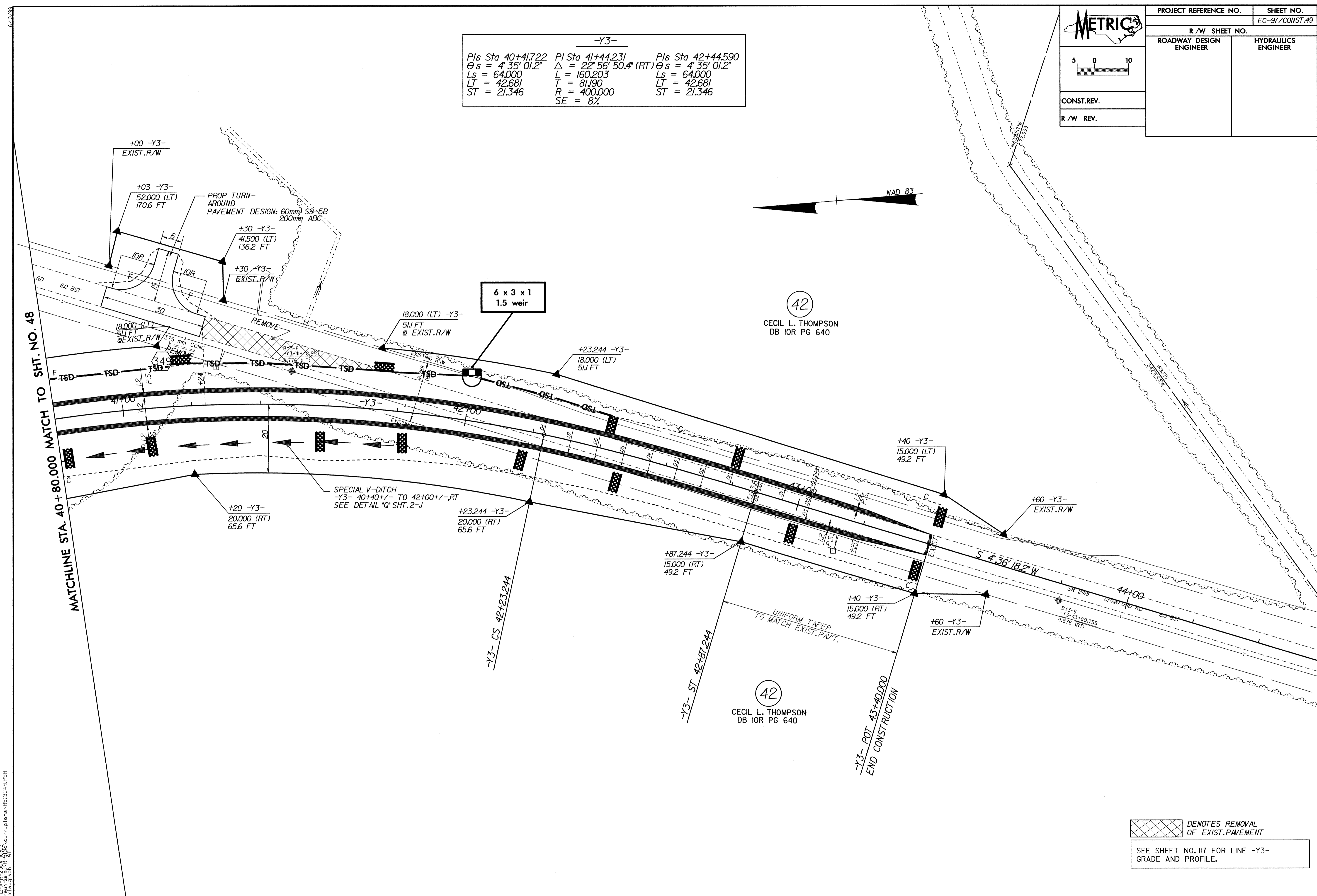
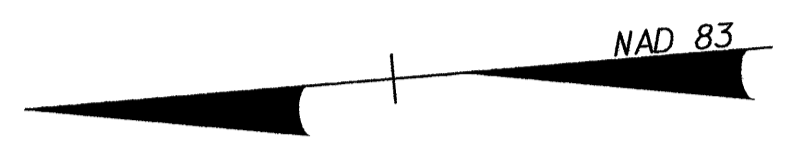
METRIC

CONST. REV.
R/W REV.

PROJECT REFERENCE NO.	SHEET NO.
	EC-97/CONST.49
R/W SHEET NO.	
ROADWAY DESIGN ENGINEER	HYDRAULICS ENGINEER

-Y3-

Pls Sta 40+41.722	Pls Sta 41+44.231	Pls Sta 42+44.590
$\theta s = 4' 35' 01.2''$	$\Delta = 22' 56' 50.4''$ (RT)	$\theta s = 4' 35' 01.2''$
$Ls = 64.000$	$L = 160.203$	$Ls = 64.000$
$LT = 42.681$	$T = 81.190$	$LT = 42.681$
$ST = 21.346$	$R = 400.000$	$ST = 21.346$
	$SE = 8\%$	



MATCHLINE STA. 40 + 80,000 MATCH TO SHT. NO. 48

d:\2-NR-2006\1003\curr-clens\RE13049.PSH

DENOTES REMOVAL OF EXIST. PAVEMENT

SEE SHEET NO. 117 FOR LINE -Y3- GRADE AND PROFILE.