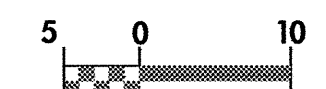


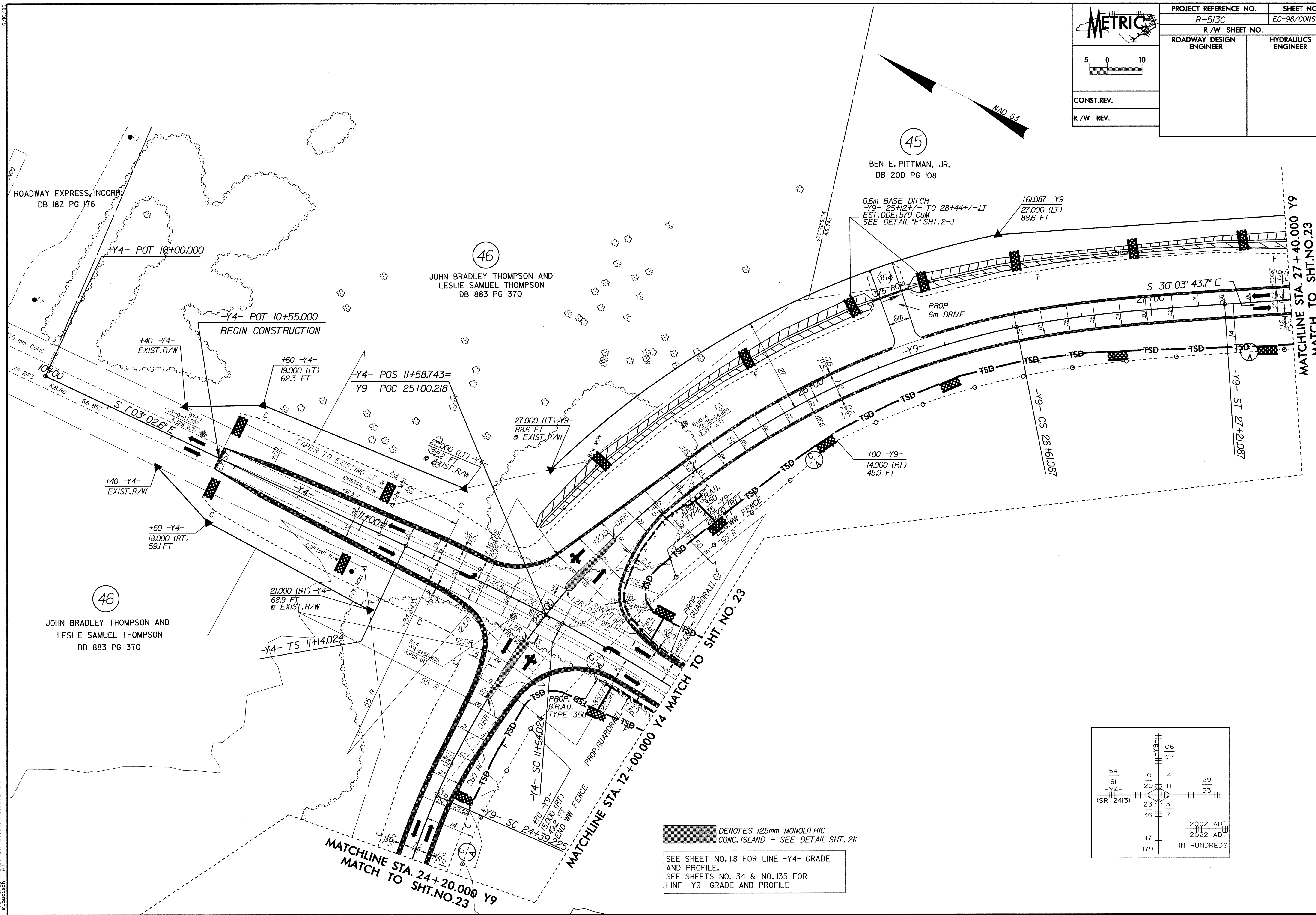
METRIC

PROJECT REFERENCE NO. R-513C	SHEET NO. EC-98/CONST.50
R/W SHEET NO.	
ROADWAY DESIGN ENGINEER	HYDRAULICS ENGINEER

CONST.REV.
R/W REV.



CONST.REV.
R/W REV.



ROADWAY EXPRESS, INCORP
DB 18Z PG J76

(46)
JOHN BRADLEY THOMPSON AND
LESLIE SAMUEL THOMPSON
DB 883 PG 370

(45)
BEN E. PITTMAN, JR.
DB 20D PG 108

(46)
JOHN BRADLEY THOMPSON AND
LESLIE SAMUEL THOMPSON
DB 883 PG 370

DENOTES 125mm MONOLITHIC CONC. ISLAND - SEE DETAIL SHT. 2K

SEE SHEET NO. 118 FOR LINE -Y4- GRADE AND PROFILE.
SEE SHEETS NO. 134 & NO. 135 FOR LINE -Y9- GRADE AND PROFILE.

		106	
		167	
54	10	4	29
91	20	11	53
(SR 2413)	23	3	
	36	7	
	117		
	179		

2002 ADT
2022 ADT
IN HUNDREDS

41
d:\a\p\2004\014\curr-plan\REVISION.PSH
6/10/23

10

10

6/10/23

6/10/23