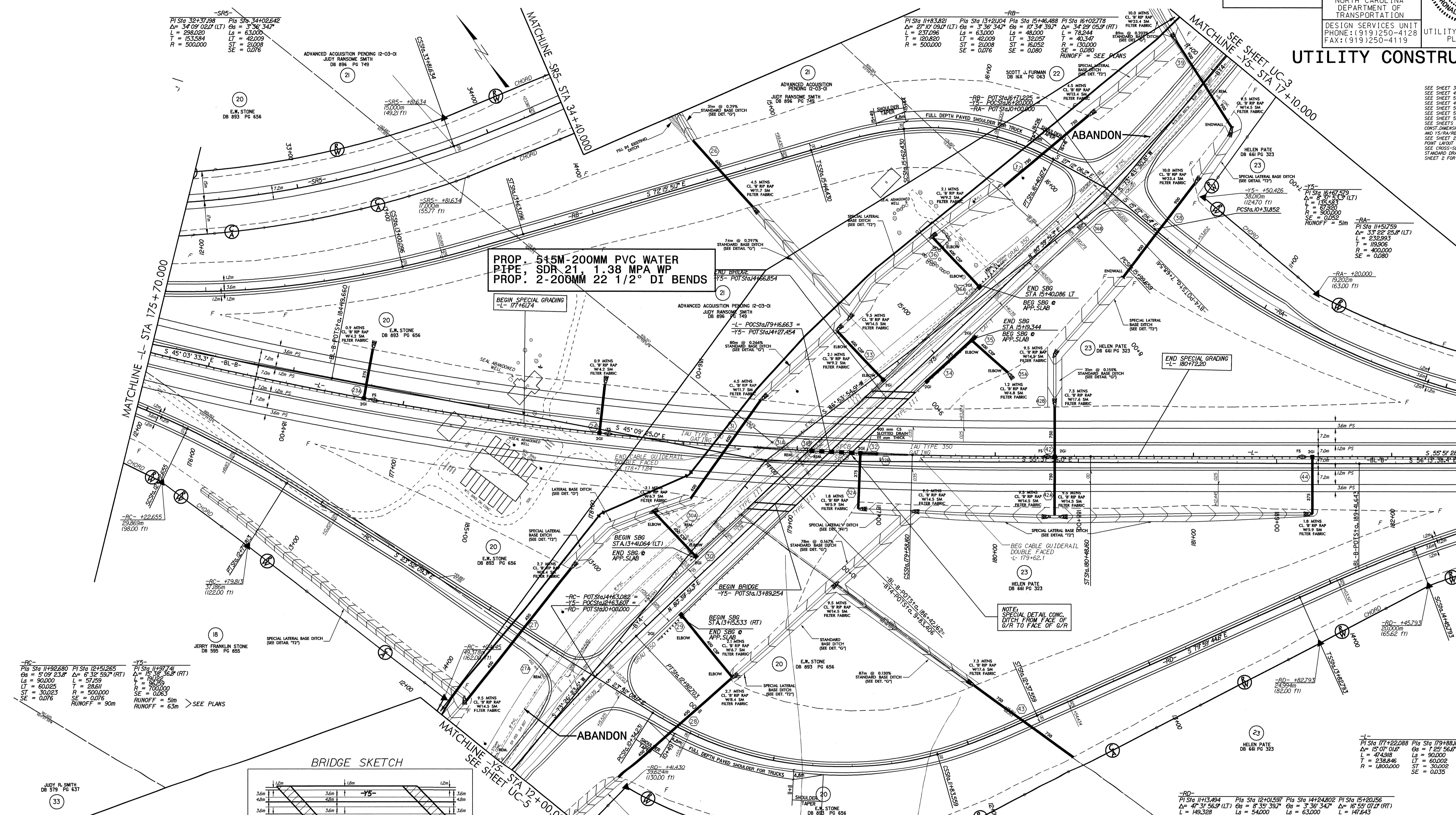


PROJECT REFERENCE NO.	R-513BB	SHEET NO.	UC-4
DESIGNED BY:	CSG		
DRAWN BY:	CSG		
CHECKED BY:	MRB		
APPROVED BY:	RBW		
REVISED:			
NORTH CAROLINA DEPARTMENT OF TRANSPORTATION		UTILITY CONSTRUCTION PLANS ONLY	
DESIGN SERVICES UNIT PHONE: (919)250-4128 FAX: (919)250-4119			



SRS-1
 PI Sta 32+71.98 Δs = 54°09'02" (LT) Gs = 5°36'34" L = 299.020 LT = 62.009 T = 153.584 ST = 210.009 R = 500.000 SE = 0.076

PROP. 5+5M-200MM PVC WATER PIPE, SDR 21, 1.38 MPA WP
PROP. 2-200MM 22 1/2° DI BENDS

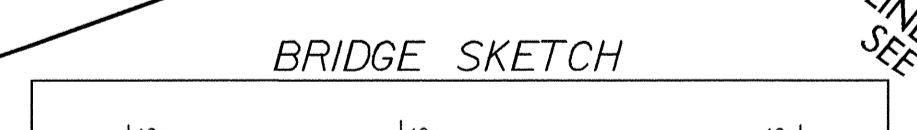
UTILITY CONSTRUCTION

SEE SHEET 36 & 37 FOR -L- PROFILE
 SEE SHEET 45 & 46 FOR -Y5- PROFILE
 SEE SHEET 49 & 50 FOR -RA- PROFILE
 SEE SHEET 49 FOR -M- PROFILE
 SEE SHEET 50 FOR -RB- PROFILE
 SEE SHEET 51 FOR -RC- PROFILE
 SEE SHEET 52 FOR -RD- PROFILE
 SEE SHEETS 2-C AND 2-D FOR CONST. DIMENSIONS FOR 15/RC/RO AND 15/RA/RB INTERSECTIONS
 SEE SHEET 2-F AND 2-G FOR SHEAR POINT LAYOUT
 SEE CROSS-SECTIONS AND ROADWAY STANDARD DRAWINGS, STD. NO. 885A, SHEET 2 FOR SPECIAL MEDIAN DRAWING

RC- PI Sta 11+92.680 Δs = 5°07'23" (RT) Gs = 6°32'59" (RT) L = 90.000 LT = 57.159 T = 28.611 ST = 30.023 R = 500.000 SE = 0.076 RUNOFF = 90m

Y5- PI Sta 11+97.71 Δs = 1°58'36" (RT) L = 191.862 T = 96.959 ST = 100.000 R = 500.000 SE = 0.076 RUNOFF = 50m

> SEE PLANS



JUDY R. SMITH
 DB 519 PG 637

RD- PI Sta 11+13.494 Δs = 47°31'56" (LT) Gs = 8°33'39" L = 189.328 LT = 79.263 T = 193.846 ST = 180.039 R = 180.000 SE = 0.080 RUNOFF = SEE PLANS

PLS Sta 12+10.597 Δs = 8°33'39" L = 63.000 LT = 36.043 T = 238.846 ST = 21.008 R = 500.000 SE = 0.076

PLS Sta 14+24.802 Δs = 3°38'34" L = 63.000 LT = 42.009 T = 74.362 R = 500.000 SE = 0.076

PI Sta 15+20.156 Δs = 16°55'01" (RT) L = 147.643 LT = 74.362 T = 174.362 R = 500.000 SE = 0.076

04/13/2004 07:48 R:\UC\11\res\11\UC-4\UC-4-513bb\11.dwg sgm\bbd 11 05/24/2005