

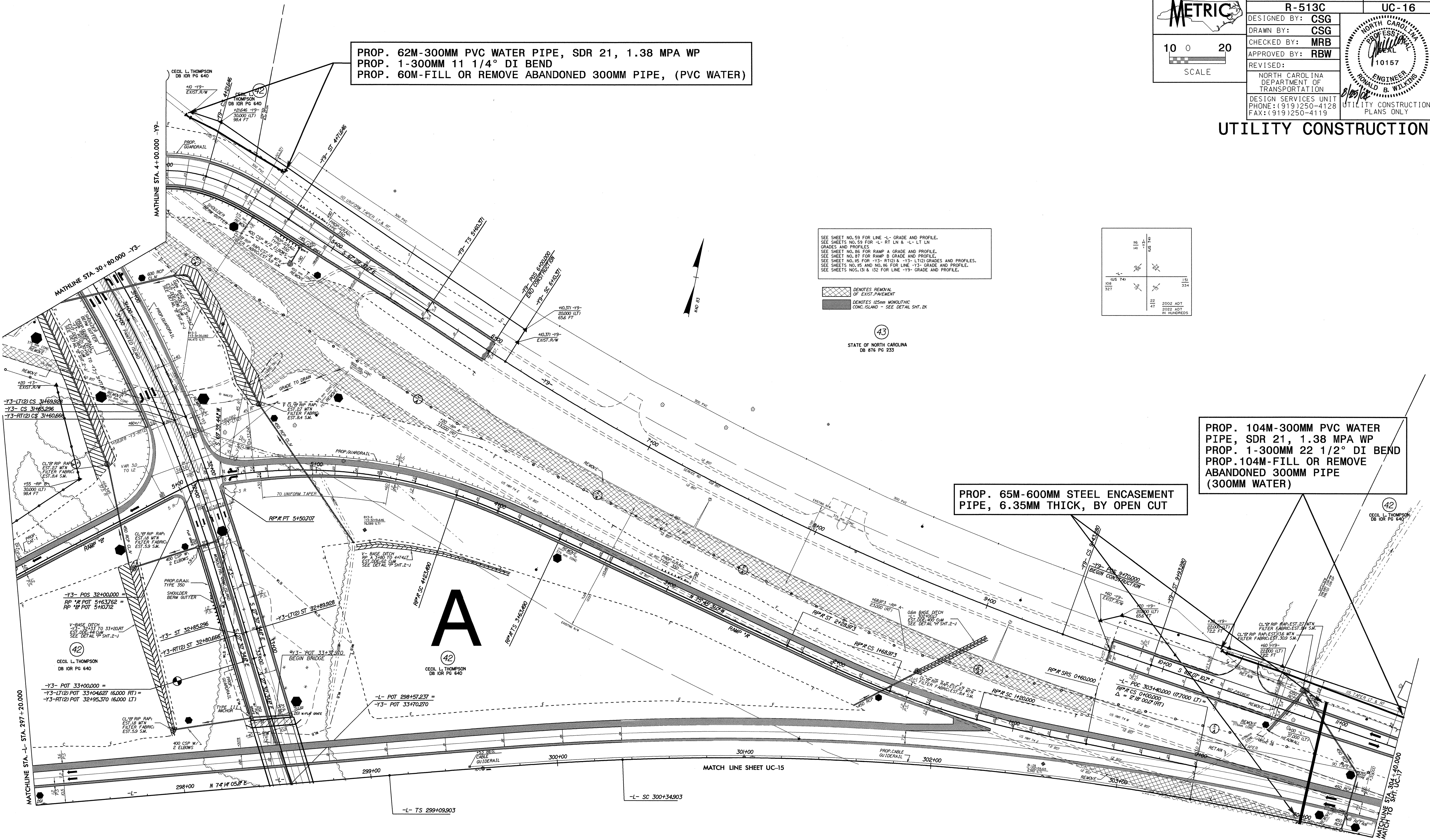
042457

METRIC	PROJECT REFERENCE NO.	SHEET NO.
	R-513C	UC-16
DESIGNED BY: CSG		
DRAWN BY: CSG		
CHECKED BY: MRB		
APPROVED BY: RBW		
REVISED:	NORTH CAROLINA DEPARTMENT OF TRANSPORTATION DESIGN SERVICES UNIT PHONE: (919) 250-4128 FAX: (919) 250-4119	
UTILITY CONSTRUCTION		

PROP. 62M-300MM PVC WATER PIPE, SDR 21, 1.38 MPA WP
 PROP. 1-300MM 11 1/4° DI BEND
 PROP. 60M-FILL OR REMOVE ABANDONED 300MM PIPE, (PVC WATER)

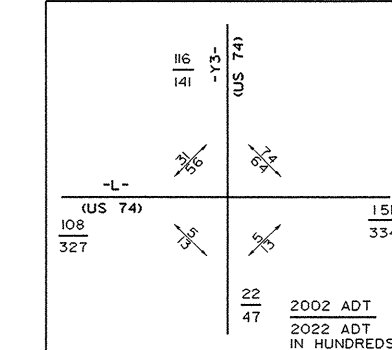
PROP. 104M-300MM PVC WATER PIPE, SDR 21, 1.38 MPA WP
 PROP. 1-300MM 22 1/2° DI BEND
 PROP. 104M-FILL OR REMOVE ABANDONED 300MM PIPE (300MM WATER)

PROP. 65M-600MM STEEL ENCASEMENT PIPE, 6.35MM THICK, BY OPEN CUT



SEE SHEET NO. 59 FOR LINE -L- GRADE AND PROFILE.
 SEE SHEETS NO. 59 FOR -L- RT LN & -L- LT LN GRADES AND PROFILES.
 SEE SHEET NO. 89 FOR RAMP A GRADE AND PROFILE.
 SEE SHEET NO. 91 FOR RAMP B GRADE AND PROFILE.
 SEE SHEET NO. 95 FOR -Y3- RT(2) & -Y3- LT(2) GRADES AND PROFILES.
 SEE SHEETS NO. 95 AND NO. 96 FOR LINE -Y3- GRADE AND PROFILE.
 SEE SHEETS NOS. 131 & 132 FOR LINE -Y9- GRADE AND PROFILE.

DENOTES REMOVAL OF EXIST. PAVEMENT
 DENOTES 125mm MONOLITHIC CONC. ISLAND - SEE DETAIL SHY. 2K



43
 STATE OF NORTH CAROLINA
 DB 876 PG 233

25-AUG-2004 08:47
 R:\UC16R513C18\15H
 UC16R513C18.DWG
 15H