

PROJECT REFERENCE NO. **R-513C** SHEET NO. **UC-17**

DESIGNED BY: **CSG**

DRAWN BY: **CSG**

CHECKED BY: **MRB**

APPROVED BY: **RBW**

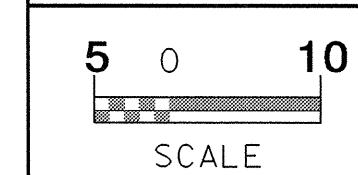
REVISER:

NORTH CAROLINA DEPARTMENT OF TRANSPORTATION

ENGINEER: **RONALD S. WILKIE**

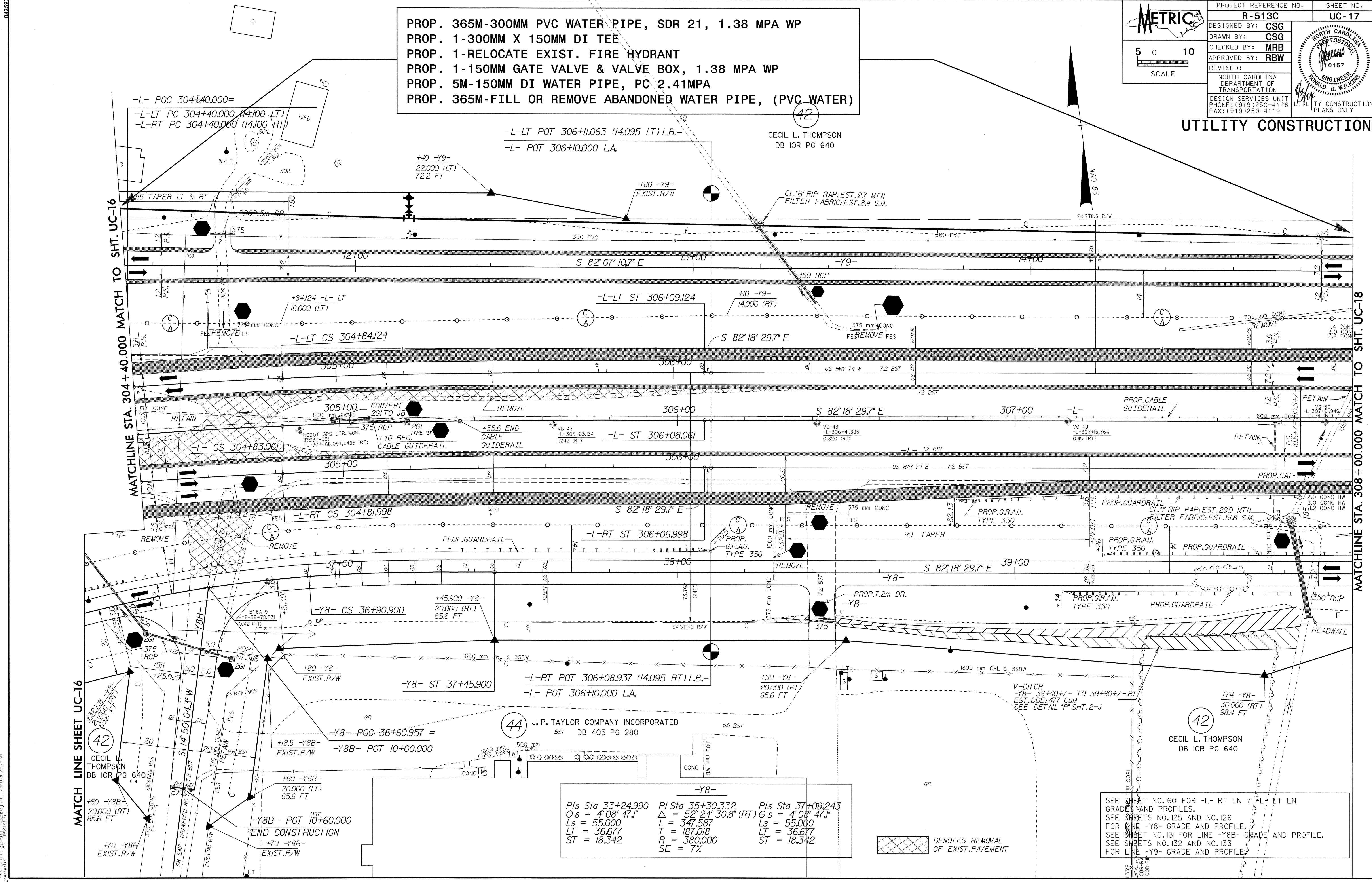
DESIGN SERVICES UNIT  
PHONE: (919) 250-4128  
FAX: (919) 250-4119

UTILITY CONSTRUCTION PLANS ONLY



PROP. 365M-300MM PVC WATER PIPE, SDR 21, 1.38 MPA WP  
 PROP. 1-300MM X 150MM DI TEE  
 PROP. 1-RELOCATE EXIST. FIRE HYDRANT  
 PROP. 1-150MM GATE VALVE & VALVE BOX, 1.38 MPA WP  
 PROP. 5M-150MM DI WATER PIPE, PC 2.41MPA  
 PROP. 365M-FILL OR REMOVE ABANDONED WATER PIPE, (PVC WATER)

UTILITY CONSTRUCTION



Pls Sta 33+24990  $\Delta s = 4'08''47.1''$   
 $Ls = 55.000$   
 $LT = 36.677$   
 $ST = 18.342$

Pls Sta 35+30.332  $\Delta = 52'24''30.8'' (RT)$   
 $L = 347.587$   
 $T = 187.018$   
 $R = 380.000$   
 $SE = 7\%$

Pls Sta 37+09.243  $\Delta s = 4'08''47.1''$   
 $Ls = 55.000$   
 $LT = 36.677$   
 $ST = 18.342$

DENOTES REMOVAL OF EXIST. PAVEMENT

SEE SHEET NO. 60 FOR -L- RT LN 7 -L- LT LN GRADES AND PROFILES.  
 SEE SHEETS NO. 125 AND NO. 126 FOR LINE -Y8- GRADE AND PROFILE.  
 SEE SHEET NO. 131 FOR LINE -Y8B- GRADE AND PROFILE.  
 SEE SHEETS NO. 132 AND NO. 133 FOR LINE -Y9- GRADE AND PROFILE.

04-AUG-2004 15:35  
 R:\Projects\17R513C\UC17R513C20.PSH  
 sgm\bbid - At 10:52:48:56