

042457

METRIC

PROJECT REFERENCE NO. **R-513C** SHEET NO. **UC-19**

DESIGNED BY: **CSG**

DRAWN BY: **CSG**

CHECKED BY: **MRB**

APPROVED BY: **RBW**

REVISED:

NORTH CAROLINA PROFESSIONAL ENGINEERS & SURVEYORS
10157
WALD E. WILKIE

NORTH CAROLINA DEPARTMENT OF TRANSPORTATION

DESIGN SERVICES UNIT
PHONE: (919) 250-4128
FAX: (919) 250-4119

UTILITY CONSTRUCTION PLANS ONLY

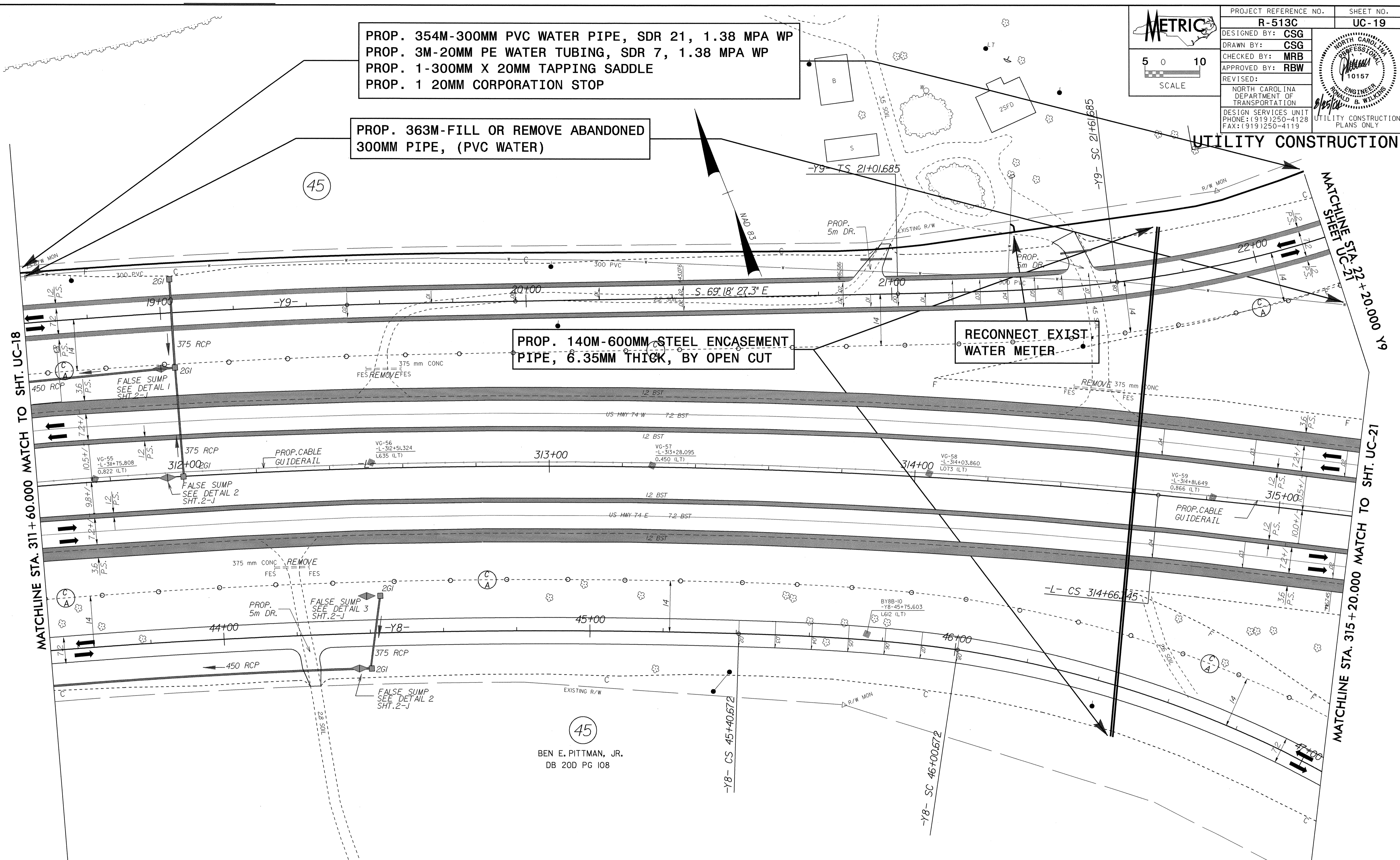
SCALE: 5 0 10

PROP. 354M-300MM PVC WATER PIPE, SDR 21, 1.38 MPA WP
 PROP. 3M-20MM PE WATER TUBING, SDR 7, 1.38 MPA WP
 PROP. 1-300MM X 20MM TAPPING SADDLE
 PROP. 1 20MM CORPORATION STOP

PROP. 363M-FILL OR REMOVE ABANDONED 300MM PIPE, (PVC WATER)

PROP. 140M-600MM STEEL ENCASEMENT PIPE, 6.35MM THICK, BY OPEN CUT

RECONNECT EXIST. WATER METER



BEN E. PITTMAN, JR.
DB 20D PG 108

<p>-Y8-</p> <p>Pls Sta 40+86.528 PI Sta 43+31.133 $\Theta s = 1^{\circ} 39' 47.7''$ $\Delta = 14' 11'' 50.8''$ (RT) $Ls = 98.700$ $L = 421.247$ $LT = 65.803$ $T = 211.708$ $ST = 32.903$ $R = 1,700.001$ $SE = 2\%$</p>		<p>-Y8-</p> <p>Pls Sta 45+77.705 PI Sta 46+84.050 $\Theta s = 6^{\circ} 44' 26.4''$ $\Delta = 31^{\circ} 03' 50.8''$ (RT) $Ls = 60.000$ $L = 162.651$ $R1 = 1,700.000$ $T = 83.378$ $R2 = 300.000$ $R = 300.000$ $LT = 37.033$ $ST = 23.030$ $SE = 8\%$</p>		<p>-L-</p> <p>Pls Sta 47+83.343 PI Sta 311+95.668 $\Theta s = 5^{\circ} 43' 46.5''$ $\Delta = 17^{\circ} 56' 58.2''$ (RT) $Ls = 60.000$ $L = 546.670$ $LT = 66.670$ $T = 275.593$ $ST = 33.336$ $R = 1,745.000$ $SE = 4\%$</p>		<p>-L-</p> <p>Pls Sta 315+00.081 PI Sta 315+00.081 $\Theta s = 1^{\circ} 38' 30.2''$ $\Delta = 17^{\circ} 56' 58.2''$ (RT) $Ls = 100.000$ $L = 66.670$ $LT = 66.670$ $T = 66.670$ $ST = 33.336$ $R = 1,745.000$ $SE = 4\%$</p>	
--	--	--	--	--	--	--	--

SEE SHEET NO. 62 FOR -L- RT LN & -L- LT LN GRADES AND PROFILES.
 SEE SHEETS NO. 126 AND NO. 127 FOR LINE -Y8- GRADE AND PROFILE.
 SEE SHEET NO. 133 AND 134 FOR LINE -Y9- GRADE AND PROFILE.

25-AUG-2004 08:37
 R:\UTL\1955\1955\UC19R513C22.PSH
 ag000018 RA 10/21/05