

PROJECT REFERENCE NO. **R-513C** SHEET NO. **UC-20**

DESIGNED BY: **CSG**

DRAWN BY: **CSG**

CHECKED BY: **MRB**

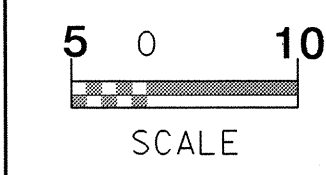
APPROVED BY: **RBW**

REVISED:

NORTH CAROLINA DEPARTMENT OF TRANSPORTATION

DESIGN SERVICES UNIT  
PHONE: (919) 250-4128  
FAX: (919) 250-4119

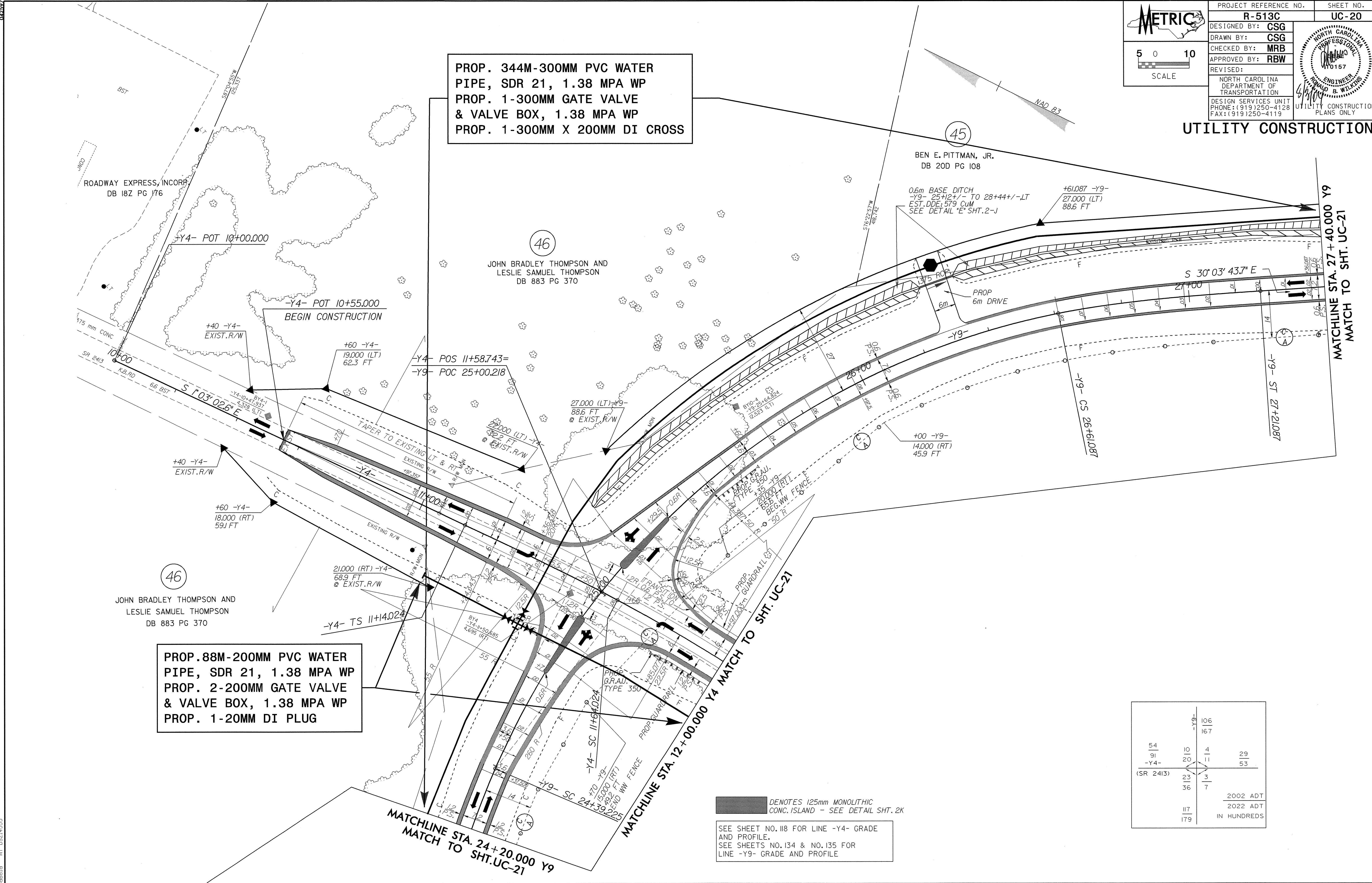
UTILITY CONSTRUCTION PLANS ONLY



**UTILITY CONSTRUCTION**

**PROP. 344M-300MM PVC WATER PIPE, SDR 21, 1.38 MPA WP  
PROP. 1-300MM GATE VALVE & VALVE BOX, 1.38 MPA WP  
PROP. 1-300MM X 200MM DI CROSS**

**PROP. 88M-200MM PVC WATER PIPE, SDR 21, 1.38 MPA WP  
PROP. 2-200MM GATE VALVE & VALVE BOX, 1.38 MPA WP  
PROP. 1-20MM DI PLUG**



		-Y9-	106	
			16.7	
54	10	4	29	
91	20	11	53	
(SR 2413)	23	3		
	36	7		
	117			2002 ADT
	179			2022 ADT
				IN HUNDREDS

DENOTES 125mm MONOLITHIC CONC. ISLAND - SEE DETAIL SHT. 2K

SEE SHEET NO. 118 FOR LINE -Y4- GRADE AND PROFILE.  
SEE SHEETS NO. 134 & NO. 135 FOR LINE -Y9- GRADE AND PROFILE.

6/28/04 JHL-2004 09:53 P:\UC20R513C50.FSH  
 spocbld 01/02/2004 10:22:45